



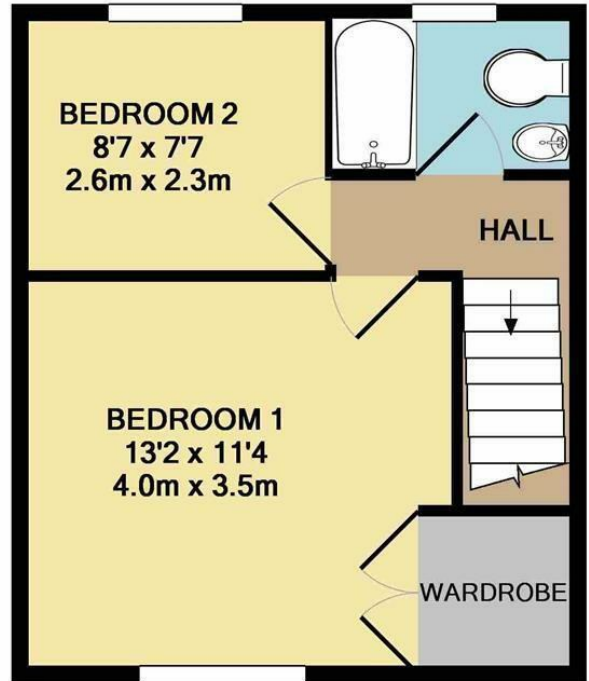
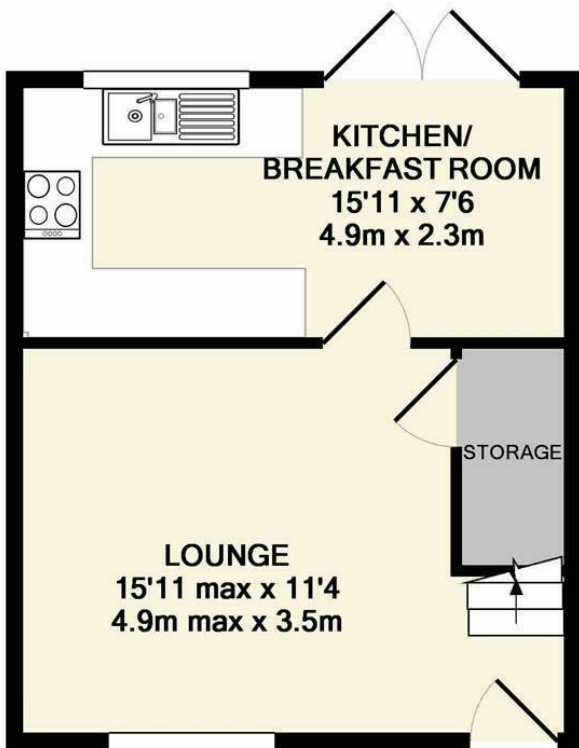
Holmsey Green, Beck Row, Suffolk, IP28 8AP
Rent - £1,125 PCM Deposit - £1,298

A modern 2 bedroom mid terraced house, located in the village of Beck Row close to both USAF bases. Kitchen/ breakfast room with integrated oven & dishwasher. Master bedroom with built in closets and stylish bathroom, Garden with shed & parking.

- MODERN TERRACED HOUSE
- 2 GOOD SIZED BEDROOMS
- KITCHEN/BREAKFAST ROOM
- FAMILY BATHROOM
- ENCLOSED GARDEN & ALLOCATED PARKING
- CLOSE TO RAF BASES
- ELECTRIC HEATING & ENERGY RATING - B
- APPROXIMATE SIZE - 600 SQ FT
- PETS CONSIDERED/ COUNCIL TAX BAND - A
- AVAILABLE FROM MID MAY



Council Tax Band: A - EPC Rating: B 82



GROUND FLOOR
APPROX. FLOOR
AREA 300 SQ.FT.
(27.9 SQ.M.)

1ST FLOOR
APPROX. FLOOR
AREA 300 SQ.FT.
(27.9 SQ.M.)

TOTAL APPROX. FLOOR AREA 600 SQ.FT. (55.8 SQ.M.)

Whilst every attempt has been made to ensure the accuracy of the floor plan contained here, measurements of doors, windows, rooms and any other items are approximate and no responsibility is taken for any error, omission, or mis-statement. This plan is for illustrative purposes only and should be used as such by any prospective purchaser. The services, systems and appliances shown have not been tested and no guarantee as to their operability or efficiency can be given
Made with Metropix ©2018

