



Oak Street, Feltwell, Norfolk, IP26 4DD

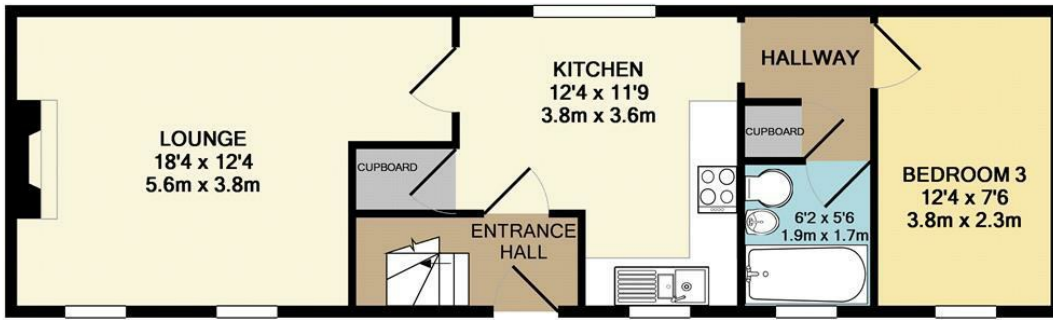
Rent - £1,125 PCM Deposit - £1,298

A charming cottage situated in an often requested village location. The property offers three bedrooms, lounge, kitchen/breakfast room and two bathrooms. Outside there is off street parking for one car and low maintenance courtyard garden.

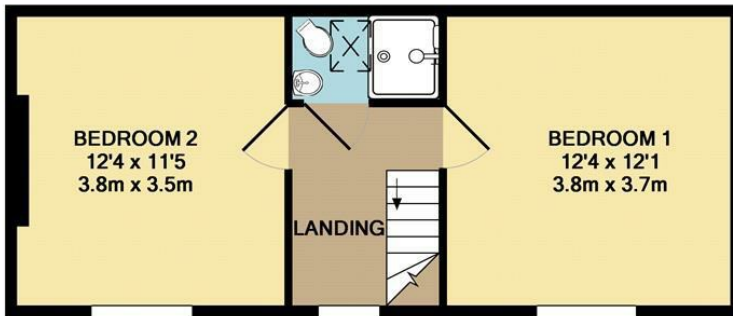
- COTTAGE
- 3 BEDROOMS
- KITCHEN / DINER
- FAMILY BATHROOM & SHOWER ROOM
- COURTYARD & PARKING
- OFTEN REQUESTED VILLAGE LOCATION
- OIL HEATING & ENERGY RATING - E
- APPROXIMATE SIZE - 898 SQ FT
- PETS CONSIDERED / COUNCIL TAX BAND - C
- AVAILABLE IMMEDIATELY



Council Tax Band: C - EPC Rating: E 46



GROUND FLOOR
 APPROX. FLOOR
 AREA 532 SQ.FT.
 (49.5 SQ.M.)



1ST FLOOR
 APPROX. FLOOR
 AREA 365 SQ.FT.
 (33.9 SQ.M.)

TOTAL APPROX. FLOOR AREA 898 SQ.FT. (83.4 SQ.M.)

Whilst every attempt has been made to ensure the accuracy of the floor plan contained here, measurements of doors, windows, rooms and any other items are approximate and no responsibility is taken for any error, omission, or mis-statement. This plan is for illustrative purposes only and should be used as such by any prospective purchaser. The services, systems and appliances shown have not been tested and no guarantee as to their operability or efficiency can be given.

Made with Metropix ©2013

