



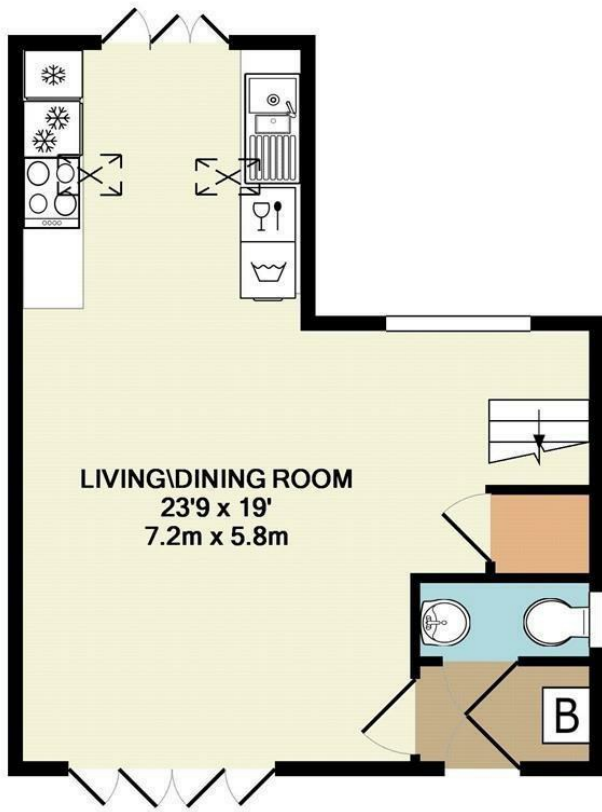
Sun Street, Isleham, Cambs, CB7 5RU

Rent - £1,200 PCM Deposit - £1,384

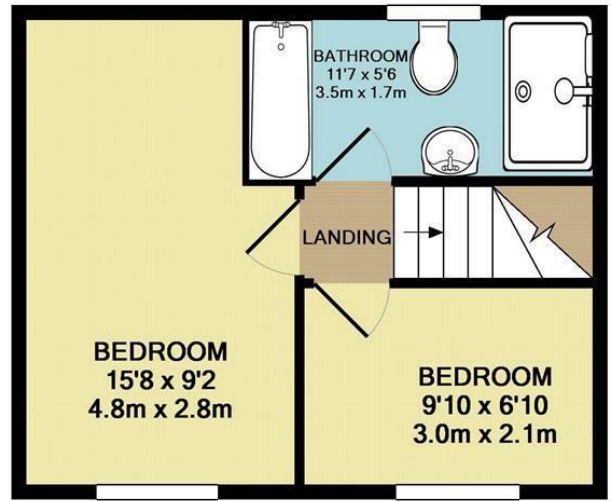
This 2 bedroom detached house is just 10 minutes from RAF Mildenhall. The property offers a living/dining room, modern kitchen, 2 bedrooms & 1.5 bathrooms. Parking & courtyard.

- DETACHED HOUSE
- 2 BEDROOMS
- OPEN PLAN KITCHEN/LOUNGE/DINER
- BATHROOM & CLOAKROOM
- SORRY NO PETS
- OFTEN REQUESTED VILLAGE LOCATION
- GAS HEATING & ENERGY RATING - TBC
- APPROXIMATE SIZE - 664 SQ FT
- PARKING & COURTYARD
- AVAILABLE MID APRIL





GROUND FLOOR
APPROX. FLOOR
AREA 365 SQ.FT.
(33.9 SQ.M.)



1ST FLOOR
APPROX. FLOOR
AREA 298 SQ.FT.
(27.7 SQ.M.)

TOTAL APPROX. FLOOR AREA 664 SQ.FT. (61.7 SQ.M.)

Whilst every attempt has been made to ensure the accuracy of the floor plan contained here, measurements of doors, windows, rooms and any other items are approximate and no responsibility is taken for any error, omission, or mis-statement. This plan is for illustrative purposes only and should be used as such by any prospective purchaser. The services, systems and appliances shown have not been tested and no guarantee as to their operability or efficiency can be given

Made with Metropix ©2012

