



Fincham Road, Mildenhall, Suffolk, IP28 7BU

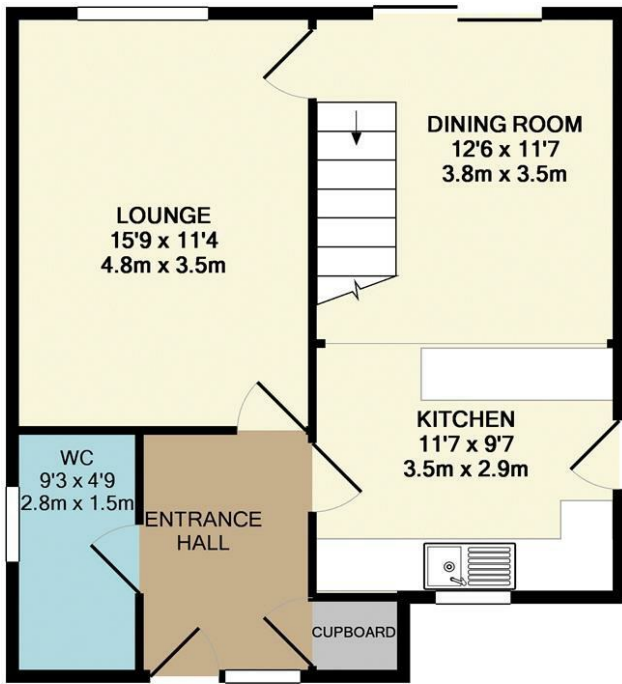
Rent - £1,330 PCM Deposit - £1,534

A spacious detached family home located on the popular Comet Way development close to RAF bases. There is a kitchen, large living room, separate dining room, 4 good size bedrooms & 2.5 bathrooms. A large enclosed garden to the rear of the property and a garage & parking.

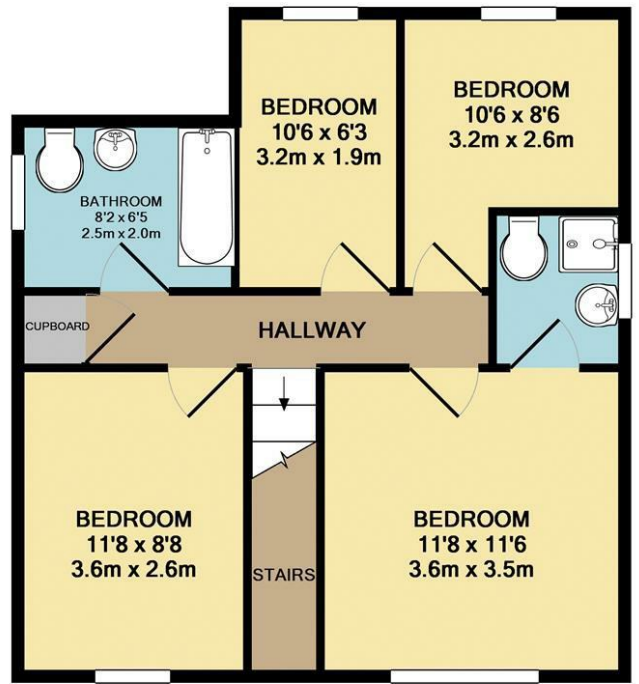
- SPACIOUS DETACHED HOUSE
- 4 BEDROOMS
- SEPARATE DINING ROOM
- FAMILY BATHROOM, EN - SUITE & CLOAKROOM
- LARGE GARDEN, GARAGE & PARKING
- POPULAR DEVELOPMENT CLOSE TO BOTH RAF BASES
- GAS HEATING & ENERGY RATING - C
- APPROXIMATE SIZE - 1089 SQ FT
- PETS CONSIDERED
- AVAILABLE END OF APRIL



Council Tax Band: D - EPC Rating: C 71



GROUND FLOOR
APPROX. FLOOR
AREA 549 SQ.FT.
(51.0 SQ.M.)



1ST FLOOR
APPROX. FLOOR
AREA 540 SQ.FT.
(50.2 SQ.M.)

TOTAL APPROX. FLOOR AREA 1089 SQ.FT. (101.2 SQ.M.)

Whilst every attempt has been made to ensure the accuracy of the floor plan contained here, measurements of doors, windows, rooms and any other items are approximate and no responsibility is taken for any error, omission, or mis-statement. This plan is for illustrative purposes only and should be used as such by any prospective purchaser. The services, systems and appliances shown have not been tested and no guarantee as to their operability or efficiency can be given
Made with Metropix ©2019

