



Bury Road, Brandon, Suffolk, IP27 0BT

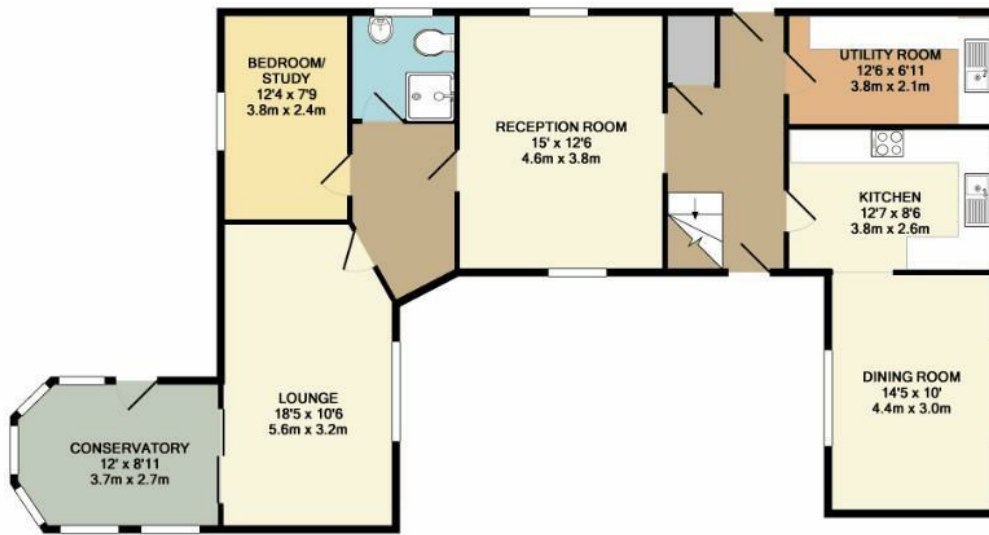
Rent - £2,250 PCM Deposit - £2,596

A spacious detached family home offering four bedrooms, four reception rooms, two bathrooms, kitchen and utility room. Outside there is a double garage, ample off road parking and enclosed gardens.

- SPACIOUS DETACHED FAMILY HOME
- 4 GOOD SIZE BEDROOMS
- UTILITY ROOM
- FAMILY BATHROOM & SHOWER ROOM
- AMPLE PARKING, DOUBLE GARAGE & LARGE GARDEN
- CONSERVATORY
- GAS HEATING & ENERGY RATING - E
- APPROXIMATE SIZE - 1772 SQ FT
- PETS CONSIDERED
- AVAILABLE FOR VIEWINGS



Council Tax Band: - EPC Rating: E 54



GROUND FLOOR
APPROX. FLOOR
AREA 1141 SQ.FT.
(106.0 SQ.M.)



1ST FLOOR
APPROX. FLOOR
AREA 631 SQ.FT.
(58.6 SQ.M.)

TOTAL APPROX. FLOOR AREA 1772 SQ.FT. (164.6 SQ.M.)

Whilst every attempt has been made to ensure the accuracy of the floor plan contained here, measurements of doors, windows, rooms and any other items are approximate and no responsibility is taken for any error, omission, or mis-statement. This plan is for illustrative purposes only and should be used as such by any prospective purchaser. The services, systems and appliances shown have not been tested and no guarantee as to their operability or efficiency can be given.

Made with Metropix ©2018

