



Armstrong Close, Newmarket, Suffolk, CB8 8HD

Rent - £1,500 PCM Deposit - £1,730

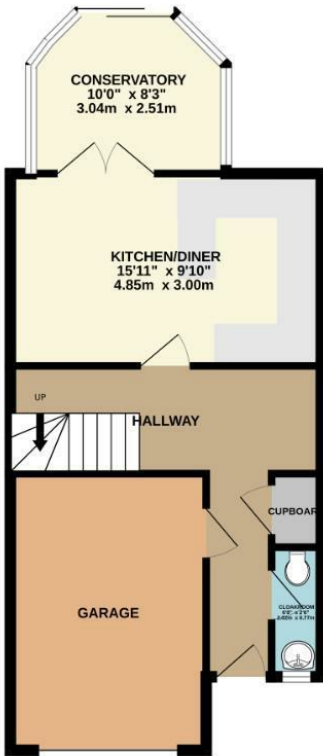
A well presented and spacious three bedroom town house, situated in a popular yet quiet residential area just a five minute walk from Newmarket Town Centre. The property offers diverse accommodation spread over three floors and in brief, comprises three generous double bedrooms, living room, kitchen/breakfast room, conservatory, family bathroom, cloakroom and entrance hall. External benefits include a private enclosed garden to the rear and a driveway which in turn provides parking for two vehicles and leads to a single garage. Further on street parking is available.

- THREE STOREY TOWN HOUSE
- THREE SPACIOUS BEDROOMS
- FIVE MINUTE WALK TO TOWN CENTRE
- AVAILABLE END OF MARCH 2024
- GAS CENTRAL HEATING
- OFF-ROAD PARKING & GARAGE
- TWO RECEPTION ROOMS
- PRIVATE ENCLOSED GARDEN
- INTEGRATED APPLIANCES
- PETS CONSIDERED

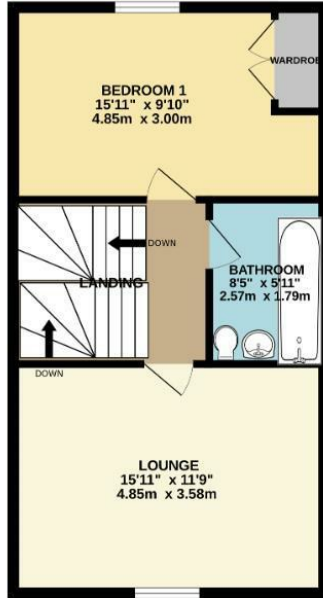


Council Tax Band: D - EPC Rating: C 72

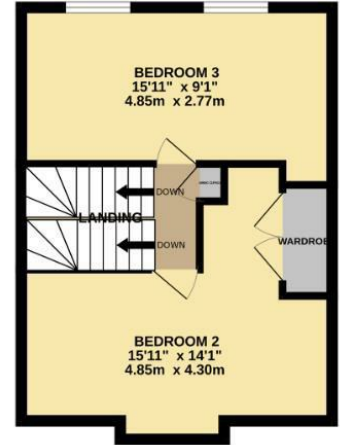
GROUND FLOOR
524 sq.ft. (48.7 sq.m.) approx.



1ST FLOOR
478 sq.ft. (44.4 sq.m.) approx.



2ND FLOOR
342 sq.ft. (31.8 sq.m.) approx.



TOTAL FLOOR AREA : 1344 sq.ft. (124.8 sq.m.) approx.

Whilst every attempt has been made to ensure the accuracy of the floorplan contained here, measurements of doors, windows, rooms and any other items are approximate and no responsibility is taken for any error, omission or mis-statement. This plan is for illustrative purposes only and should be used as such by any prospective purchaser. The services, systems and appliances shown have not been tested and no guarantee as to their operability or efficiency can be given.
Made with Metropix ©2024

