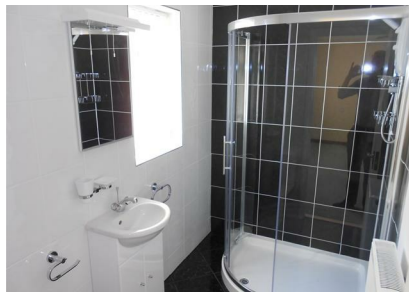


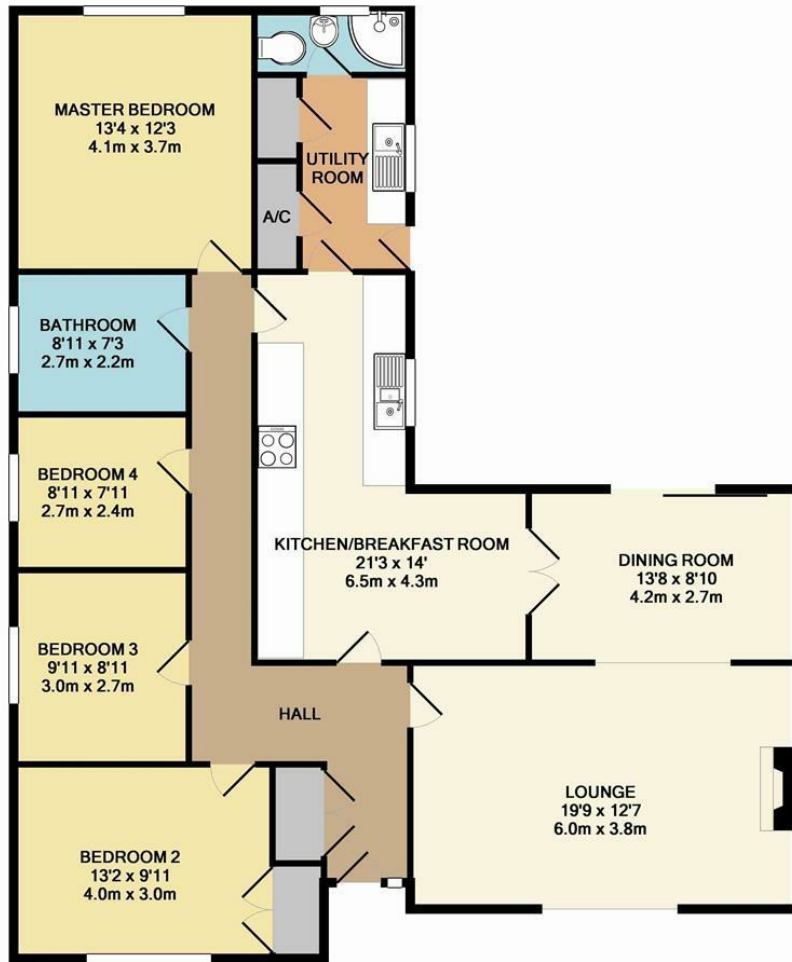


Drift Road, Lakenheath, Suffolk, IP27 9JL
Rent - £1,665 PCM Deposit - £1,921

- DETACHED BUNGALOW
- 4 BEDROOMS
- DINING ROOM
- FAMILY BATHROOM & SHOWER ROOM
- AMPLE PARKING, GARAGE & ENCLOSED GARDEN
- CLOSE TO RAF BASES
- OIL HEATING & ENERGY RATING - E
- APPROXIMATE SIZE -1383 SQ FT
- PETS CONSIDERED
- AVAILABLE NOW



Energy Efficiency Rating		Current	Potential	Environmental Impact (CO ₂) Rating	
100 energy efficient - lower running costs				100 environmentally friendly - lower CO ₂ emissions	
81-91	A			81-91	A
69-80	B			69-80	B
55-68	C			55-68	C
39-54	D			39-54	D
29-38	E			29-38	E
13-28	F			13-28	F
1-12	G			1-12	G
100 energy efficient - higher running costs				100 environmentally friendly - higher CO ₂ emissions	
England & Wales		EU Directive 2002/91/EC	78	England & Wales	



TOTAL APPROX. FLOOR AREA 1383 SQ.FT. (128.5 SQ.M.)

Whilst every attempt has been made to ensure the accuracy of the floor plan contained here, measurements of doors, windows, rooms and any other items are approximate and no responsibility is taken for any error, omission, or mis-statement. This plan is for illustrative purposes only and should be used as such by any prospective purchaser. The services, systems and appliances shown have not been tested and no guarantee as to their operability or efficiency can be given
 Made with Metropix ©2013

