



# Falcon

01752 600444

## 316 Bodmin Road

Whitleigh, Plymouth, PL5 4AX

Guide Price £210,000 - £220,000







## In Brief

### Mid terraced Family home

**Reception Rooms** 2 receptions

**Bedrooms** 3 Bedrooms

**Heating** Gas central heating

**Tenure** Freehold

**Parking** On street parking

**Council Tax** A

## Description

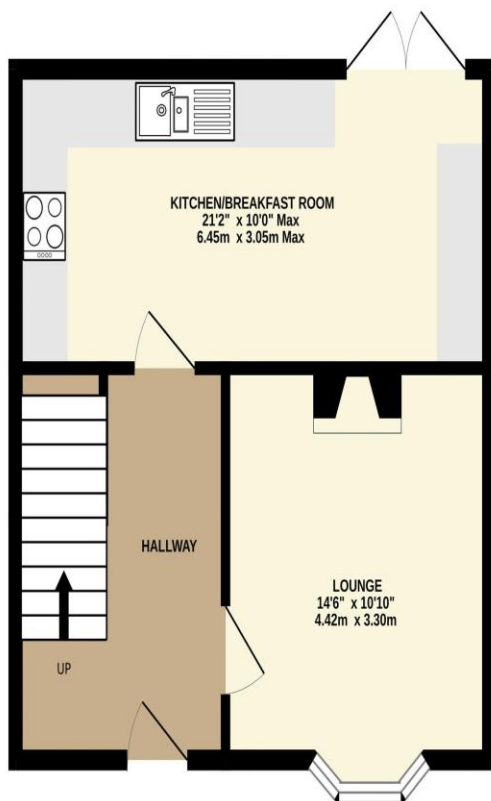
Situated in the sought-after Whitleigh location, this spacious Mid-terrace ex-local authority home offers well-proportioned accommodation and excellent access to local amenities. The property is conveniently positioned close to schools, shops, and transport links, with easy access to the A38 and the hospital to the north of the city. The home has remained within the same family for over 50 years and has benefited from recent upgrades, including a newly fitted kitchen and a modern boiler, solar panels enhancing both comfort and efficiency. The ground floor comprises a welcoming living room and a generous kitchen/dining room, providing an ideal space for family living and entertaining. To the rear, the property enjoys a substantial approximately 60ft garden ideal for families and garden enthusiasts. On the first floor, the accommodation includes three bedrooms, a separate WC, and a family bathroom. Offered to the market with no onward chain, this property presents an excellent opportunity for a wide range of buyers.

**Need A Mortgage?**

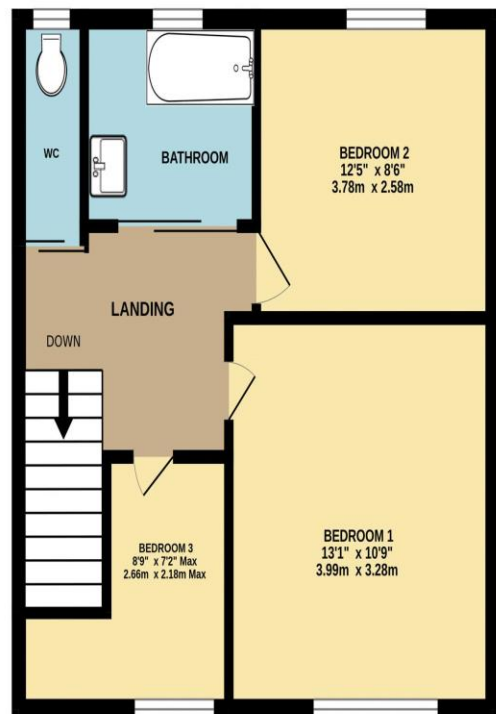
**Don't pay more than you need to for your mortgage advice:  
ours is only £195 paid when you move!**

# Floor Plans

GROUND FLOOR



1ST FLOOR



Made with Metropix ©2025



Fixed Price Conveyancing

A complete solution from just £600 with No sale – No Fee





We have not tested any apparatus, equipment, fixtures and fittings or services and so cannot verify that they are connected, in working order or fit for the purpose. Neither have we had sight of the legal documents to verify the Freehold or Leasehold status of any property; or sight of any consents, including Planning Permissions, building Regulations and Breaches of Covenants that may be required for alterations to the property. A buyer is advised to obtain verification from their Solicitor and/or Surveyor. Items shown in photographs are NOT included unless specifically mentioned within the Sales Particulars. Any floor plans on these details are not drawn to scale and are intended for guidance only

Falcon Property is an Introducer to Bradleys Financial Management Ltd. They are appointed representatives of Sesame Ltd who are authorised and regulated by the Financial Services Authority. Bradleys do not charge for mortgage advice, however a fee paying option is available. Typical fee is £195. Bradleys Financial Management: 16 Mannamead Road, Mutley, Plymouth, PL4 7AA

**Your home may be repossessed if you do not keep up repayments on your mortgage.**

