



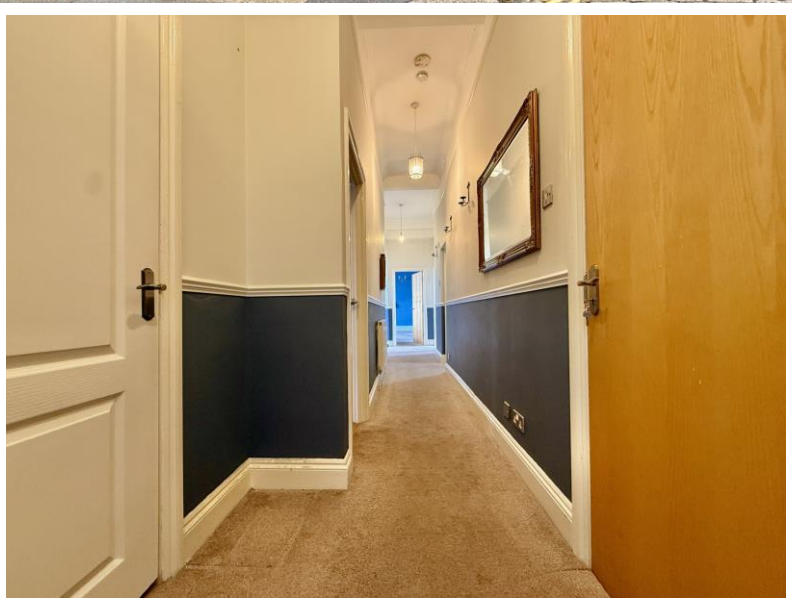
Falcon

01752 600444

Apartment 1 Springfield Villas

Milehouse Road, Plymouth, PL3 4AF

Guide Price £190,000-£200,000



In Brief

Spacious & Stylish Three-Bedroom Apartment in Period Building – Stoke Village

Reception Rooms	Large living room / dining room		
Bedrooms	3 Large double bedrooms one with ensuite		
Heating	Gas central heating	Parking	Secure allocated parking space. (electric gates)
Area	1164 sq ft	Council Tax	C
Tenure	Leasehold		

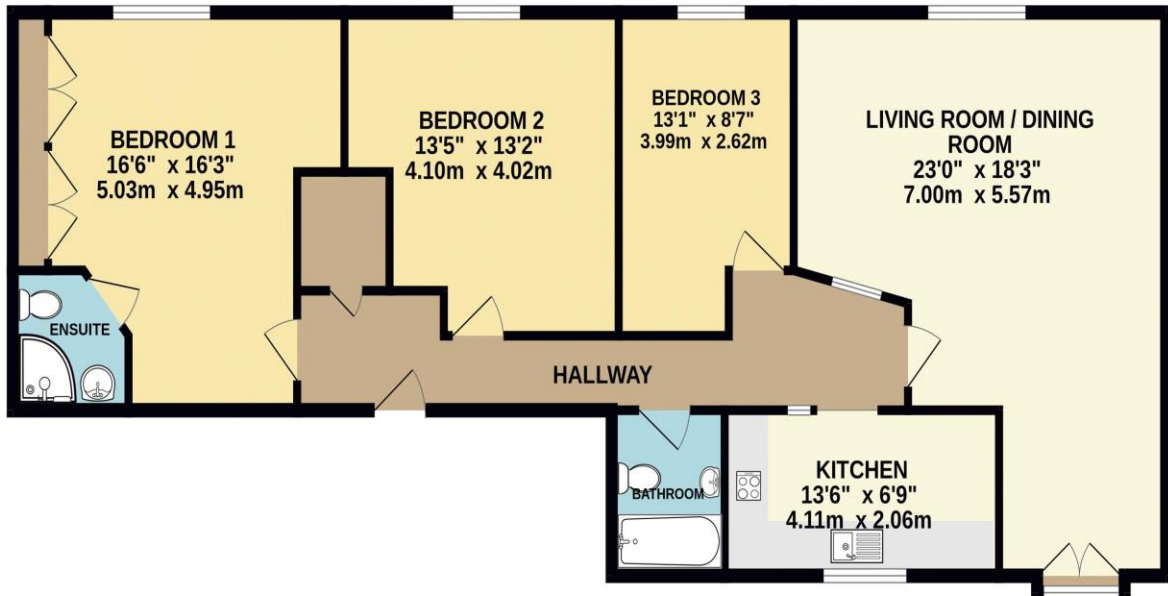
Description

Set within an elegant period detached building, this exceptional first-floor apartment offers generous living space and a blend of classic character with modern comfort — all just a short stroll from the heart of Stoke Village. Boasting three well-proportioned double bedrooms, the property includes a primary bedroom with an ensuite shower room, offering both privacy and convenience. The kitchen is smartly designed with contemporary fitted units and integrated appliances, including a washing machine, oven, and hob. The living/dining room is a standout feature — impressively spacious, with a step up to a raised dining area and double doors opening to a Juliet balcony, where you can enjoy pleasant open views to the rear. The main bathroom is sleek and modern, featuring a clean white suite. The apartment is further enhanced by gas central heating and uPVC double glazing throughout, ensuring comfort and energy efficiency. Converted to a high standard around 23 years ago, the building also offers secure gated parking to the rear with an allocated space and electrically operated gates — a real bonus in this sought-after location. Perfectly positioned, the property provides easy access to Central Park, the Life Centre, and Plymouth City Centre, making it ideal for professionals, families, or anyone seeking generous space in a convenient setting. This is a rare opportunity to secure a truly spacious and distinctive apartment — larger than many of its competitors, and packed with character and quality.

Need A Mortgage?

Don't pay more than you need to for your mortgage advice:
ours is only £195 paid when you move!

GROUND FLOOR 1104 sq.ft. (102.6 sq.m.) approx.



TOTAL FLOOR AREA : 1104 sq.ft. (102.6 sq.m.) approx.
Made with Metropix ©2025



We have not tested any apparatus, equipment, fixtures and fittings or services and so cannot verify that they are connected, in working order or fit for the purpose. Neither have we had sight of the legal documents to verify the Freehold or Leasehold status of any property; or sight of any consents, including Planning Permissions, building Regulations and Breaches of Covenants that may be required for alterations to the property. A buyer is advised to obtain verification from their Solicitor and/or Surveyor. Items shown in photographs are NOT included unless specifically mentioned within the Sales Particulars. Any floor plans on these details are not drawn to scale and are intended for guidance only

Falcon Property is an Introducer to Bradleys Financial Management Ltd. They are appointed representatives of Sesame Ltd who are authorised and regulated by the Financial Services Authority. Bradleys do not charge for mortgage advice, however a fee paying option is available. Typical fee is £195. Bradleys Financial Management: 16 Mannamead Road, Mutley, Plymouth, PL4 7AA

Your home may be repossessed if you do not keep up repayments on your mortgage.

Energy Efficiency Rating		
	Current	Potential
Very energy efficient - lower running costs		
(92+) A		
(81-91) B		
(69-80) C		
(55-68) D		
(39-54) E	49	57
(21-38) F		
(1-20) G		
Not energy efficient - higher running costs		
England & Wales		EU Directive 2002/91/EC
www.epc4u.com		

