



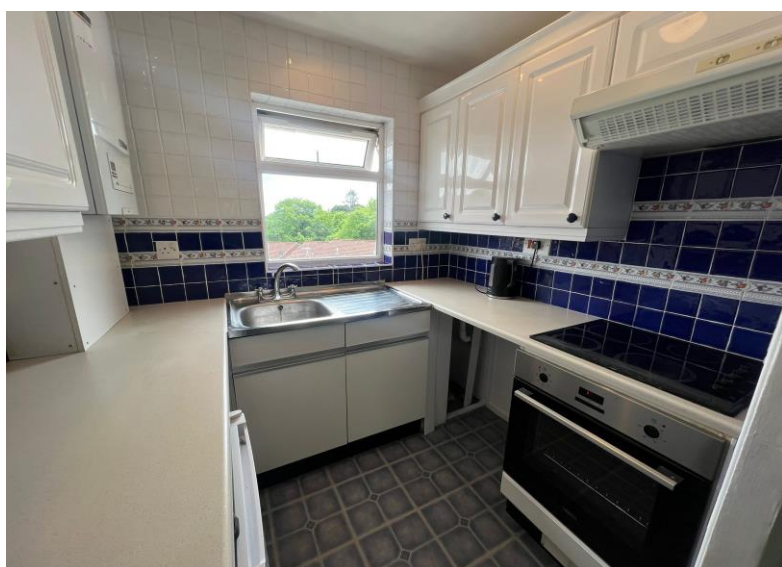
**Falcon**  
lettings

01752 600828

## **4 Highfield Close**

Efford, PLYMOUTH, PL3 6HW

£750 pcm



## In Brief

### A one bedroom top floor flat.

One large double bedroom.

Large sitting room

One allocated parking space

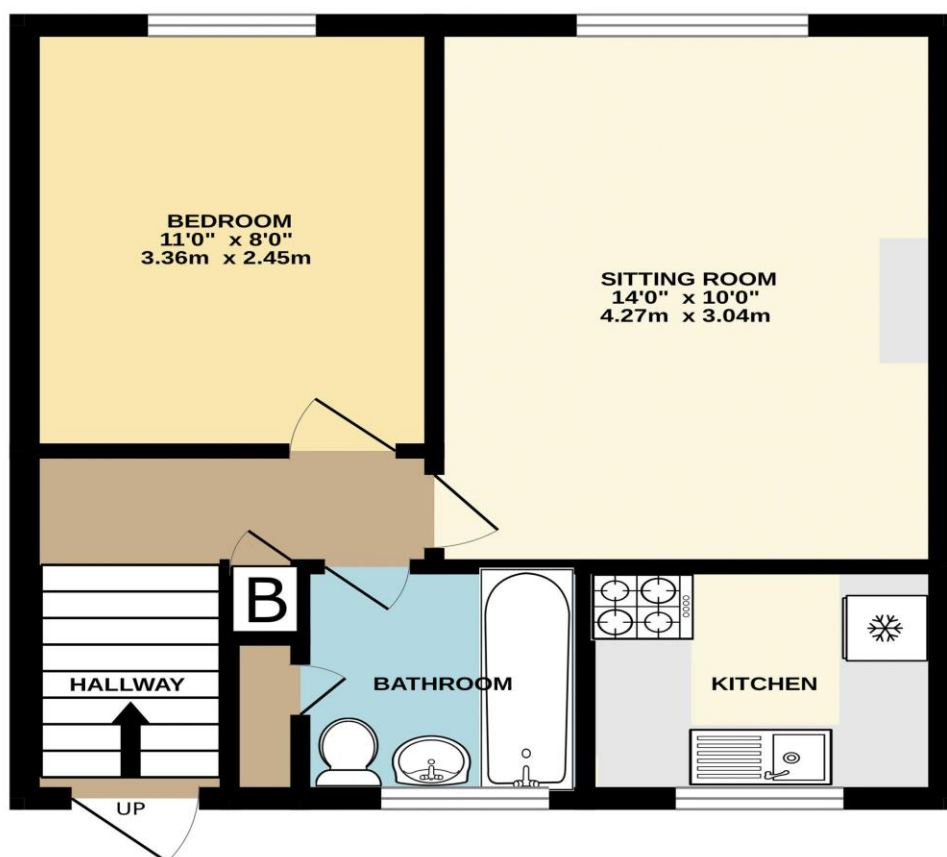
Lovely kitchen with a gifted fridge

Council tax A EPC D (Being renewed)

Holding deposit £173 Total deposit £865

This property will be Fully managed by Falcon Lettings

### GROUND FLOOR



Made with Metropix ©2025

[www.falconlettings.com](http://www.falconlettings.com)

8 Mannamead Road Mutley Plymouth PL4 7AA

Email: [lettings@falconproperty.com](mailto:lettings@falconproperty.com)

