



**Falcon**  
lettings

01752 600828

## **GF Maisonette**

16 Vaughan Close, Plymouth, PL2 3QP

£800 pcm



## In Brief

### One bedroom flat in Vaughan Close - Beacon Park - Close to Central Park

Large living room

One double bedroom

Allocated parking space in car park!

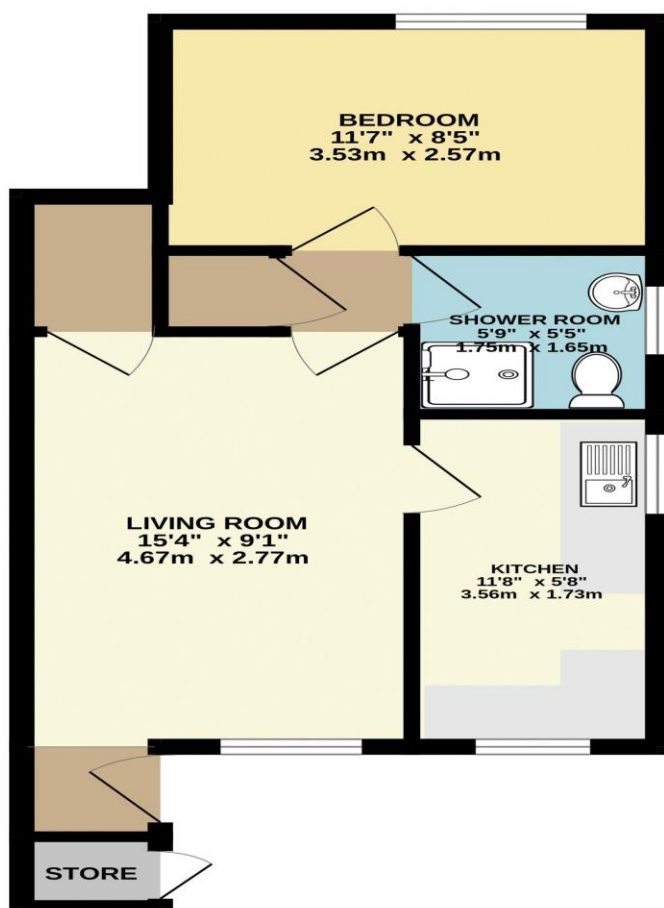
Electric storage heating

Council Tax Band - A EPC - D

Holding Deposit - £184 Total Deposit £923

This property will be Fully Managed by Falcon Lettings

GROUND FLOOR  
395 sq.ft. (36.7 sq.m.) approx.



TOTAL FLOOR AREA : 395 sq.ft. (36.7 sq.m.) approx.  
Made with Metropix ©2024

[www.falconlettings.com](http://www.falconlettings.com)

8 Mannamead Road Mutley Plymouth PL4 7AA

Email: [lettings@falconproperty.com](mailto:lettings@falconproperty.com)

