



Falcon
lettings

01752 600828

16 Castleton Close

Mannamead, Plymouth, PL3 5AE

£1,250 pcm



In Brief

Large three bedroom house - Mannamead

Lovely house in a great location

Two double bedrooms, one single bedroom

Family bathroom with bath & over-head shower

Large garden area

Shared driveway

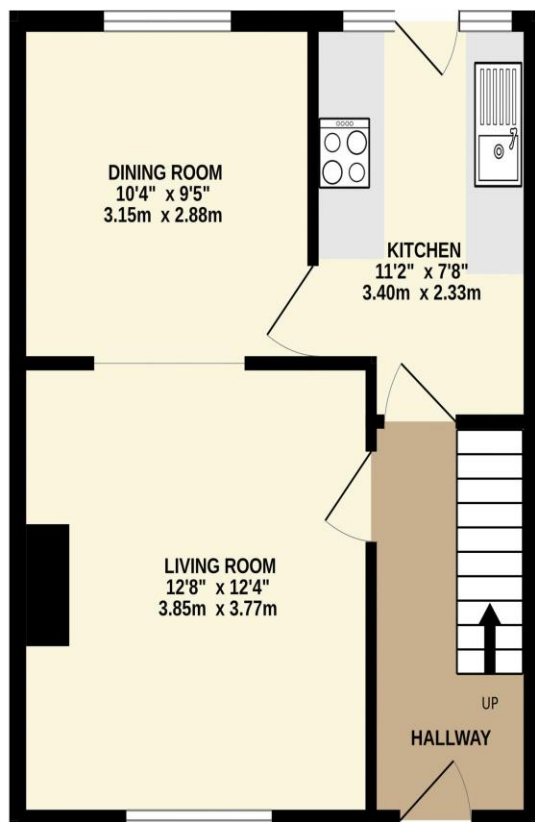
Cellar AND garage

Holding Deposit £288 Total Deposit £1,442

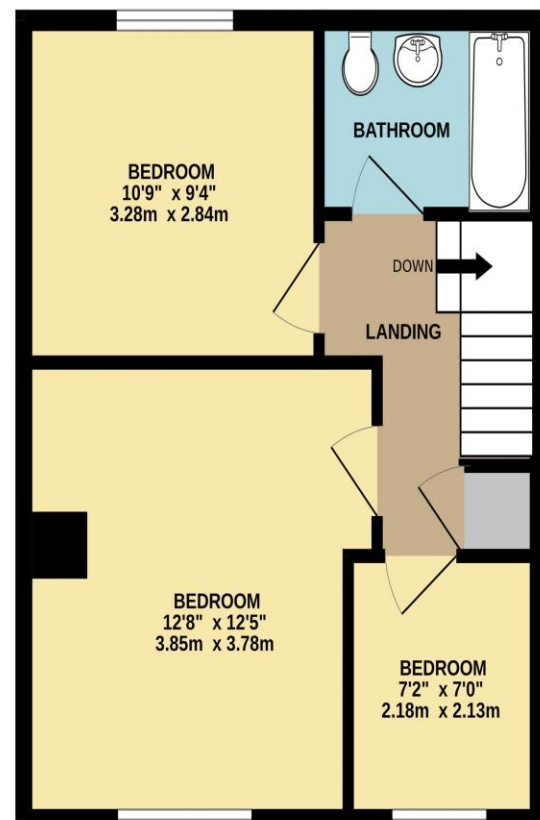
Council Tax Band - C - EPC - D

This property will be Part - Managed with the Landlord & Falcon Lettings

GROUND FLOOR
392 sq.ft. (36.5 sq.m.) approx.



1ST FLOOR
394 sq.ft. (36.6 sq.m.) approx.



TOTAL FLOOR AREA : 786 sq.ft. (73.1 sq.m.) approx.

Made with Metropix ©2023

www.falconlettings.com

8 Mannamead Road Mutley Plymouth PL4 7AA

Email: lettings@falconproperty.com

