



**Falcon**  
lettings

01752 600828

**Flat 3, 46**

Houndiscombe Road, Plymouth, PL4 6HE

Monthly Rental Of £1,100



## In Brief

Minutes walking distance of the University and City Centre.

Spacious penthouse apartment over two floors

Great main bedroom with vaulted ceiling and second single or study room

Open plan Living Room and kitchen

Bathroom with bath and separate shower

Private roof terrace

EPC E and Council Tax Band A

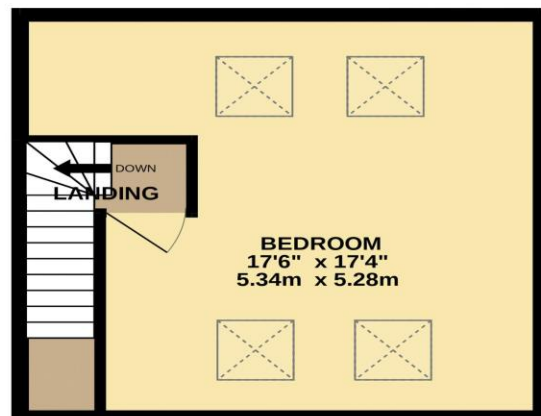
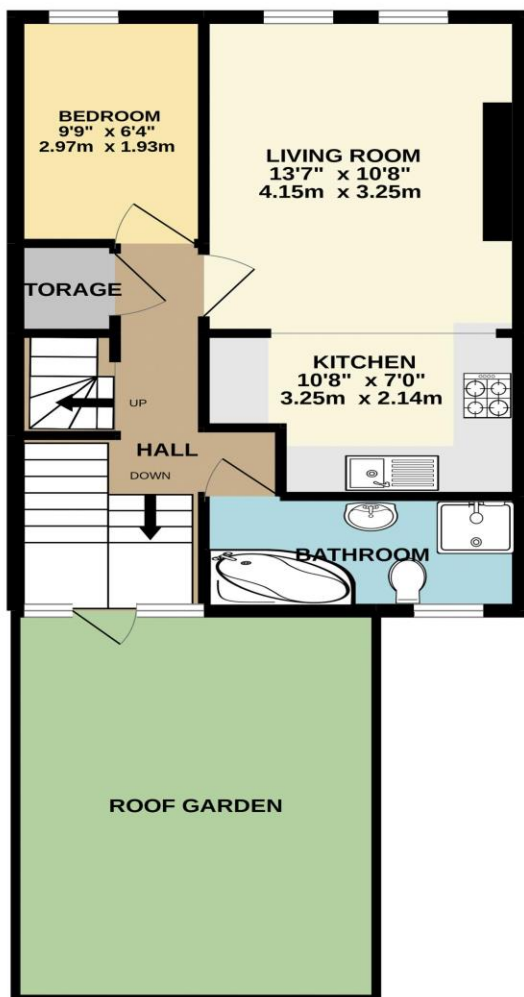
PLEASE NOTE: this property has no parking and is not eligible for a permit

NOT SUITABLE FOR PETS

Managed by Falcon Lettings

GROUND FLOOR  
428 sq.ft. (39.8 sq.m.) approx.

1ST FLOOR  
303 sq.ft. (28.2 sq.m.) approx.



TOTAL FLOOR AREA : 732 sq.ft. (68.0 sq.m.) approx.  
Made with Metropix ©2022

[www.falconlettings.com](http://www.falconlettings.com)

8 Mannamead Road Mutley Plymouth PL4 7AA

Email: [lettings@falconproperty.com](mailto:lettings@falconproperty.com)

