



Park East Building, Bow Quarter
London

£360,000

OLIVER *OJ* JAUQUES
EST. 1986

Flat 7 Park East Building

Bow Quarter, London

This exquisite one bedroom ground floor apartment has been meticulously renovated to a very high standard and has the benefit of direct access to the garden from the main reception. Located in the very popular and secure gated development of Bow Quarter (the former Bryant and May Matchstick factory site), this would be a perfect first time buy for those seeking a high standard of finish. Viewing very highly recommended.

Council Tax band: C

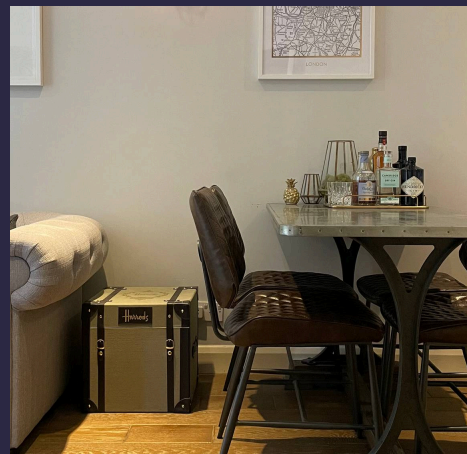
Tenure: Leasehold - 88 Years Remaining

Service Charge £3151 per annum

EPC Energy Efficiency Rating: E

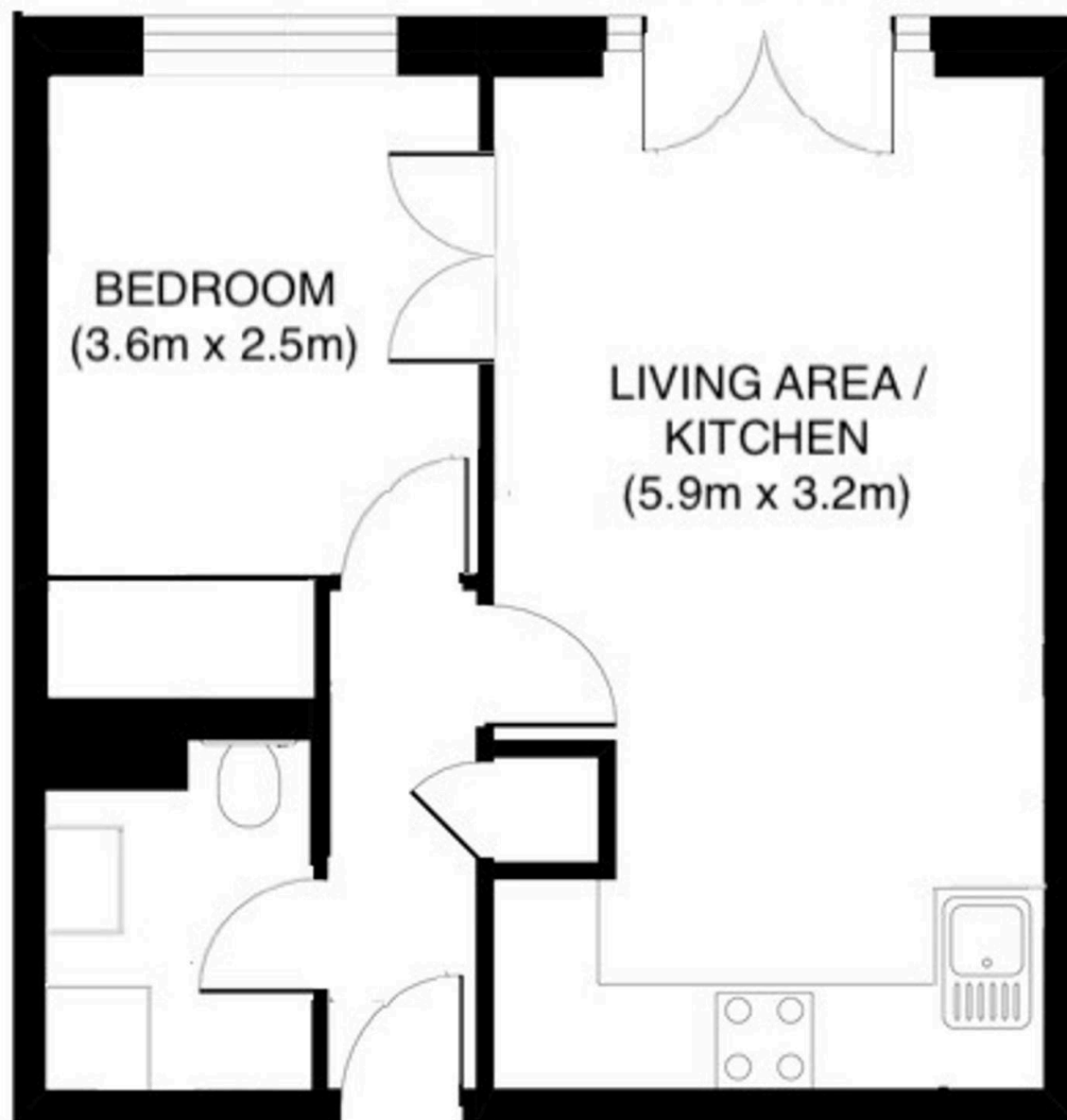
EPC Environmental Impact Rating: D

- Exquisite one bedroom ground floor apartment
- Direct access to garden space
- Open plan lounge/dining room/kitchen
- Modern shower room
- Gated community - Bow Quarter
- 24 Hour Concierge, Communal Gymnasium and Swimming Pool
- 0.2 Miles to Bow Church Station (DLR) & 0.3 Miles to Bow Road Station (District/Hammersmith & City)
- Landscaped gardens and communal terrace





Fairfield Road, London,
Approx. area 370 sq ft / 34.3 sqm
For indication purposes only - not to scale



GROUND FLOOR



Oliver Jaques Bow

Oliver Jaques Estate Agents Ltd, Unit A Arlington Building – E3 2UB

02089800999 • East@o-j.co.uk • o-j.co.uk/