



**Manhattan Building, Bow Quarter**  
London

Guide Price £600,000

**OLIVER O'JAQUES**  
EST. 1986

# Manhattan Building

Bow Quarter, London

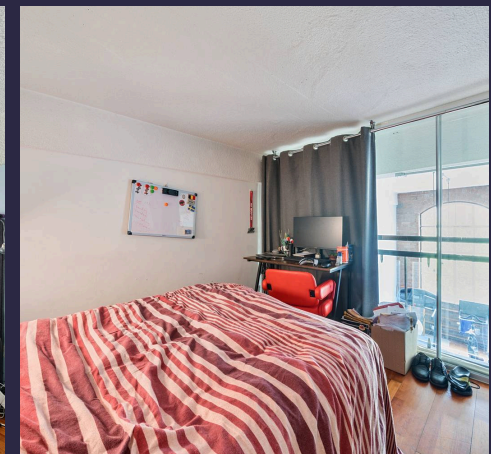
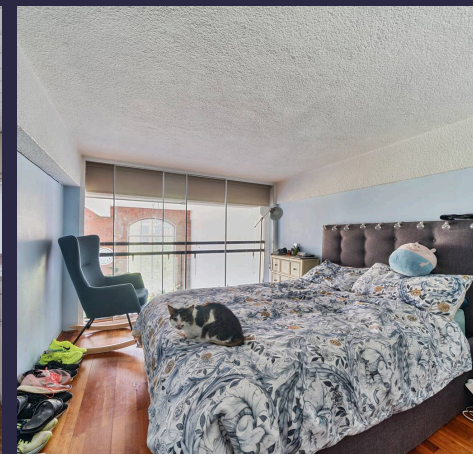
Extending to 994 Sq Ft (92SqM) is this impressive duplex apartment located in the popular gated community of Bow Quarter. The apartment enjoys two original factory style windows facing to a Southerly Elevation, allowing plenty of natural light into the spacious, open plan reception/dining room. Council Tax band: E

Tenure: Leasehold - 88 Years Remaining

Service Charge £4500 per Annum Approx

EPC Energy Efficiency Rating: B

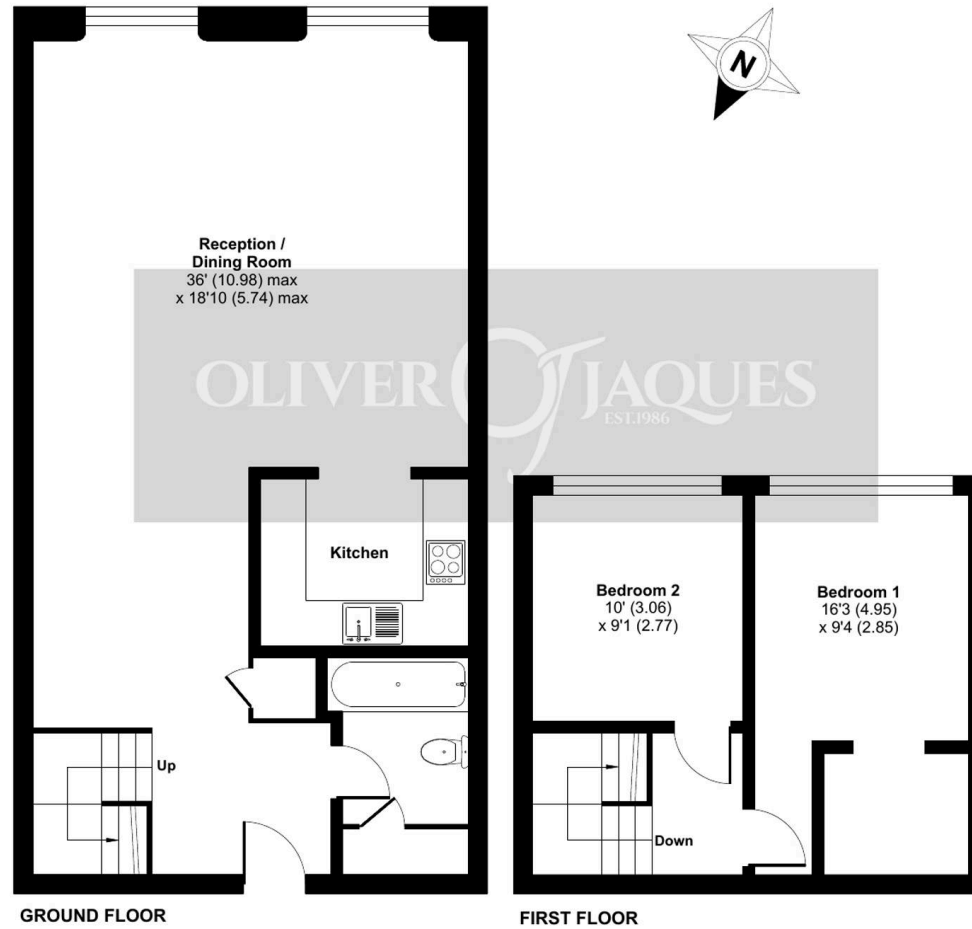
- Exquisite Grade II Listed Factory Style Apartment
- Two Double Bedrooms overlooking the Living Area
- Located within the Historical Bryant & May Matchstick Factory
- Open-Plan Reception Room with Two Original Factory Style Windows
- Popular Gated Community - Bow Quarter
- Allocated and Gated Underground Parking Space
- 24 Hour Concierge, Communal Gymnasium and Swimming Pool
- Beautiful Landscaped Grounds, On Site Coffee Shop and Convenience Store
- 0.2 Miles to Bow Church Station (DLR)
- & 0.3 Miles to Bow Road Station (District/Hammersmith and City)
- No Onward Chain



# Fairfield Road, London, E3

Approximate Area = 994 sq ft / 92.3 sq m

For identification only - Not to scale





## Oliver Jaques Bow

Oliver Jaques Estate Agents Ltd, Unit A Arlington Building – E3 2UB

02089800999 • [East@o-j.co.uk](mailto:East@o-j.co.uk) • [o-j.co.uk/](http://o-j.co.uk/)