



Lexington Building, Bow Quarter, Fairfield Road

London

Guide Price £525,000

OLIVER *OJ* JAQUES
EST. 1986

Flat 419 Lexington Building

Bow Quarter, London

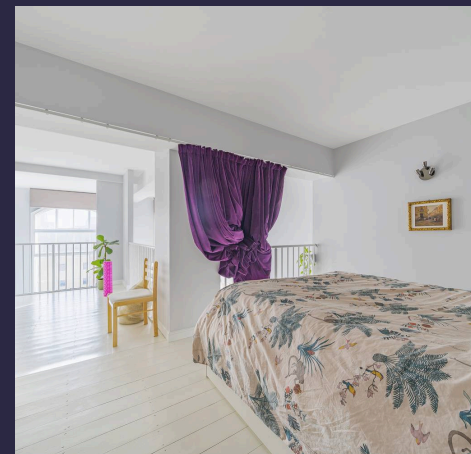
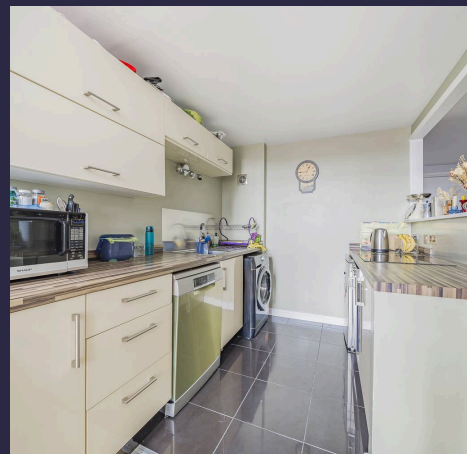
This impressive Grade II listed Duplex Apartment is located in the original Bryant & May Factory in Bow Quarter. Presented to a very good standard, it has the benefit of Two Double Bedrooms and Two Bathrooms. The accommodation also includes a study room with double doors leading to the reception area, making the accommodation very flexible. We highly recommend an internal viewing. Council Tax band: E

Tenure: Leasehold

EPC Energy Efficiency Rating: C

EPC Environmental Impact Rating: C

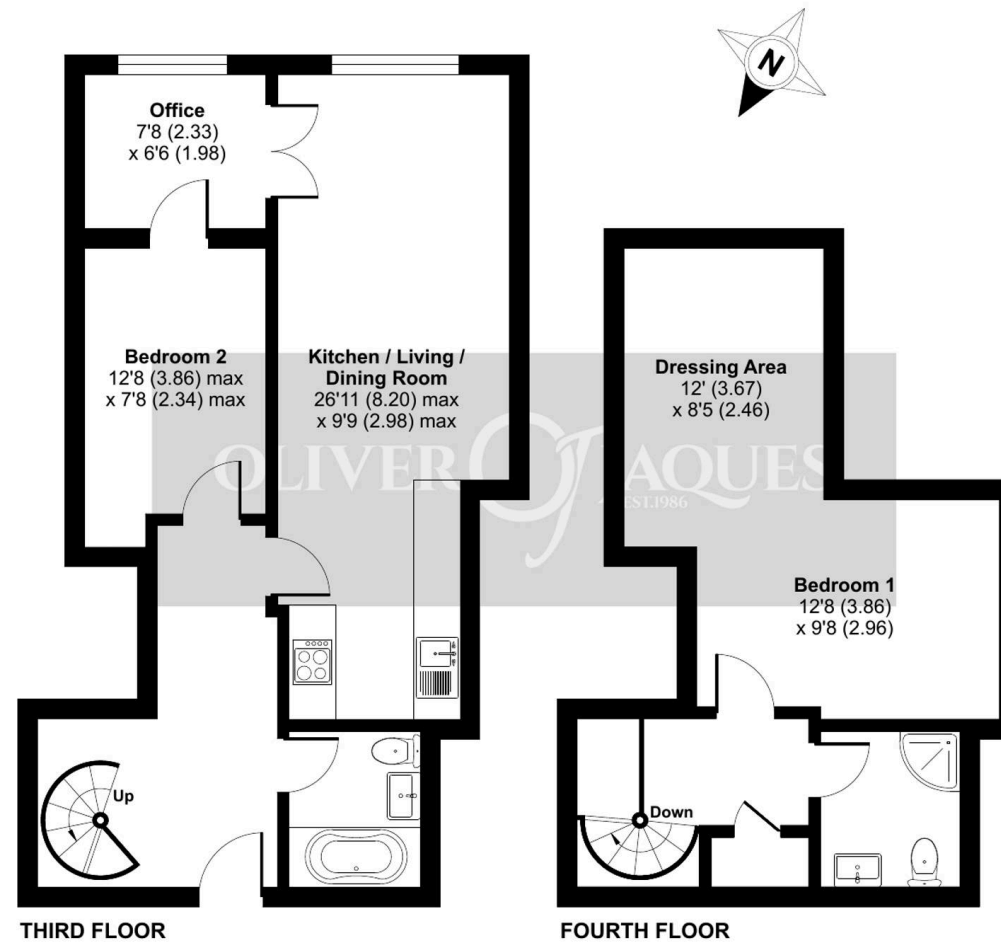
- Stunning Fourth Floor Duplex Apartment within the Matchstick Factory Conversion in Bow Quarter
- Two Double Bedrooms and Two Bathrooms
- Two Original South Facing Factory Style Windows
- Impressive Open Plan Lounge/Dining Room/Kitchen with additional Study Room
- 24 Hour Concierge, Communal Gymnasium and Swimming Pool
- 0.4 Miles to Bow Church Station (DLR) & 0.6 Miles to Bow Road Station (District/Hammersmith and City)
- Beautiful Landscaped Grounds, On Site Coffee Shop and Convenience Store



Fairfield Road, London, E3

Approximate Area = 885 sq ft / 82.2 sq m

For identification only - Not to scale





Oliver Jaques Bow

Oliver Jaques Estate Agents Ltd, Unit A Arlington Building - E3 2UB

02089800999 • East@o-j.co.uk • o-j.co.uk/