



Neptune Court Homer Drive, London

London

Guide Price £675,000

OLIVER *O* J AQUES  
EST. 1986



# Flat 3

Neptune Court Homer Drive, London

This Exquisite Fourth Floor apartment is located in the exclusive gated development of Cyclops Wharf on the West side of the Isle of Dogs. The property has been renovated to a high standard with beautifully finished wooden flooring and a luxury kitchen.

Enjoying direct views over the River Thames from the main reception, private balcony and main bedroom. The development itself also has the benefit of a Swimming Pool, 24 Hour Concierge, Gym, Sauna and Stream Room.

Council Tax band: F

Tenure: Leasehold

EPC Energy Efficiency Rating: B

EPC Environmental Impact Rating: C

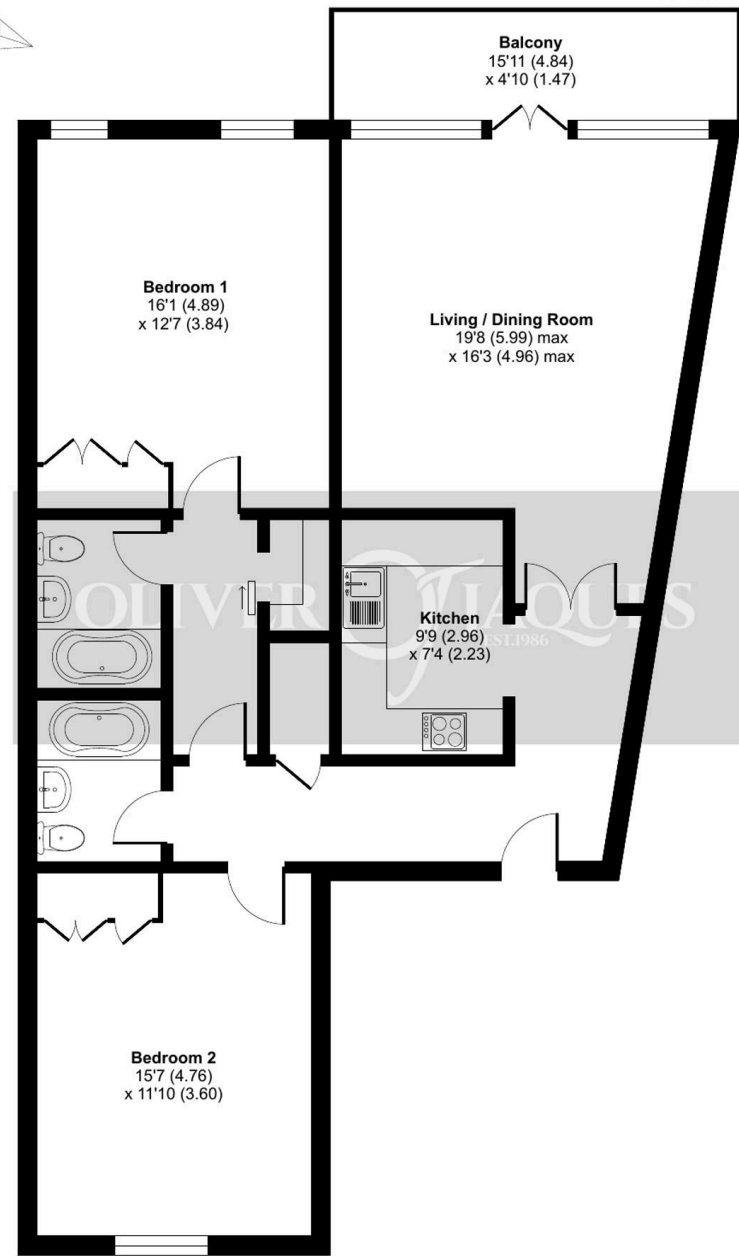
- Exquisite Apartment within this Exclusive Gated Development on the River Thames
- Private Balcony Enjoying Direct River Views
- Accommodation Extending to 1025 Sq Ft
- Recently Refurbished with Modern Flooring Throughout and Luxury Kitchen
- Two Double Bedrooms to include a Main Bedroom Suite
- Allocated Gated Parking Space
- EV Charging Pods & Underfloor Heating
- Communal Facilities to include 24 hour Concierge, Swimming Pool, Gym, Steam room and Sauna
- Mudchute DLR Station (0.5 miles) providing access to Canary Wharf



# Neptune Court, Homer Drive, London, E14

Approximate Area = 1025 sq ft / 95.2 sq m

For identification only - Not to scale

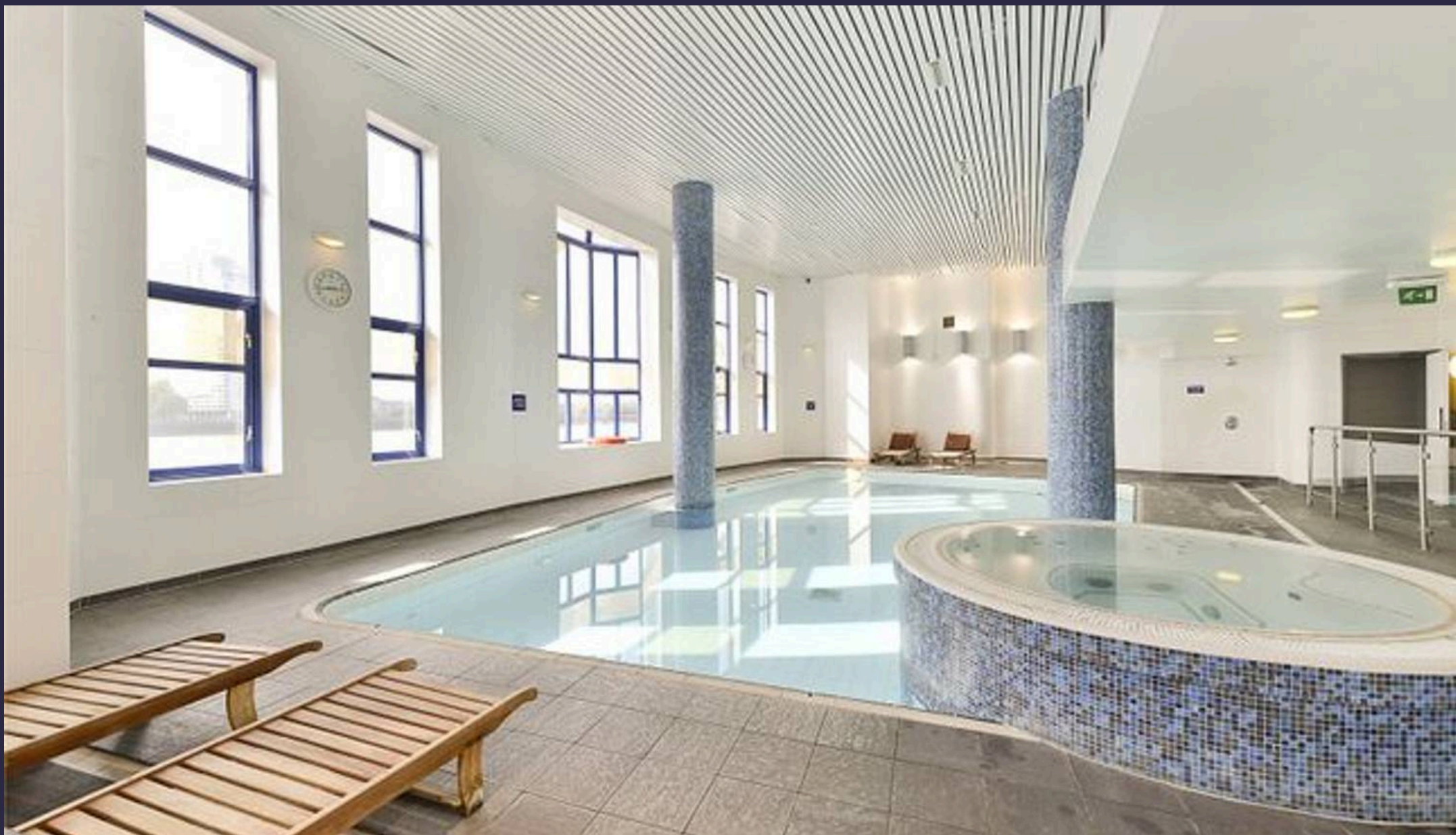


**FOURTH FLOOR**



Floor plan produced in accordance with RICS Property Measurement 2nd Edition,  
Incorporating International Property Measurement Standards (IPMS2 Residential). © nchecon 2025.  
Produced for Oliver Jaques. REF: 1236013





## Oliver Jaques Bow

Oliver Jaques Estate Agents Ltd, Unit A Arlington Building – E3 2UB

02089800999 • [East@o-j.co.uk](mailto:East@o-j.co.uk) • [o-j.co.uk/](http://o-j.co.uk/)