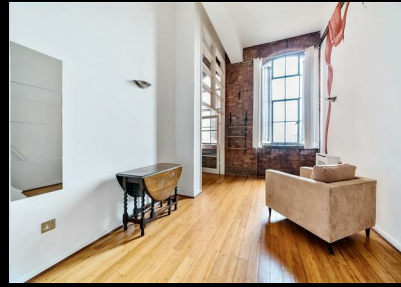




# Lexington Building, The Bow Quarter

Asking Price £510,000 Leasehold

OLIVER  JAUQUES  
EST.1986



## Lexington Building, The Bow Quarter

A spacious two bedroom third floor apartment offering great views of Bow Quarter's communal grounds. The apartment has substantial living space with an abundance of natural light flooding both living room spaces including the open plan kitchen and both bedrooms which are located on the mezzanine levels. Additional benefits include 24 hour concierge, and the use of the on-site leisure facilities including pool, sauna, steam room, and gymnasium and the transport links of the Docklands Light Railway and Central line services on Bow Road are only a short walk away.

- Two Bedrooms
- High Ceilings
- Fantastic Leisure Facilities
- 24h Concierge & Security
- Communal Gardens
- Two Car Parking Space

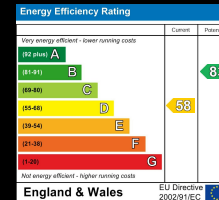
Oliver Jaques Bow Lettings  
020 8980 0999

Email [east@o-j.co.uk](mailto:east@o-j.co.uk)

Unit A Arlington Building, 60 Fairfield Road, London, E3 2UB

web <https://www.o->

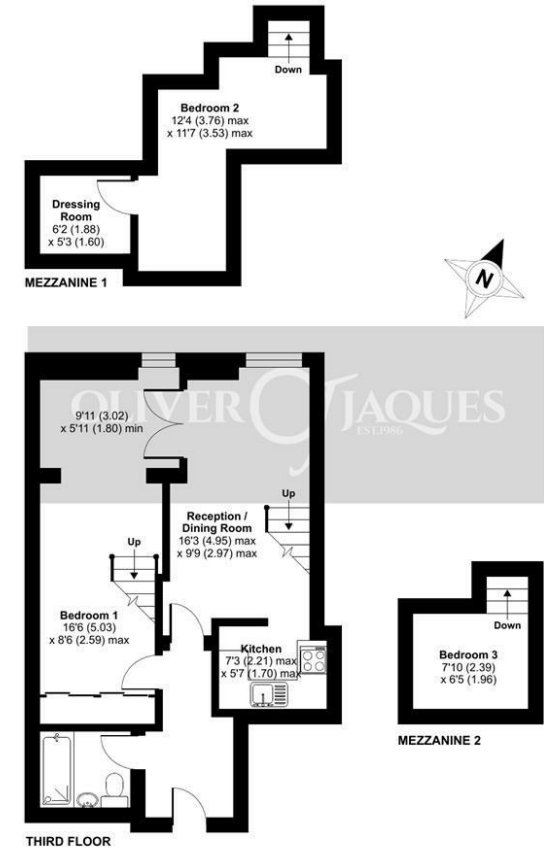
Every care has been taken with the preparation of this brochure but it is for general guidance only and complete accuracy cannot be guaranteed. If there is any point, which is of importance professional verification should be sought. This brochure does not constitute a contract or part of a contract. We are not qualified to verify tenure of property. Prospective purchasers should seek clarification from their solicitor or verify the tenure of this property for themselves by visiting [www.gov.uk/government/organisations/land-registry](http://www.gov.uk/government/organisations/land-registry). The mention of any appliances, fixtures or fittings does not imply they are in full working order. Photographs are reproduced for general information and it cannot be inferred that any item shown is included in the sale. All dimensions are approximate. Walking times are taken from Google Maps and measured from the centre of the postcode, which may differ from the individual property. We routinely refer clients to Chancery Mortgage Services Ltd. It is your decision whether you choose to deal with Chancery Mortgage Services Ltd. In making that decision, you should know that we receive an annual payment benefits from Chancery Mortgage Services Ltd, equating to approximately £220 per referral



Fairfield Road, London, E3

Approximate Area = 727 sq ft / 67.5 sq m

For identification only - Not to scale



Floor plan produced in accordance with RICS Property Measurement Standards incorporating International Property Measurement Standards (IPMS2 Residential). © rnhccom 2024. Produced for Oliver Jaques. REF: 1097379

**Tenure:** Leasehold  
**Ground Rent:** TBC  
**Service Charge:** TBC  
**Lease Expires:** TBC  
**Shared Ownership:** No  
**Council Tax Band:** Tower Hamlets London Borough Council (Band D)  
**£TBC**