



Park West, Bow Quarter

Guide Price £475,000 Leasehold

OLIVER *OJ* JAQUES
EST. 1986



Park West, Bow Quarter

A well presented, first floor, 2-bedroom apartment located in the Park West building of the popular Bow Quarter development. The property benefits from a large living room and modern kitchen which are flooded with light from the West facing windows. There are two well proportioned double bedrooms and contemporary 3-piece bathroom suite. As residents of the Bow Quarter, you have access to a range of amenities including 15m pool, sauna, steam room, gym, 24h concierge, postal service, on-site convenience store and soon to open coffee shop.

Local transport links include the DLR from Bow Church, Circle, District and Hammersmith and City lines from Bow Road and Central and district lines from Mile End station. There are also various bus routes immediately outside the development.

- Gated Development
- 24H Concierge & Security
- Leisure Facilities including Pool & Gym
- Two Double Bedrooms
- Excellent Transport Links
- West Facing

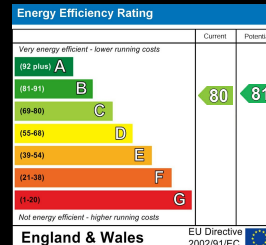
Oliver Jaques Bow Sales
020 8980 0999

Email southeast@o-j.co.uk

Unit A Arlington Building, London, E3 2UB

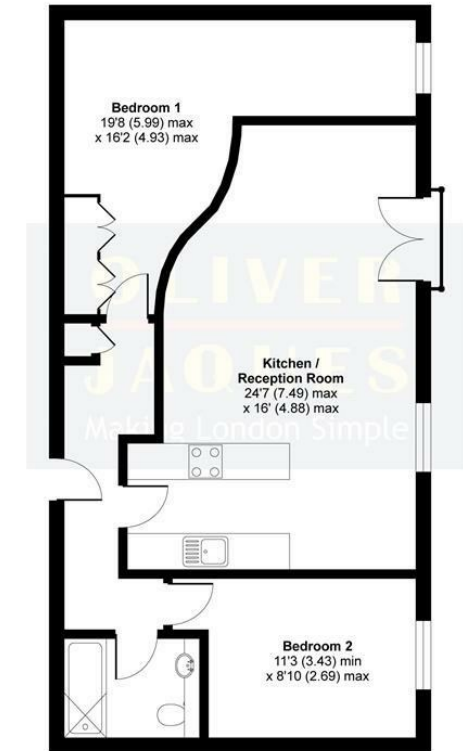
web <https://www.o-j.co.uk/>

Every care has been taken with the preparation of this brochure but it is for general guidance only and complete accuracy cannot be guaranteed. If there is any point, which is of importance professional verification should be sought. This brochure does not constitute a contract or part of a contract. We are not qualified to verify tenure of property. Prospective purchasers should seek clarification from their solicitor or verify the tenure of this property for themselves by visiting www.gov.uk/government/organisations/land-registry. The mention of any appliances, fixtures or fittings does not imply they are in full working order. Photographs are reproduced for general information and it cannot be inferred that any item shown is included in the sale. All dimensions are approximate. Walking times are taken from Google Maps and measured from the centre of the postcode, which may differ from the individual property. We routinely refer clients to Chancery Mortgage Services Ltd. It is your decision whether you choose to deal with Chancery Mortgage Services Ltd. In making that decision, you should know that we receive an annual payment benefits from Chancery Mortgage Services Ltd, equating to approximately £220 per referral



Park West Building, Bow Quarter, Fairfield Road, E3

APPROX. GROSS INTERNAL FLOOR AREA 776 SQ FT 72 SQ METRES



FIRST FLOOR

Whilst every attempt has been made to ensure the accuracy of the floor plan contained here, measurements of doors, windows and rooms are approximate and no responsibility is taken for any error, omission or misstatement. These plans are for representation purposes only as defined by RICS Code of Measuring Practice and should be used as such by any prospective purchaser. Specifically no guarantee is given on the total square footage of the property if quoted on this plan. Any figure given is for initial guidance only and should not be relied on as a basis of valuation.

Copyright nichecom.co.uk 2016 Produced for Oliver Jaques REF : 137581

Tenure: Leasehold

Ground Rent: £125.00 p/a

Service Charge: £5,300.00 p/a

Lease Expires: 25/12/2113

Shared Ownership: No

Council Tax Band: Tower Hamlets (Band E)

£2,047.85 p/a