



Manhattan Building, Fairfield Road, London

Guide Price £615,000 Leasehold

OLIVER  JACQUES
EST.1986



Manhattan Building, Fairfield Road, London

A characterful grade II listed, larger than most, 2-bedroom loft-style apartment located within the private and serene Bow Quarter development. The apartment exhibits characterful original features such as exposed brick walls, large original windows with amazing views of the Olympic Park and Stratford skyline and double-height ceilings. The property also boasts ample storage as well as a recent architect-designed renovation which includes a modern, open plan kitchen, extended and enclosed mezzanine with full height crittall windows, walk-in wardrobe and contemporary three piece bathroom suite. This apartment comes with an allocated, secure parking space in the underground car park. Residents of the Bow Quarter development are serviced by numerous amenities including a leisure centre with 15m heated pool, jacuzzi, sauna, steam room and gym, 24 hour concierge, on-site postal service, on-site convenience store and coffee shop (opening soon). Furthermore, there are two beautifully maintained communal gardens and a large roof-terrace with a WIFI connection.

The Bow Quarter benefits from a fantastic location with the buzz of Hackney Wick and Victoria Park just moments away and excellent transport links within a 10 minute stroll. The DLR (0.3 miles) provides easy access to the amenities of Canary Wharf and Stratford and Bow Road Station (0.5 miles) is serviced by the District and Hammersmith and City Lines for quick access into the city. There are also numerous bus routes immediately outside the main entrance.

- Exposed Brick Walls
- Architect-Designed Renovation
- Gated Development with 24hr Concierge & Security
- Secure Underground Parking
- Large Interior Crittall Windows
- Extended and Enclosed Mezzanine
- Fantastic Leisure Facilities including Gym & Pool

Oliver Jaques Bow Sales
020 8980 0999

Email southeast@o-j.co.uk

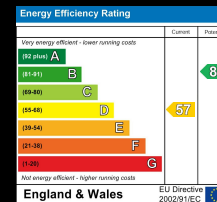
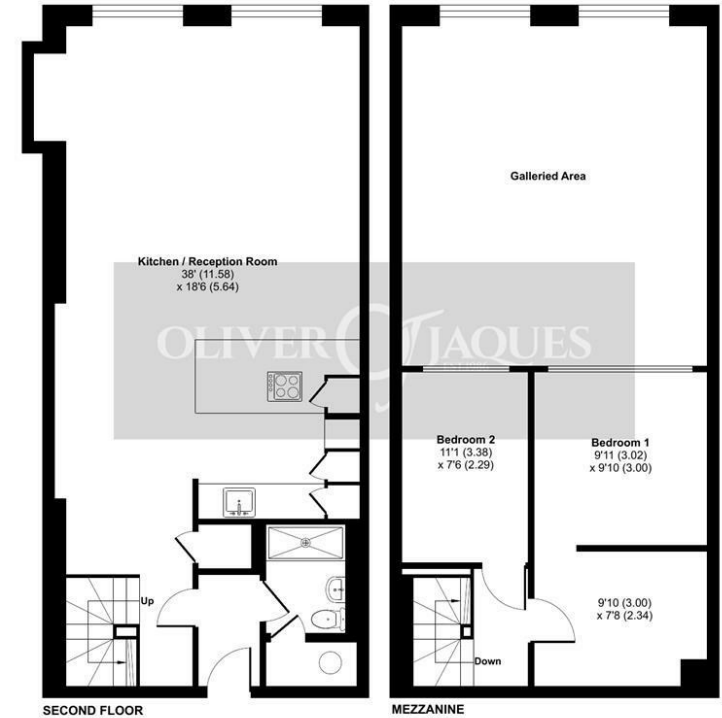
Unit A Arlington Building, London, E3 2UB

web <https://www.o-j.co.uk/>

Every care has been taken with the preparation of this brochure but it is for general guidance only and complete accuracy cannot be guaranteed. If there is any point, which is of importance professional verification should be sought. This brochure does not constitute a contract or part of a contract. We are not qualified to verify tenure of property. Prospective purchasers should seek clarification from their solicitor or verify the tenure of this property for themselves by visiting www.gov.uk/government/organisations/land-registry. The mention of any appliances, fixtures or fittings does not imply they are in full working order. Photographs are reproduced for general information and it cannot be inferred that any item shown is included in the sale. All dimensions are approximate. Walking times are taken from Google Maps and measured from the centre of the postcode, which may differ from the individual property. We routinely refer clients to Chancery Mortgage Services Ltd. It is your decision whether you choose to deal with Chancery Mortgage Services Ltd. In making that decision, you should know that we receive an annual payment benefits from Chancery Mortgage Services Ltd, equating to approximately £220 per referral

Bow Quarter, Fairfield Road, London, E3

Approximate Area = 963 sq ft / 89.4 sq m
For identification only - Not to scale



RICS Certified Property Measurer Floor plan produced in accordance with RICS Property Measurement Standards incorporating International Property Measurement Standards (IPMS2 Residential). © rnichecom 2024. Produced for Oliver Jaques. REF: 1091147

Tenure: Leasehold
Ground Rent: TBC
Service Charge: TBC
Lease Expires: TBC
Shared Ownership: No
Council Tax Band: Tower Hamlets (Band E)
£TBC