



# Central House, 32-66 High Street

Guide Price £325,000 Leasehold

OLIVER  JAUQUES  
EST.1986



## High Street, London, E15

Approximate Area = 620 sq ft / 57.5 sq m

For identification only - Not to scale

## Central House, 32- 66 High Street

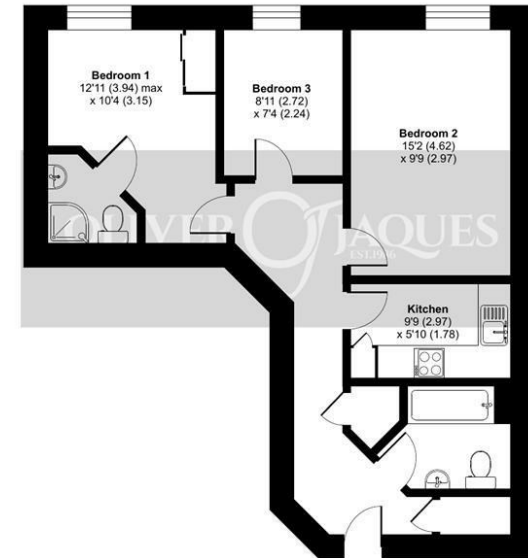
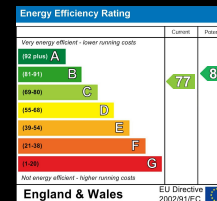
Located within the heart of Stratford, this eighth floor, 2-bedroom, 2-bathroom apartment set in Central House is 620sqft and comprises of a bright living room, generously sized master bedroom with en-suite bathroom and modern kitchen. Further benefits include uninterrupted views of the Olympic Park and beyond, a long lease and an allocated parking space. The development offers a residents gym / sauna as well as a concierge. Located superbly with Pudding Mill Lane Station (DLR) and Stratford Central, Westfield Shopping Centre and Queen Elizabeth Olympic Park all within walking distance.

Oliver Jaques Bow Sales  
020 8980 0999

Email [southeast@o-j.co.uk](mailto:southeast@o-j.co.uk)

Unit A Arlington Building, London, E3 2UB

web <https://www.o-j.co.uk/>



Floor plan produced in accordance with RICS Property Measurement Standards incorporating International Property Measurement Standards (IPMS2 Residential). © rnichecom 2024. Produced for Oliver Jaques. REF: 1074271

**Tenure:** Leasehold

**Ground Rent:** £250p/a

**Service Charge:** £3,700p/a

**Lease:** 976 years

**Shared Ownership:** No

**Council Tax Band:** Newham Council (Band C)

Every care has been taken with the preparation of this brochure but it is for general guidance only and complete accuracy cannot be guaranteed. If there is any point, which is of importance professional verification should be sought. This brochure does not constitute a contract or part of a contract. We are not qualified to verify tenure of property. Prospective purchasers should seek clarification from their solicitor or verify the tenure of this property for themselves by visiting [www.gov.uk/government/organisations/land-registry](http://www.gov.uk/government/organisations/land-registry). The mention of any appliances, fixtures or fittings does not imply they are in full working order. Photographs are reproduced for general information and it cannot be inferred that any item shown is included in the sale. All dimensions are approximate. Walking times are taken from Google Maps and measured from the centre of the postcode, which may differ from the individual property. We routinely refer clients to Chancery Mortgage Services Ltd. It is your decision whether you choose to deal with Chancery Mortgage Services Ltd. In making that decision, you should know that we receive an annual payment benefits from Chancery Mortgage Services Ltd, equating to approximately £220 per referral.