



Arlington Building, Bow Quarter

Guide Price £425,000 Leasehold

OLIVER  JACQUES
EST. 1986



Arlington Building, Bow Quarter

Oliver Jaques welcomes to the market this grade II listed, 650sq ft. double aspect, two bedroom, first floor apartment located in the converted Victorian office building within the prestigious Bow Quarter development. This apartment benefits from high ceilings, Victorian sash windows, an open plan kitchen and a naturally bright, well-proportioned living area. The property also has access to a secure underground parking space and has voting rights for the board of the freeholder (LAH).

The Bow Quarter development offers various amenities to its residents including 24 hour concierge and security, large communal roof terrace, on-site postal office, on-site convenience store, leisure facilities including 15 meter swimming pool, steam room, sauna and fully equipped gym. Local transport links include the DLR from Bow Church, Circle, District and Hammersmith and City lines from Bow Road and Central and district lines from Mile End station. There are also various bus routes immediately outside the development.

- Secure Underground Parking
- Gated Development
- 24 Hour Concierge
- Leisure Facilities
- Dual Aspect
- High Ceilings

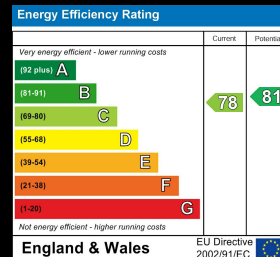
• Share in Freehold
Oliver Jaques Bow Sales
020 8980 0999

Email southeast@o-j.co.uk

Unit A Arlington Building, London, E3 2UB

Every care has been taken with the preparation of this brochure but it is for general guidance only and complete accuracy cannot be guaranteed. If there is any point, which is of importance professional verification should be sought. This brochure does not constitute a contract or part of a contract. We are not qualified to verify tenure of property. Prospective purchasers should seek clarification from their solicitor or verify the tenure of this property for themselves by visiting www.gov.uk/government/organisations/land-registry. The mention of any appliances, fixtures or fittings does not imply they are in full working order. Photographs are reproduced for general information and it cannot be inferred that any item shown is included in the sale. All dimensions are approximate. Walking times are taken from Google Maps and measured from the centre of the postcode, which may differ from the individual property. We routinely refer clients to Chancery Mortgage Services Ltd. It is your decision whether you choose to deal with Chancery Mortgage Services Ltd. In making that decision, you should know that we receive an annual payment benefits from Chancery Mortgage Services Ltd, equating to approximately £220 per referral

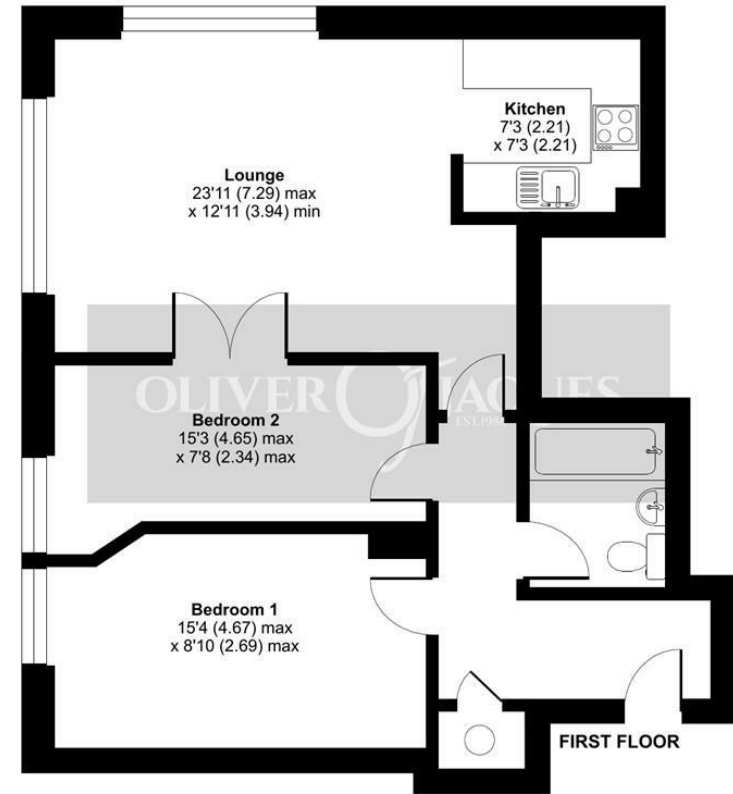
web <https://www.o-j.co.uk/>



Bow Quarter, Fairfield Road, London, E3

Approximate Area = 656 sq ft / 60.9 sq m

For identification only - Not to scale



Floor plan produced in accordance with RICS Property Measurement Standards incorporating International Property Measurement Standards (IPMS2 Residential). ©inthechom 2023. Produced for Oliver Jaques. REF: 1069381

Tenure: Leasehold

Lease Expires: 2113

Shared Ownership: No

Council Tax Band: Tower Hamlets (Band D)

£1,581.02 p/a