

Mary Rose Square, Surrey Quays

Asking Price £925,000 Freehold

OLIVER  JACQUES
EST. 1986



Mary Rose Square, Surrey Quays

A substantial four bed townhouse spanning 128.3sqm (1,382sqft), which forms part of a recent Berkeley Homes development moments from the tranquil Surrey Docks. Still under its new home guarantee, this quietly positioned property enjoys four well-proportioned bedrooms (with two being en suite), a naturally bright, west-facing living room and a separate open plan kitchen/diner which offers a great space for entertaining and growing families alike. To the rear, the garden extends approx. 30ft from the house and is mostly laid to astro-turf with a patio space for al fresco dining. Offering rarely found, family-sized accommodation in SE16, this property is located within 13 minutes stroll of Underground and Thames Clipper services and makes a great home from which to commute.

- Four Bedroom Townhouse
- Recent Berkeley Homes Build
- Front and Back Gardens
- Cul-de-Sac Location
- Access to 24hr Concierge Service
- Sold with New Homes Guarantee

South East London
020 7231 5050

Email southeast@o-j.co.uk

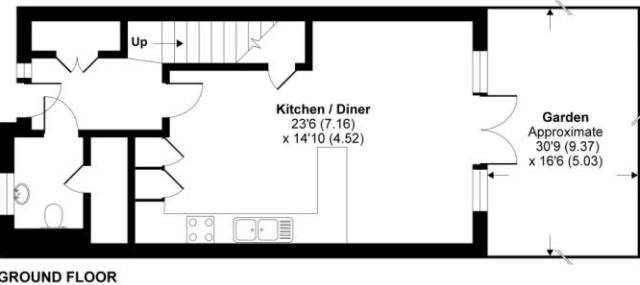
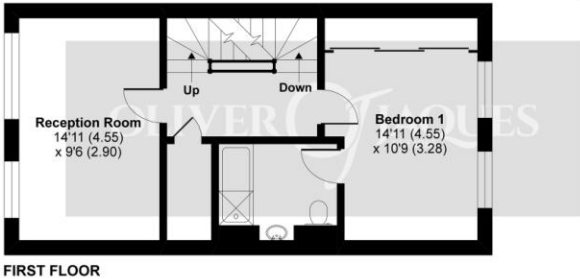
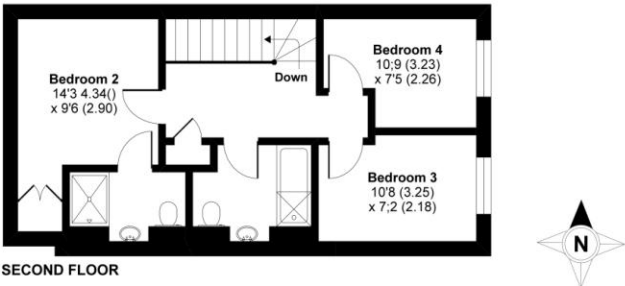
229-231 Lower Road, London, SE16 2LW

web www.o-j.co.uk

Every care has been taken with the preparation of this brochure but it is for general guidance only and complete accuracy cannot be guaranteed. If there is any point, which is of importance professional verification should be sought. This brochure does not constitute a contract or part of a contract. We are not qualified to verify tenure of property. Prospective purchasers should seek clarification from their solicitor or verify the tenure of this property for themselves by visiting www.landregisteronline.gov.uk. The mention of any appliances, fixtures or fittings does not imply they are in full working order. Photographs are reproduced for general information and it cannot be inferred that any item shown is included in the sale. All dimensions are approximate. Walking times are taken from Google Maps and measured from the centre of the postcode, which may differ slightly from the individual property.

Mary Rose Square, London, SE16

Approximate Area = 1382 sq ft / 128.3 sq m
For identification only - Not to scale



RICS Certified Property Measurer
Floor plan produced in accordance with RICS Property Measurement Standards incorporating International Property Measurement Standards (IPMS2 Residential). © richcom 2020. Produced for Oliver Jacques. REF: 615288

