



Alloa Road, London
London

£675,000

OLIVER *OJ* JAUQUES
EST. 1986

Alloa Road

London

This Victorian mid-terraced house, dating from the 1890s offers great potential for anyone looking for their future family home.

The property retains several original features including fireplaces, wooden flooring, and original doors with plenty of scope to upgrade and update the kitchen as well as extend into the loft.

The property features two reception rooms and a kitchen and utility room on the ground floor leading on to a patioed garden. Upstairs, there are three bedrooms and two bathrooms. The property also comes with a basement.

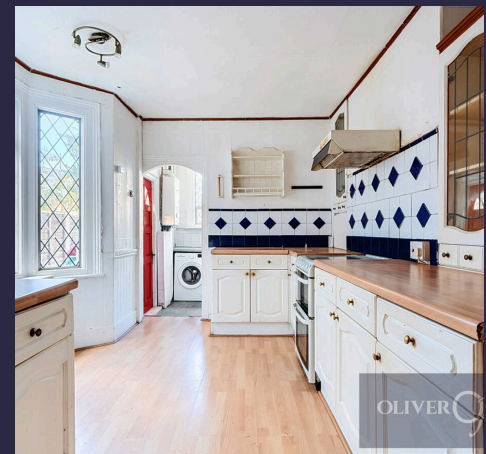
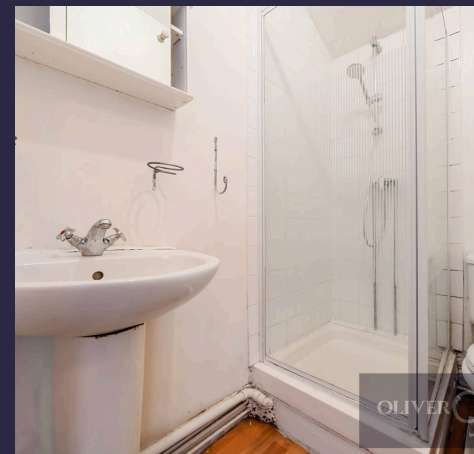
Council Tax band: C

Tenure: Freehold

EPC Energy Efficiency Rating: E

EPC Environmental Impact Rating: E

- Three Bedrooms
- Victorian Terraced Home
- Spacious Back Garden
- Close to local amenities
- Close to Deptford Park
- Surrey Quays Overground Station, 0.5 Miles



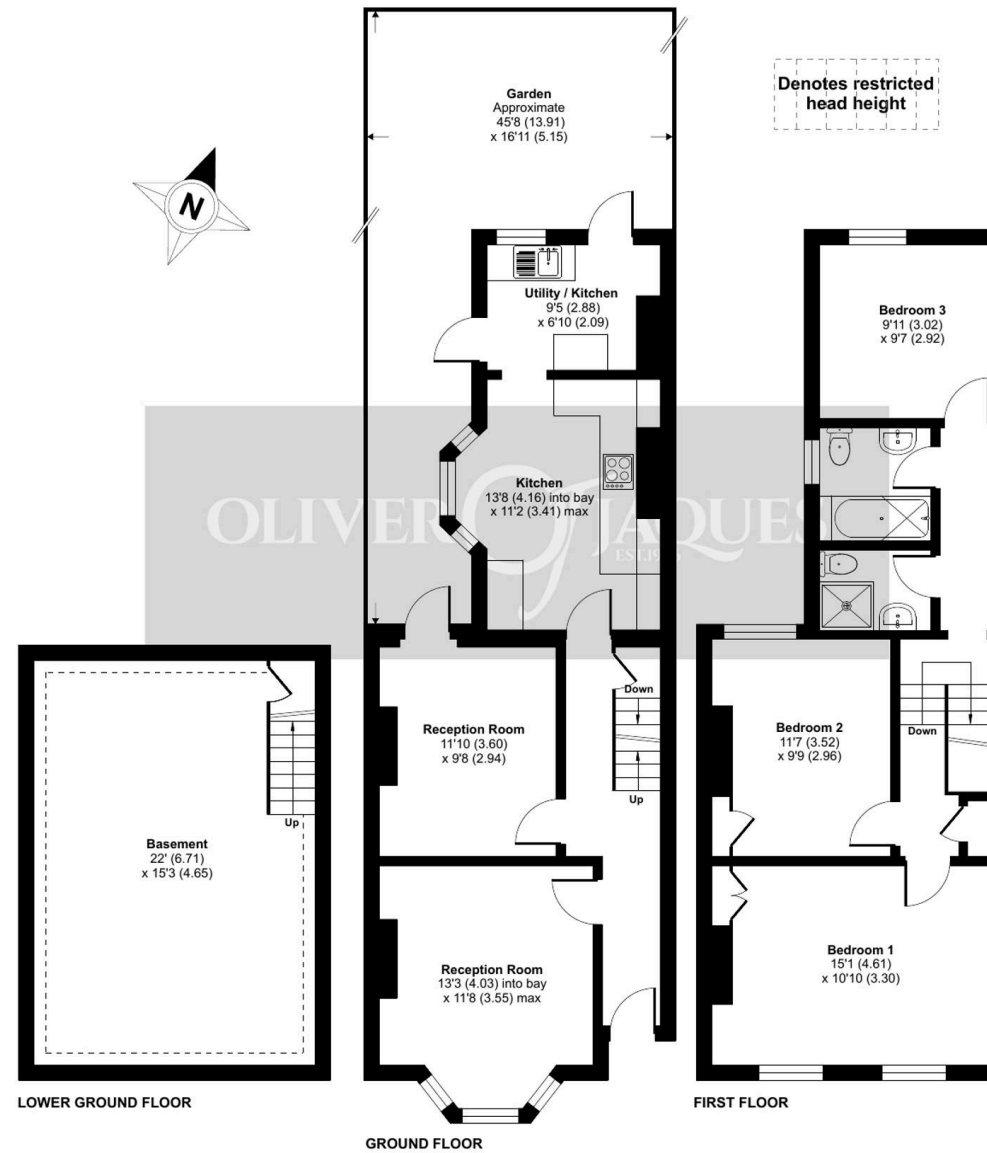
Alloa Road, London, SE8

Approximate Area = 1129 sq ft / 104.9 sq m

Limited Use Area(s) = 337 sq ft / 31.3 sq m

Total = 1466 sq ft / 136.2 sq m

For identification only - Not to scale





Oliver Jaques

Oliver Jaques, 229-231 Lower Road - SE16 2LW

02072315050 • southeast@o-j.co.uk • o-j.co.uk/

Every care has been taken with the preparation of this brochure but it is for general guidance and complete accuracy can't be guaranteed. Prospective purchasers should seek clarification from their solicitor. The mention of any appliances fixtures or fittings does not imply they are in working order.