



7 Thame Road, London

London

Offers Over £325,000



7 Thame Road

London, London

****Share of Freehold**** One bedroom apartment.

Situated on a leafy residential street, this one double bedroom apartment is located in a small private block on Thame Road and offered to the market 'Chain Free'. The property offers secure entry-phone system to control access to the building as well as having its own communal gardens and allocated parking space.

Canada Water station with the Jubilee line and Overground is close by (0.5m away) as is Rotherhithe Overground station (0.4m away). Also close by (0.7m away) is Nelson Dock Pier with the shuttle ferry to Canary Wharf that has three trips an hour.

Stave Hill ecological park is also located a stones through from the property (0.2m away) along with Southwark park being just 1.0 mile away which both provide a quiet and calm space.

The property also benefits from the significant ongoing investment in the area with the **Canada Water Masterplan**. Located just 0.9 miles away, this 15-year regeneration project aims to transform the area into a vibrant new urban hub. Covering 53 acres, the plan includes the development of a new town centre, extensive public spaces and a range of new buildings, shops and workspaces.

<https://canadawater.co.uk/vision/masterplan/>

Council Tax band: C

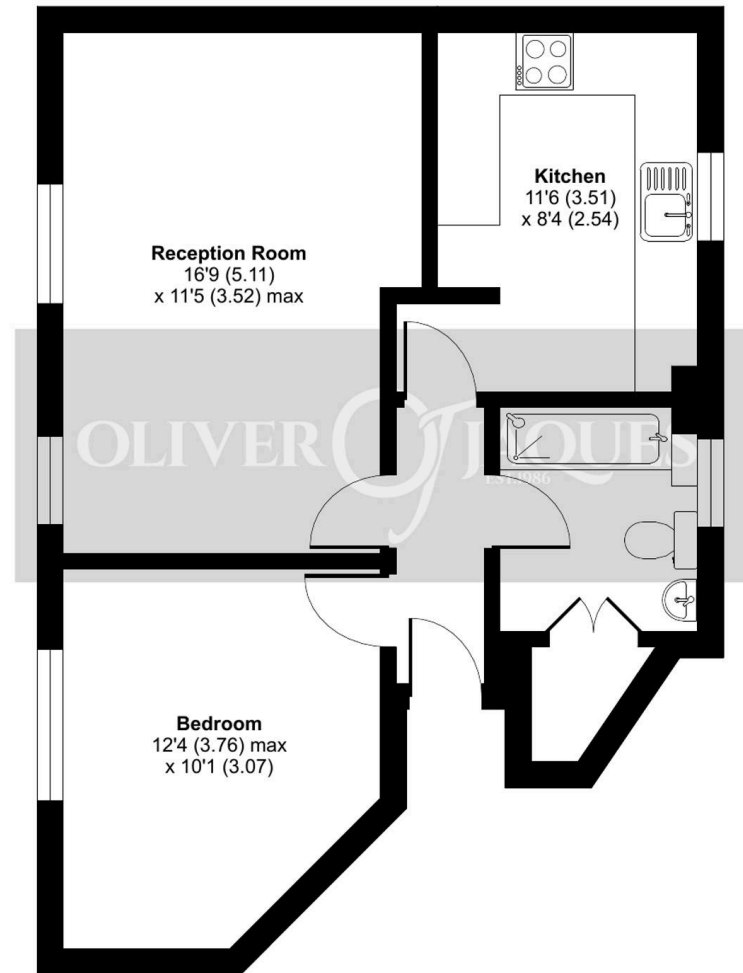
Tenure: Share of Freehold



Thame Road, London, SE16

Approximate Area = 499 sq ft / 46.4 sq m

For identification only - Not to scale





Oliver Jaques

Oliver Jaques, 229-231 Lower Road - SE16 2LW

02072315050 • southeast@o-j.co.uk • o-j.co.uk/

Every care has been taken with the preparation of this brochure but it is for general guidance and complete accuracy can't be guaranteed. Prospective purchasers should seek clarification from their solicitor. The mention of any appliances fixtures or fittings does not imply they are in working order.