



Greenland Mews, London
London

£375,000

OLIVER *OJ* JAQUES
EST. 1986

Greenland Mews

London

Located in a securely gated private development a walkable distance to Surrey Quays, South Bermondsey and Canada Water stations and just a few hundred yards from the planned Bermondsey station.

Council Tax band: C

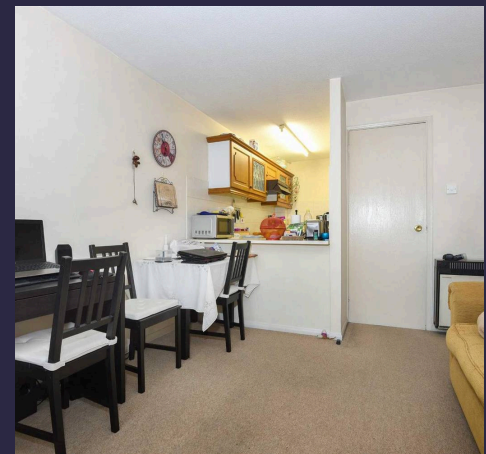
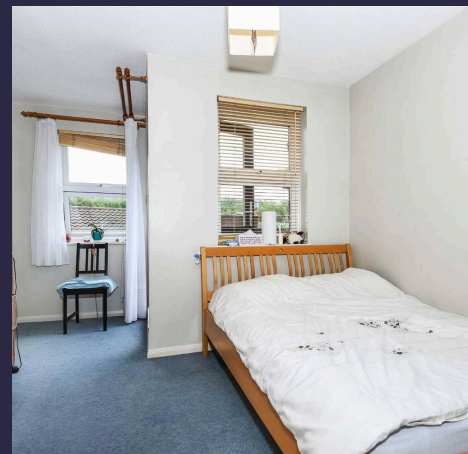
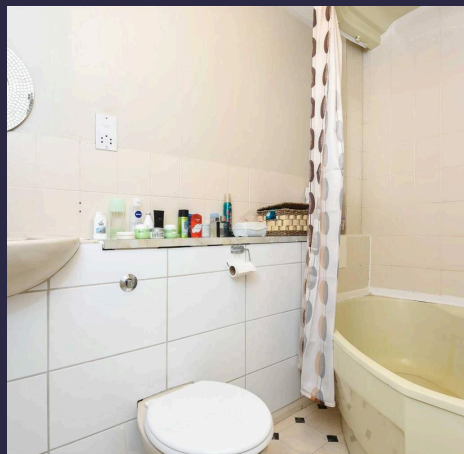
Tenure: Freehold

Service Charge: £448 PA

EPC Energy Efficiency Rating: C

EPC Environmental Impact Rating: E

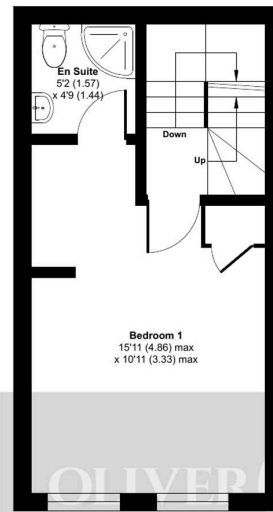
- One Bedroom
- Balcony
- Close to Deptford Park
- Surrey Quays Overground Station, 0.6 Miles
- South Bermondsey Train Station, 0.9 Miles
- Surrey Quays Shopping Centre, 0.7 Miles



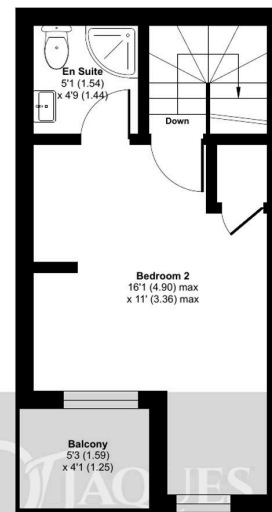
Greenland Mews, London, SE8

Approximate Area = 654 sq ft / 60.7 sq m

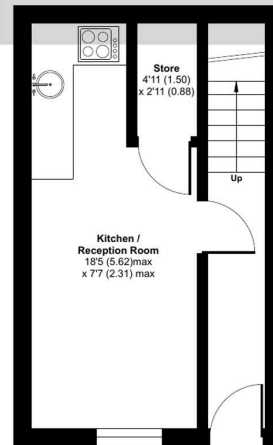
For identification only - Not to scale



FIRST FLOOR



SECOND FLOOR



GROUND FLOOR



Floor plan produced in accordance with RICS Property Measurement 2nd Edition, incorporating International Property Measurement Standards (IPMS2 Residential). © nichecom 2025. Produced for Oliver Jacques. REF: 1340617



Oliver Jaques

Oliver Jaques, 229-231 Lower Road - SE16 2LW

02072315050 • southeast@o-j.co.uk • o-j.co.uk/

Every care has been taken with the preparation of this brochure but it is for general guidance and complete accuracy can't be guaranteed. Prospective purchasers should seek clarification from their solicitor. The mention of any appliances fixtures or fittings does not imply they are in working order.