



Inwen Court Grinstead Road, London
London

£300,000

OLIVER & JAQUES
EST. 1986

Inwen Court Grinstead Road, London

Located opposite the wide open spaces of Deptford Park, this affordably priced property offers a fantastic opportunity for a first time buyer to get a foot on a the local property ladder. This cosy apartment has wooden flooring throughout and internally, the well-presented space is neutrally decorated and enjoys a separate kitchen which opens onto the reception room, bathroom and bedroom.

Council Tax band: B

Tenure: Leasehold

Lease Length: 157 Years Remaining

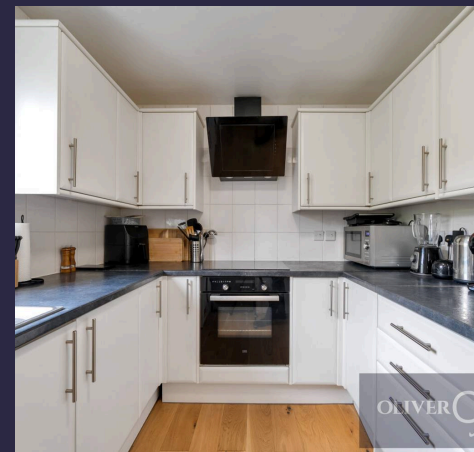
Service Charge: £1,716.00 PA

Ground Rent: £0

EPC Energy Efficiency Rating: C

EPC Environmental Impact Rating: D

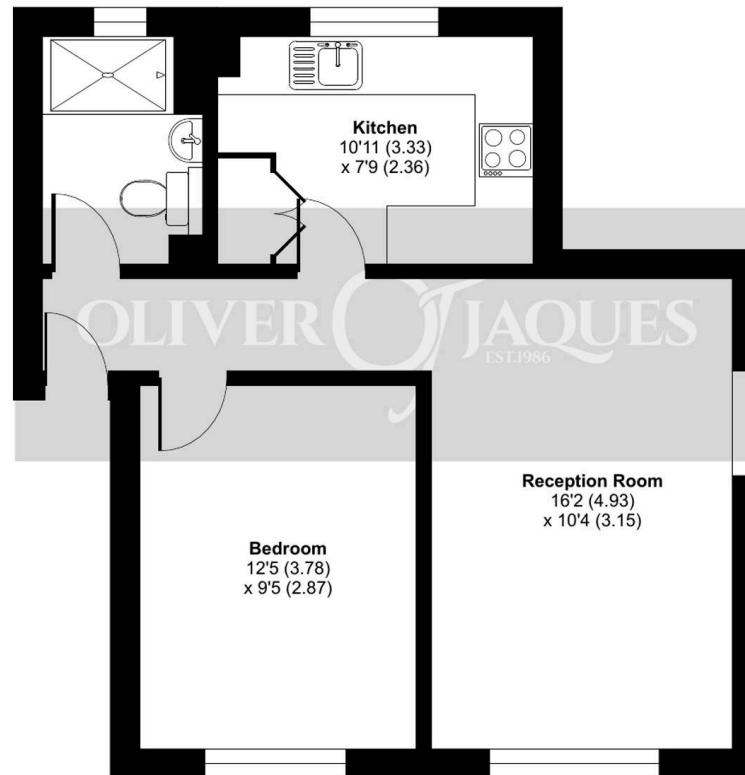
- One Bedroom
- Residents Permit for Parking
- New Cross Overground Station 1.1 Miles
- Surrey Quays Overground Station 0.9 Miles
- Close to Local Amenities



Grinstead Road, London, SE8

Approximate Area = 480 sq ft / 44.6 sq m

For identification only - Not to scale



FIRST FLOOR



Floor plan produced in accordance with RICS Property Measurement 2nd Edition, Incorporating International Property Measurement Standards (IPMS2 Residential). © nchecon 2025. Produced for Oliver Jaques. REF: 1302779



Oliver Jaques

Oliver Jaques, 229-231 Lower Road – SE16 2LW

02072315050 • southeast@o-j.co.uk • o-j.co.uk/

Every care has been taken with the preparation of this brochure but it is for general guidance and complete accuracy can't be guaranteed. Prospective purchasers should seek clarification from their solicitor. The mention of any appliances fixtures or fittings does not imply they are in working order.