



Greenland Mews, London
London

£540,000

OLIVER *OJ* JAQUES
EST. 1986

Greenland Mews

London

This two bedroom, mid-terrace house is located in the secure cul-de-sac Greenland Mews. The property offers secure entry-phone operated gates and is also within walking distance from Surrey Quays Overground station (0.6 miles) and South Bermondsey train station (0.9 miles) along with many bus routes.

The property comprises of two generous double en-suite bedrooms, a first floor reception room with patio doors leading to a private balcony and a modern fitted kitchen / diner.

Council Tax band: C

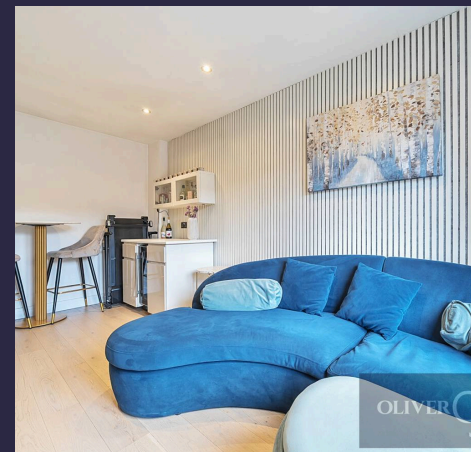
Tenure: Freehold

Rent/Estate Charge: £450 per annum paid in instalments semi-annually

EPC Energy Efficiency Rating: D

EPC Environmental Impact Rating: E

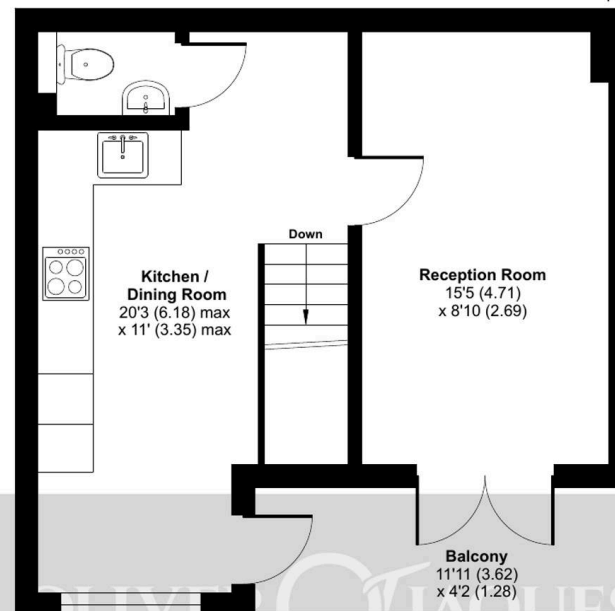
- Secure Gated Development
- Balcony
- Open Plan Kitchen
- 0.9 Miles to South Bermondsey Train Station
- 0.6 Miles to Surrey Quays Overground Station
- 76 Sq.Ft



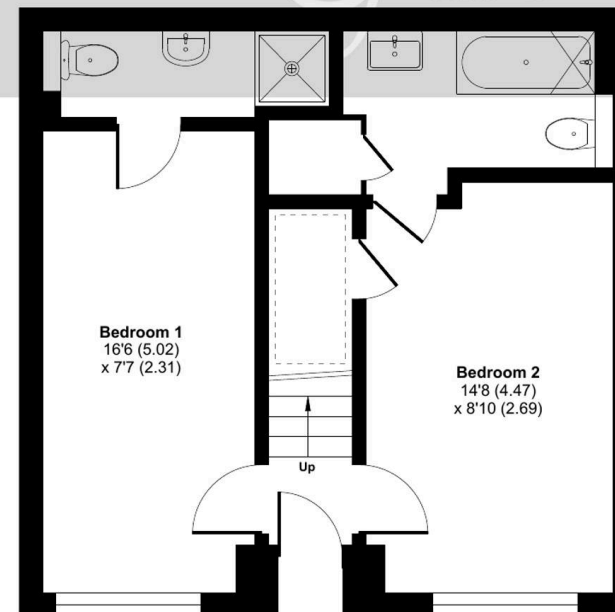
Greenland Mews, London, SE8

Approximate Area = 748 sq ft / 69.4 sq m

For identification only - Not to scale



FIRST FLOOR



GROUND FLOOR



Floor plan produced in accordance with RICS Property Measurement 2nd Edition, Incorporating International Property Measurement Standards (IPMS2 Residential). © n/checom 2025. Produced for Oliver Jaques. REF: 1301234



Oliver Jaques

Oliver Jaques, 229-231 Lower Road - SE16 2LW

02072315050 • southeast@o-j.co.uk • o-j.co.uk/

Every care has been taken with the preparation of this brochure but it is for general guidance and complete accuracy can't be guaranteed. Prospective purchasers should seek clarification from their solicitor. The mention of any appliances fixtures or fittings does not imply they are in working order.