



# London

OLIVER *OJ* JAQUES  
EST. 1986



# Tarplett House John Williams Close, London

Located in an intimate cul-de-sac on the site of a former football stadium, this naturally light, second floor apartment offers affordable accommodation 0.7 miles from both South Bermondsey station (mainline services) and 0.8 miles from New Cross Gate station (London Overground and mainline services).

Council Tax band: B

Tenure: Leasehold

Lease Length Remaining: 172 Years

Ground Rent: £0.00

Service Charge: **£1,958.78**

EPC Energy Efficiency Rating: C

EPC Environmental Impact Rating: C

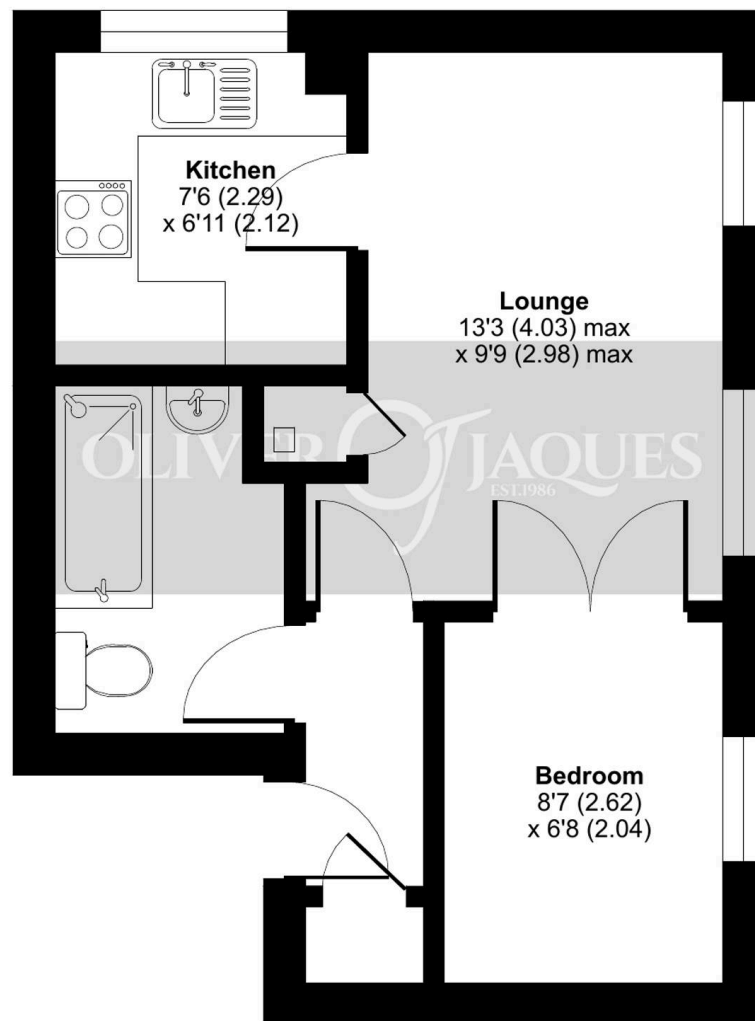
- New Cross Gate Overground Station 0.8 Miles
- South Bermondsey Train Station 0.7 Miles
- 321 Sq.Ft
- Off Street Permit Parking
- Studio



# John Williams Close, London, SE14

Approximate Area = 321 sq ft / 29.8 sq m

For identification only - Not to scale



**SECOND FLOOR**



Floor plan produced in accordance with RICS Property Measurement 2nd Edition, Incorporating International Property Measurement Standards (IPMS2 Residential). © n/checom 2025. Produced for Oliver Jaques. REF: 1296942





## Oliver Jaques

Oliver Jaques, 229-231 Lower Road – SE16 2LW

02072315050 • southeast@o-j.co.uk • o-j.co.uk/

Every care has been taken with the preparation of this brochure but it is for general guidance and complete accuracy can't be guaranteed. Prospective purchasers should seek clarification from their solicitor. The mention of any appliances fixtures or fittings does not imply they are in working order.