



Blick House, Neptune Street
London

£300,000
OLIVER *OJ* JAQUES
EST. 1986

Blick House, London

This one bedroom property presents an excellent opportunity for first-time buyers or investors. The location is ideal, boasting easy access to local shops, trendy cafes, and excellent transport links. The flat itself is in good condition, with a spacious living area, kitchen, bright bedroom and south facing balcony.

The development is close to the new regeneration of Canada Water –
<https://canadawater.co.uk/vision/masterplan/>

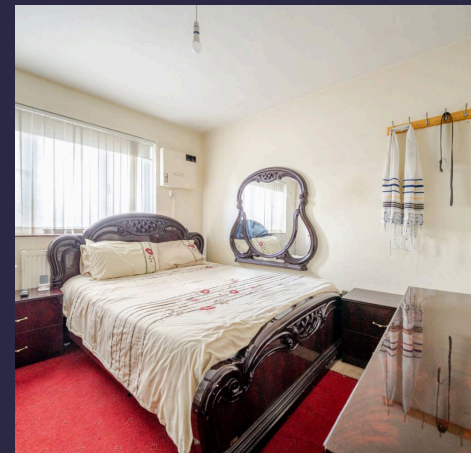
Council Tax band: A

Tenure: Leasehold

Lease Remaining: 114 Years

Service Charge: **£1709.00 PA**

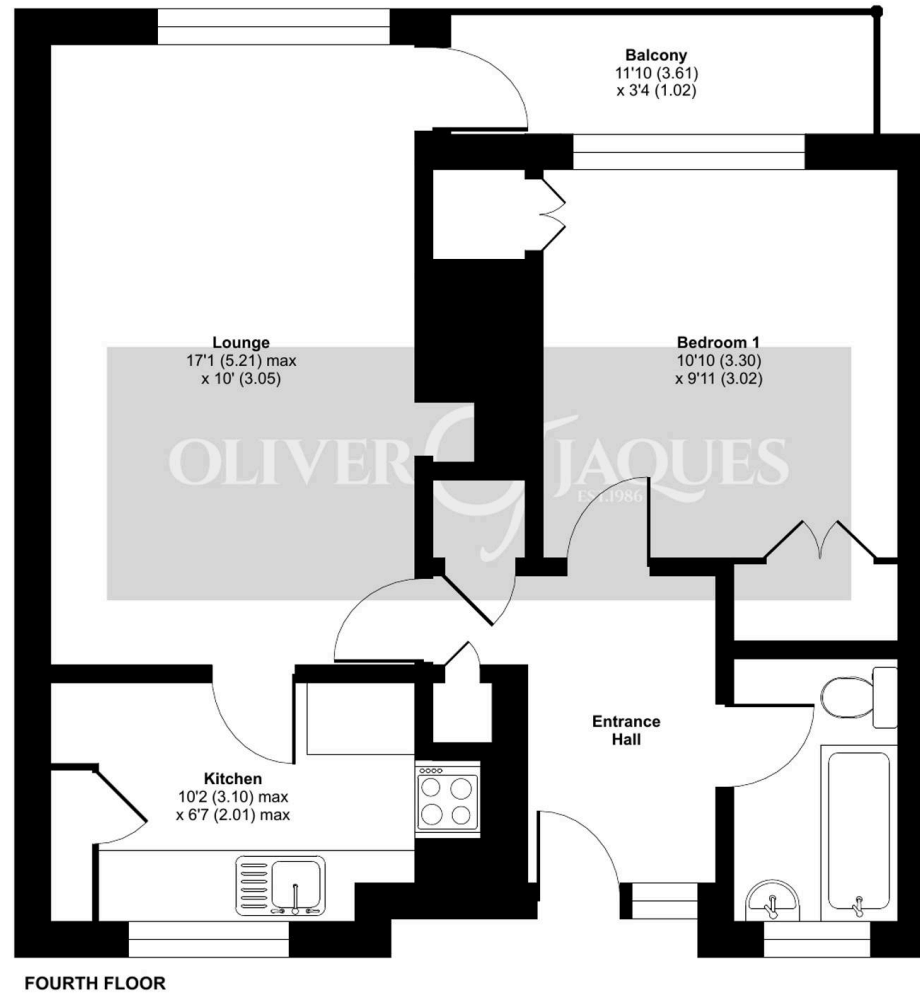
- 0.2 Miles to Canada Water Underground Station
- 0.3 Mile to Rotherhithe Underground Station
- Close to Local Amenities
- Balcony
- Bright and Spacious Living Area
- Close to Southwark Park



Blick House, Neptune Street, London, SE16

Approximate Area = 521 sq ft / 48.4 sq m

For identification only - Not to scale



Floor plan produced in accordance with RICS Property Measurement 2nd Edition, Incorporating International Property Measurement Standards (IPMS2 Residential). © n/cheom 2025. Produced for Oliver Jaques. REF: 1282539



Oliver Jaques

Oliver Jaques, 229-231 Lower Road – SE16 2LW

02072315050 • southeast@o-j.co.uk • o-j.co.uk/

Every care has been taken with the preparation of this brochure but it is for general guidance and complete accuracy can't be guaranteed. Prospective purchasers should seek clarification from their solicitor. The mention of any appliances fixtures or fittings does not imply they are in working order.