



Welsford Street, London  
London

Guide Price £385,000  
**OLIVER J AQUES**  
EST. 1986



# Welsford Street

London, London

This charming Victorian conversion is set in the heart of Bermondsey and presented to a high standard. Rich in character, the apartment features a sweeping staircase and period details throughout. The standout feature is the spacious reception room, which spans the full width of the property and is flooded with natural light from two sash-style windows.

Council Tax band: B

Tenure: Leasehold

Lease Remaining: 91 Years Remaining

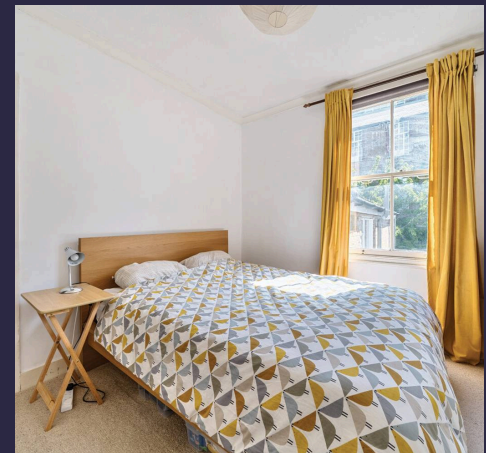
Service Charge: £790.19 PA

Ground Rent: £10 PA

EPC Energy Efficiency Rating: C

EPC Environmental Impact Rating: C

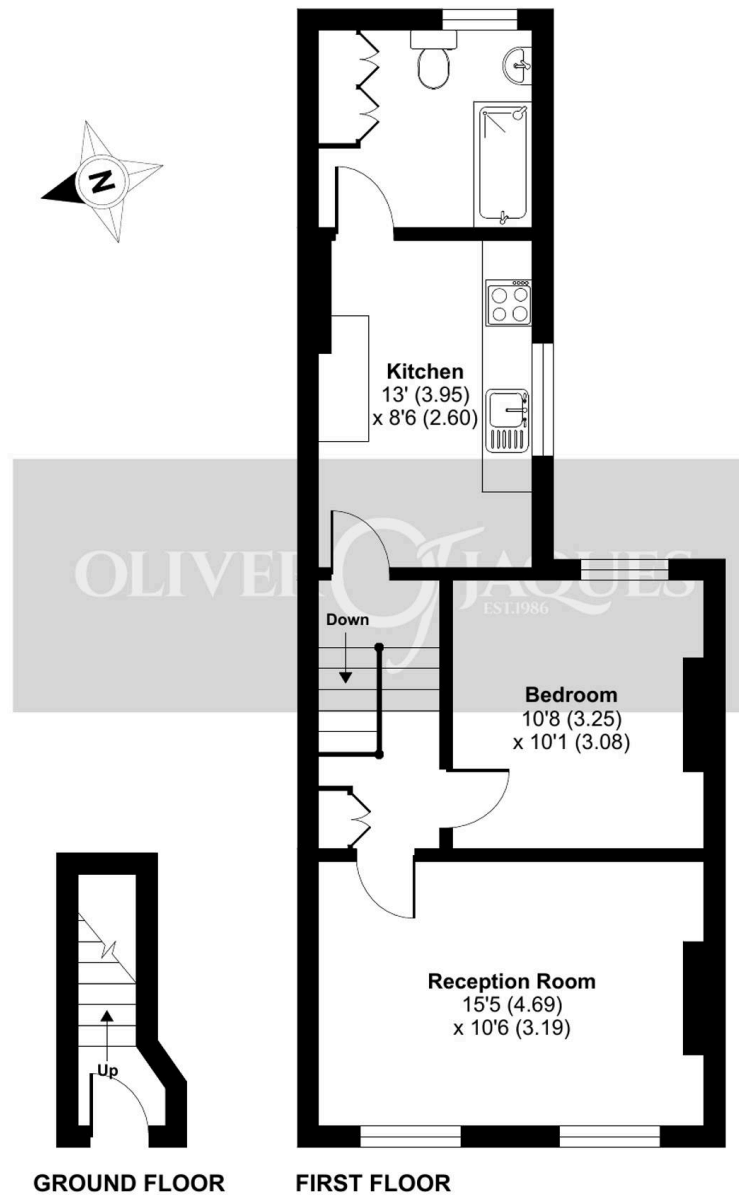
- Beautiful first floor Victorian conversion
- Spacious reception with two sash windows
- Kitchen/breakfast room
- Spacious double bedroom
- Thorburn Square conservation area
- Located in the heart of Bermondsey
- Bermondsey Station 0.6 miles (Jubilee Line/Zone 2)



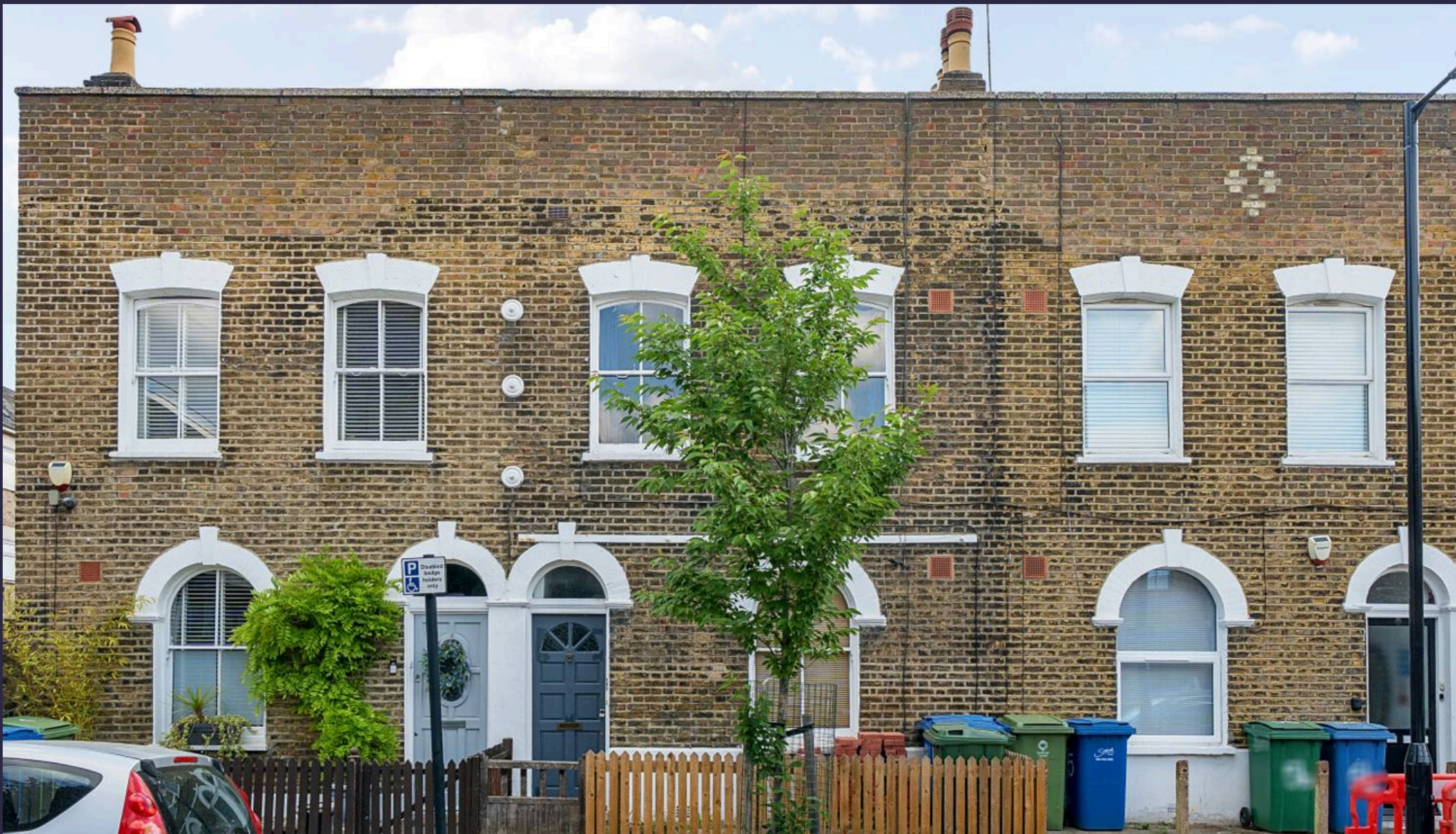
# Welsford Street, London, SE1

Approximate Area = 544 sq ft / 50.5 sq m

For identification only - Not to scale







## Oliver Jaques

Oliver Jaques, 229-231 Lower Road – SE16 2LW

02072315050 • southeast@o-j.co.uk • o-j.co.uk/

Every care has been taken with the preparation of this brochure but it is for general guidance and complete accuracy can't be guaranteed. Prospective purchasers should seek clarification from their solicitor. The mention of any appliances fixtures or fittings does not imply they are in working order.