



Rainbow Quay, Surrey Quays, London.
London

In Excess of £550,000

OLIVER *OJ* JIAQUES
EST. 1986

Rainbow Quay, London

A well located first floor apartment, offering westerly views across Greenland Dock from the spacious balcony.

Council Tax band: E

Tenure: Share of Freehold

EPC Energy Efficiency Rating: B

EPC Environmental Impact Rating: C

- Share Of Freehold
- Two Bed, Two Bath
- First Floor Apartment
- West-Facing Balcony
- Secure Underground Parking
- Water Views

Lease Expiry

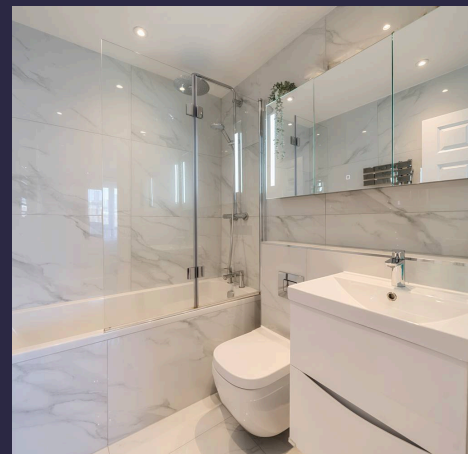
20/03/3024

Ground Rent

£0

Service Charge

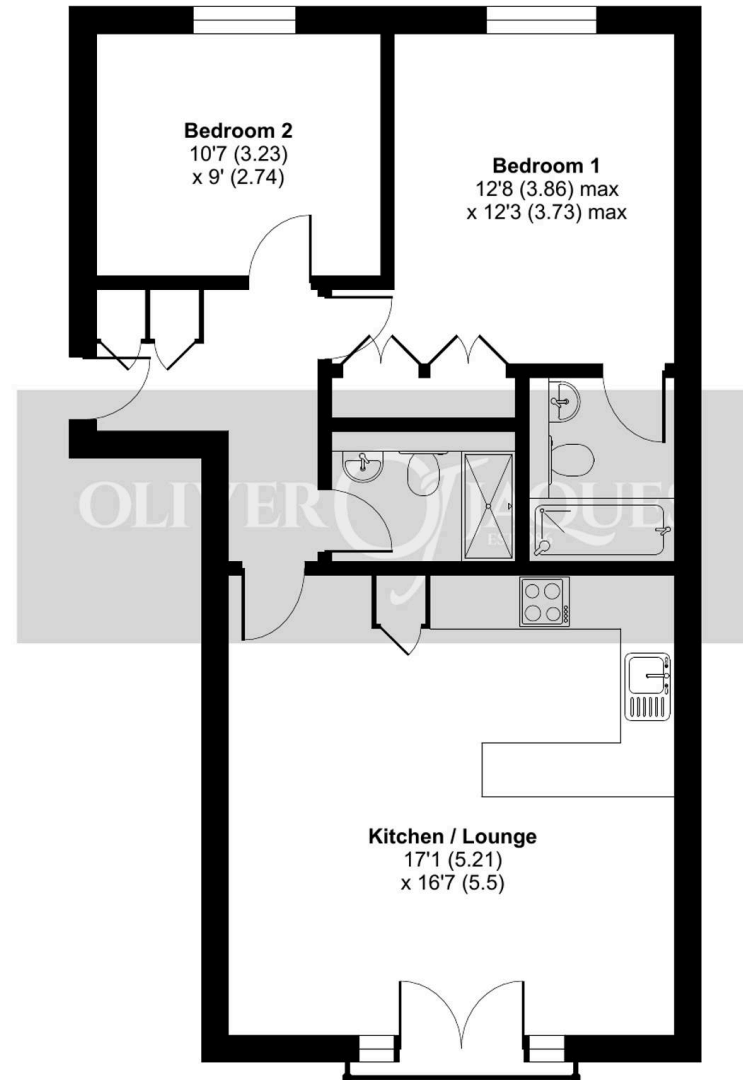
£2,765.58 per year



Rainbow Quay, London, SE16

Approximate Area = 688 sq ft / 64 sq m

For identification only - Not to scale



FIRST FLOOR



Floor plan produced in accordance with RICS Property Measurement 2nd Edition, Incorporating International Property Measurement Standards (IPMS2 Residential). © nchecon 2025. Produced for Oliver Jaques. REF: 1260890



Oliver Jaques

Oliver Jaques, 229-231 Lower Road - SE16 2LW

02072315050 • southeast@o-j.co.uk • o-j.co.uk/

Every care has been taken with the preparation of this brochure but it is for general guidance and complete accuracy can't be guaranteed. Prospective purchasers should seek clarification from their solicitor. The mention of any appliances fixtures or fittings does not imply they are in working order.