



Henley Close St. Marychurch Street, London
London

In Excess of £275,000

OLIVER *OJ* JIAQUES
EST. 1986

Henley Close St. Marychurch Street

London, London

An affordable opportunity has arisen to acquire a comfortable studio apartment within the winding cobbled streets of Rotherhithe's historic village ce...

Council Tax band: A

Tenure: Leasehold

EPC Energy Efficiency Rating: E

EPC Environmental Impact Rating: D

- One Bedroom Apartment
- 0.2 Miles From Rotherhithe Station
- 0.5 Miles From Canada Water Station
- High Decorative Order
- Double Glazed
- Rotherhithe Village

Tenure

Leasehold

Lease Expiry

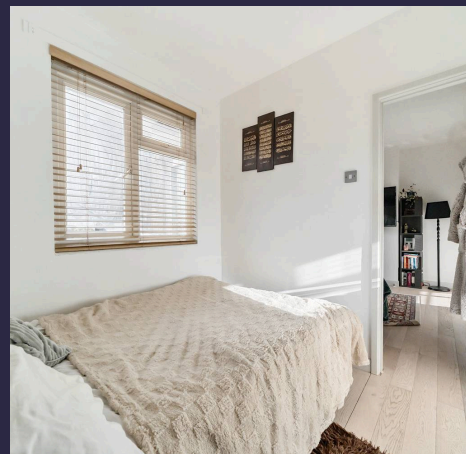
28/05/2115

Ground Rent

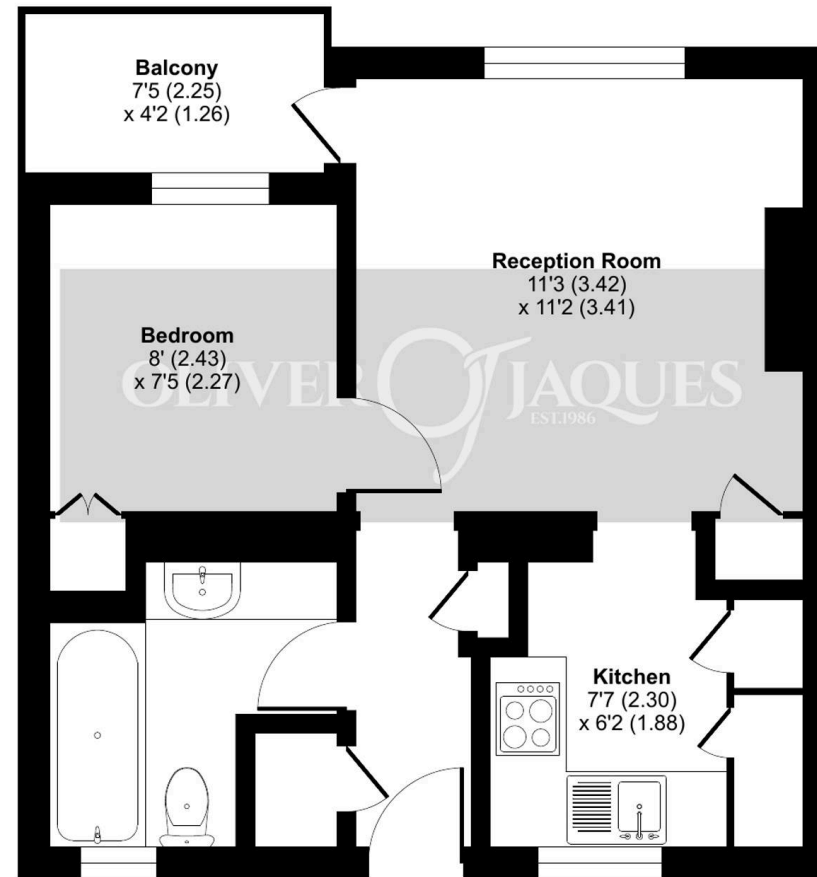
£5.00 per year

Service Charge

£1,600.00 per year



For identification only - Not to scale



Floor plan produced in accordance with RICS Property Measurement 2nd Edition,
Incorporating International Property Measurement Standards (IPMS2 Residential). © nichecom 2025.
Produced for Oliver Jaques. REF: 1268943



Oliver Jaques

Oliver Jaques, 229-231 Lower Road - SE16 2LW

02072315050 • southeast@o-j.co.uk • o-j.co.uk/

Every care has been taken with the preparation of this brochure but it is for general guidance and complete accuracy can't be guaranteed. Prospective purchasers should seek clarification from their solicitor. The mention of any appliances fixtures or fittings does not imply they are in working order.