



Commercial Road, London  
London

£550,000

OLIVER *OJ* JACQUES  
EST. 1986



## Commercial Road, London

A South facing two double bedrooms apartment, with views towards Canary Wharf. Covering over 900 SQFT, the flat is located in the sought after Zenith House, on the Limehouse Basin.

Council Tax band: F

Tenure: Leasehold

EPC Energy Efficiency Rating: C

EPC Environmental Impact Rating: C

- Two Bedroom Apartment
- En-Suite Bathroom
- Fourth Floor Apartment
- Secure Gated Parking
- South Facing Balcony
- Views Of Limehouse Basin

Lease Expiry - 31/03/2205

Ground Rent - £250 pa

Council Tax - Tower Hamlets London Borough

Council Band F £2,420.18 pa

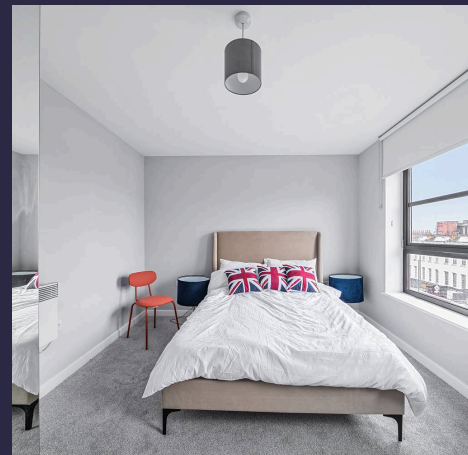
(The figures are for half year.)

Service Charge (for the block, the estate and the carpark) : £1,562.56

Insurance charge (for the block, the estate and the carpark) : £507.35

Contribution to reserve fund (sinking fund) : £238.16

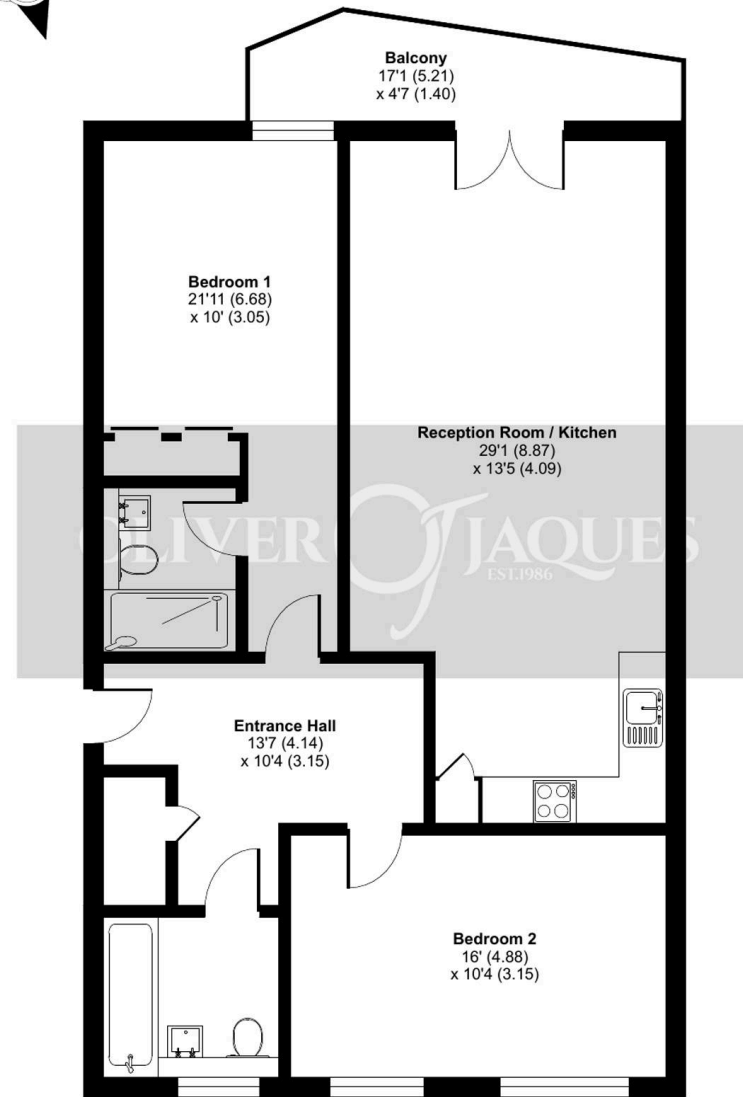
Total outgoings (for six month) : £2,308.07



# Commercial Road, London, E14

Approximate Area = 960 sq ft / 89.2 sq m

For identification only - Not to scale



FOURTH FLOOR



Floor plan produced in accordance with RICS Property Measurement 2nd Edition, Incorporating International Property Measurement Standards (IPMS2 Residential). © n/cheom 2025. Produced for Oliver Jaques. REF: 1241750





## Oliver Jaques

Oliver Jaques, 229-231 Lower Road - SE16 2LW

02072315050 • southeast@o-j.co.uk • o-j.co.uk/

Every care has been taken with the preparation of this brochure but it is for general guidance and complete accuracy can't be guaranteed. Prospective purchasers should seek clarification from their solicitor. The mention of any appliances fixtures or fittings does not imply they are in working order.