



Flat 10, 598 Commercial Road, London
London

£550,000

OLIVER *OJ* JACQUES
EST. 1986

Flat 10

598 Commercial Road, London

Council Tax band: F

Tenure: Leasehold

EPC Energy Efficiency Rating: C

EPC Environmental Impact Rating: C

- Two Bedroom Apartment
- En-Suite Bathroom
- Fourth Floor Apartment
- Secure Gated Parking
- South Facing Balcony
- Views Of Limehouse Basin

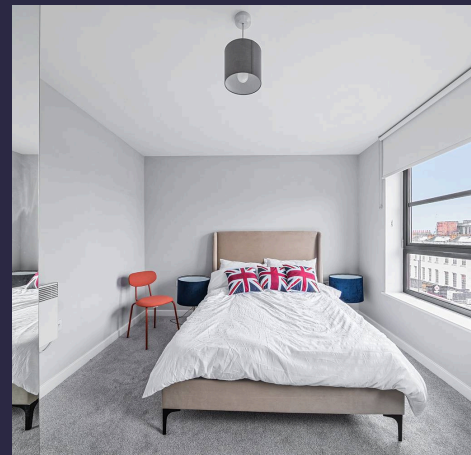
Lease Expiry - 31/03/2205

Ground Rent - £250 pa

Service Charge - **£3,222.98 pa**

Council Tax - Tower Hamlets London Borough

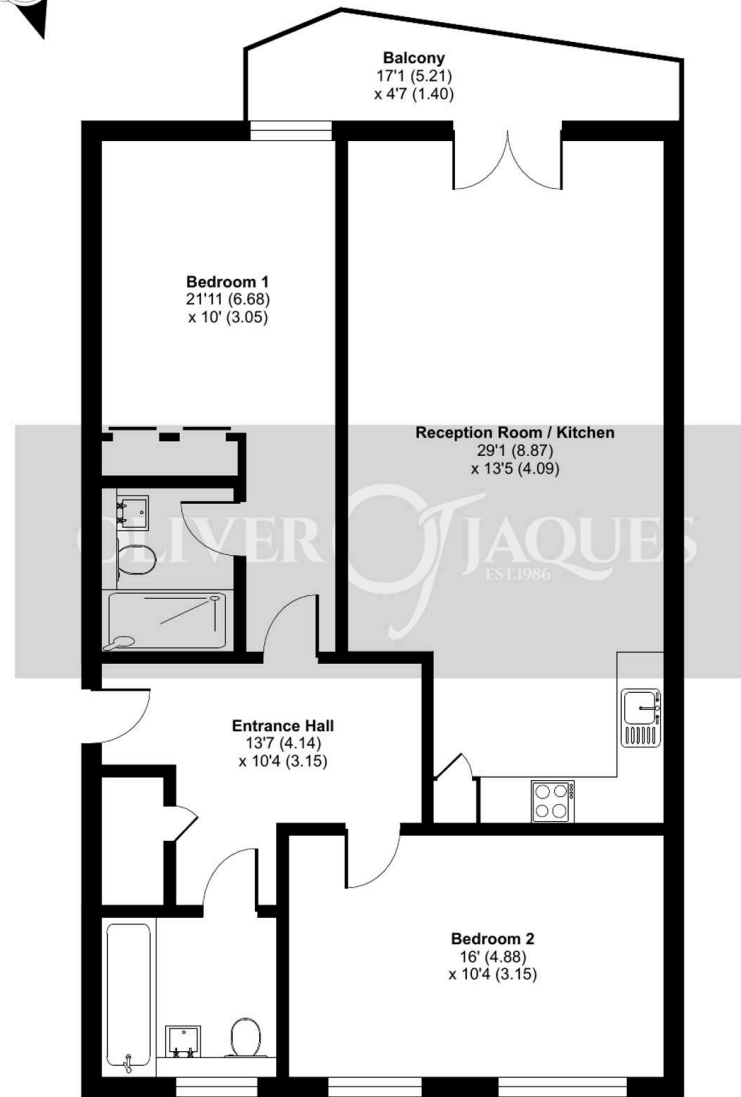
Council Band F £2,420.18 pa



Commercial Road, London, E14

Approximate Area = 960 sq ft / 89.2 sq m

For identification only - Not to scale



FOURTH FLOOR



Floor plan produced in accordance with RICS Property Measurement 2nd Edition, Incorporating International Property Measurement Standards (IPMS2 Residential). © n/cheom 2025. Produced for Oliver Jaques. REF: 1241750



Oliver Jaques

Oliver Jaques, 229-231 Lower Road - SE16 2LW

02072315050 • southeast@o-j.co.uk • o-j.co.uk/

Every care has been taken with the preparation of this brochure but it is for general guidance and complete accuracy can't be guaranteed. Prospective purchasers should seek clarification from their solicitor. The mention of any appliances fixtures or fittings does not imply they are in working order.