



Rotherhithe New Road, London
London

£725,000

OLIVER *OJ* JIAQUES
EST. 1986

Rotherhithe New Road

London, London

Located 0.3 miles from Surrey Quays Overground Station, this spacious three bedroomed house offers more than first meets the eye. The property lies on the edge of the well-used Southwark Park offering a wealth of outside opportunity as well as being a short walk from the re generation"Canada Water Masterplan including a new town centre as well as Surrey Quays, Canada Water, Bermondsey and South Bermondsey Nation Rail Stations, and the tranquillity of Greenland Dock.

Council Tax band: C

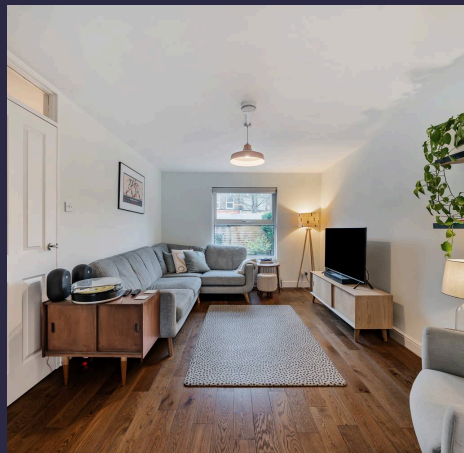
Tenure: Freehold

Service Charge: £2086pa

EPC Energy Efficiency Rating: C

EPC Environmental Impact Rating: D

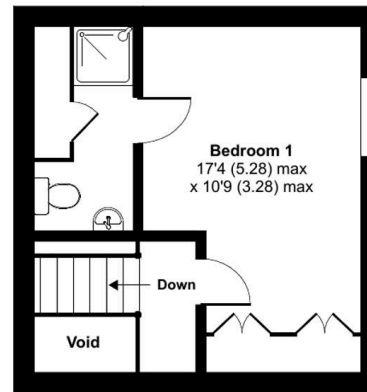
- Three Double Bedrooms, one with en-suite
- 1267 sq ft of accommodation over three floors
- Ground Floor W/C and bathroom
- Residents' Permit Parking
- Shared Communal Boiler
- Front and Rear Gardens
- 0.3 miles to Surrey Quays Overground (Zone 2)



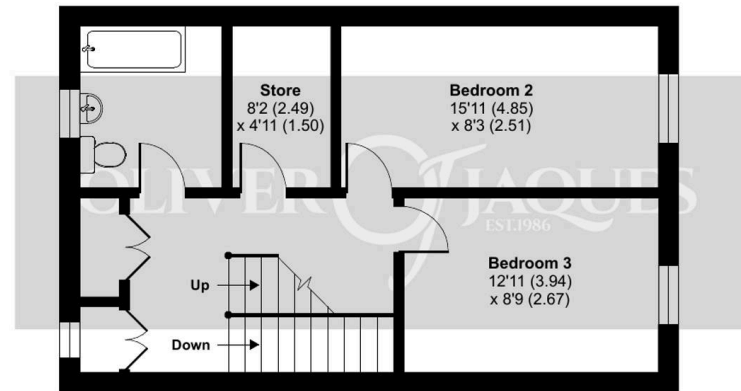
Rotherhithe New Road, London, SE16

Approximate Area = 1267 sq ft / 117.7 sq m

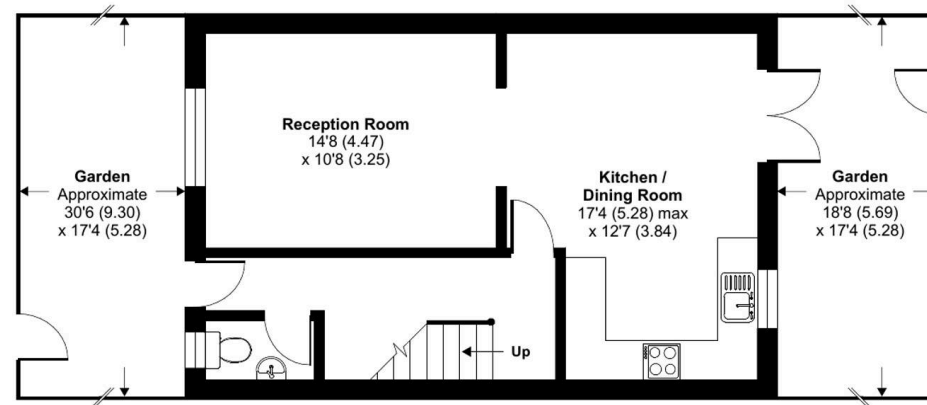
For identification only - Not to scale



SECOND FLOOR



FIRST FLOOR



GROUND FLOOR



Oliver Jaques

Oliver Jaques, 229-231 Lower Road - SE16 2LW

02072315050 • southeast@o-j.co.uk • o-j.co.uk/

Every care has been taken with the preparation of this brochure but it is for general guidance and complete accuracy can't be guaranteed. Prospective purchasers should seek clarification from their solicitor. The mention of any appliances fixtures or fittings does not imply they are in working order.