



16 Pump House Close, London
London

Fixed Price £1,400,000

OLIVER *O* JAQUES
EST. 1986

16 Pump House Close

London, London

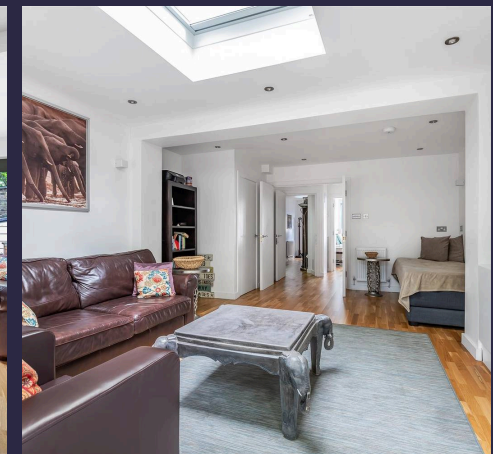
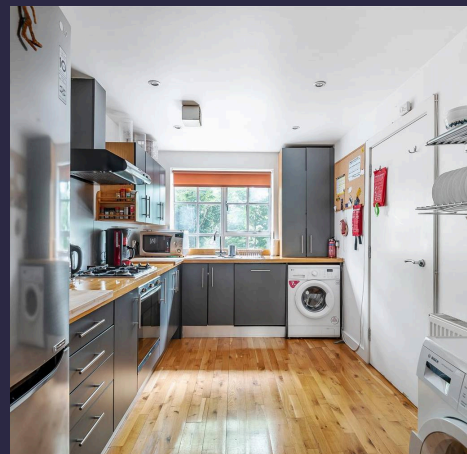
Spanning almost 1,800sqft, this immaculately presented four bedroom townhouse offers secure and convenient accommodation adjacent to Canada Water's...
Council Tax band: F

Tenure: Freehold

EPC Energy Efficiency Rating: C

EPC Environmental Impact Rating: C

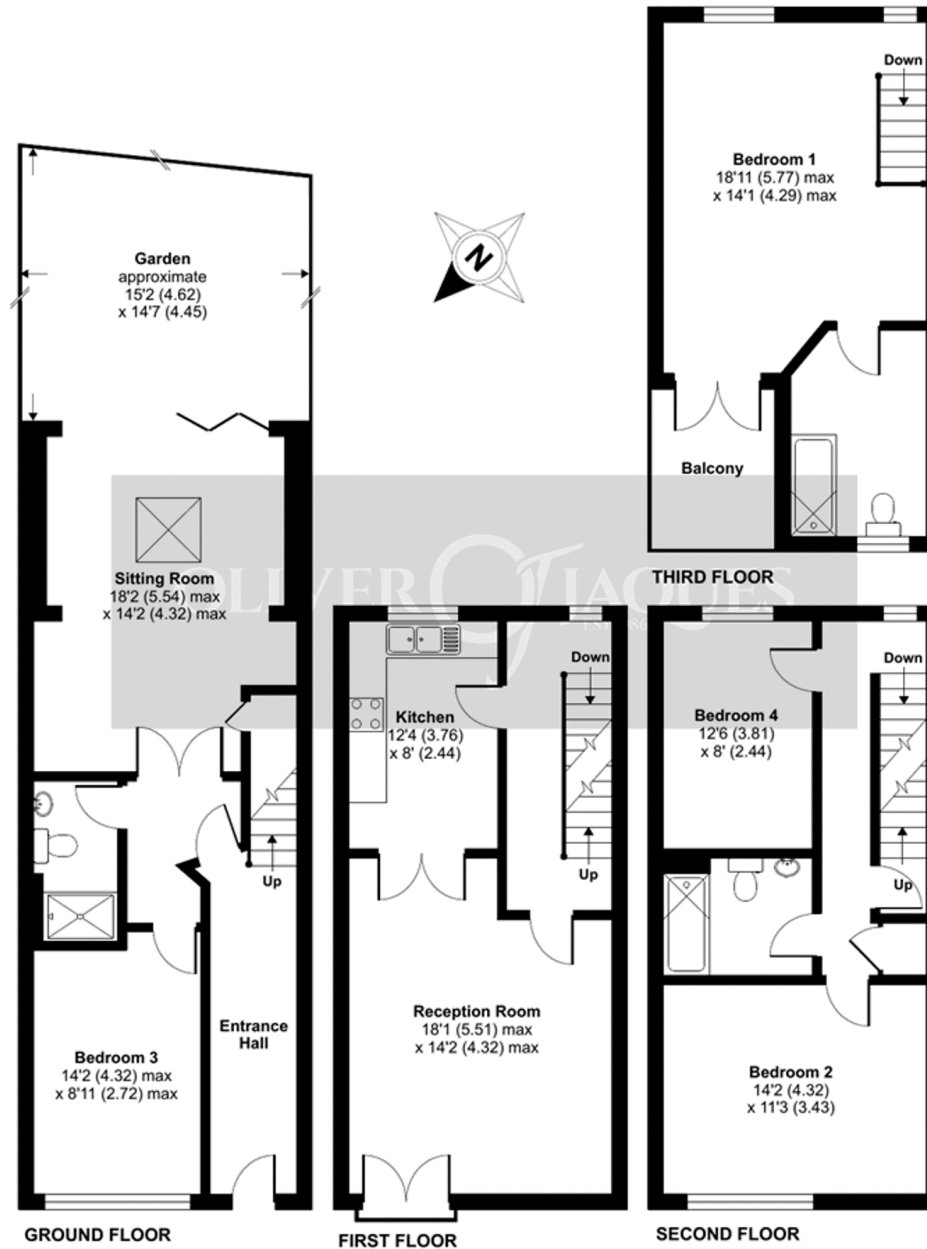
- Spanning almost 1,800sqft
- Four Bedroom Townhouse
- Secure Gated Residential Development
- Secure Parking
- Moments from Canada Water
- Close To The Thames Riverside and Local Green Spaces



Pump House Close, London, SE16

Total = 1778 sq ft / 165.2 sq m

For identification only - Not to scale



Floor plan produced in accordance with RICS Property Measurement Standards incorporating International Property Measurement Standards (IPMS2 Residential). © ncheom 2022. Produced for Oliver Jaques. REF: 852234



Oliver Jaques

Oliver Jaques, 229-231 Lower Road - SE16 2LW

02072315050 • southeast@o-j.co.uk • o-j.co.uk/

Every care has been taken with the preparation of this brochure but it is for general guidance and complete accuracy can't be guaranteed. Prospective purchasers should seek clarification from their solicitor. The mention of any appliances fixtures or fittings does not imply they are in working order.