



## Chantrelle Court Yeoman Street, London

London

In Excess of £510,000

OLIVER *OJ* JACQUES  
EST. 1986



## Chantrelle Court Yeoman Street, London

Two bedroom property in the heart of the Greenland Place development within easy reach of local amenities, including bars, restaurants and shops.

The property is presented in excellent decorative order and comprises a stylish open plan living area.

- Two Bedrooms
- Open Plan Living
- Communal Roof Terrace
- NHBC Warranty in place

Tenure - Leasehold

Lease Expiry - **05/12/2139**

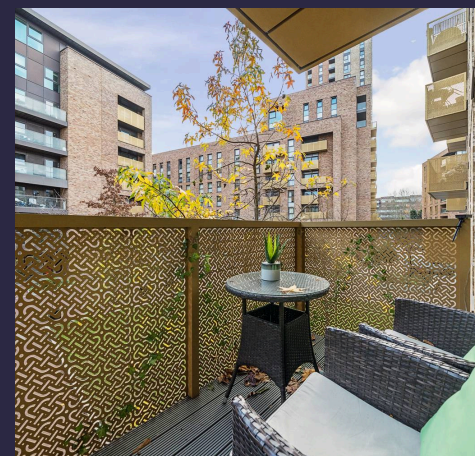
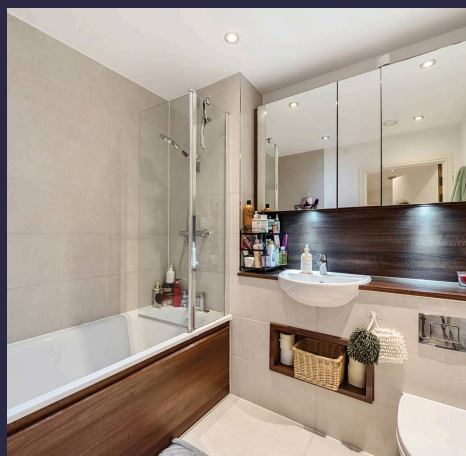
Ground Rent- **£100.00 per year**

Service Charge - **£3,612.00 per year**

Council Tax band: C

EPC Energy Efficiency Rating: B

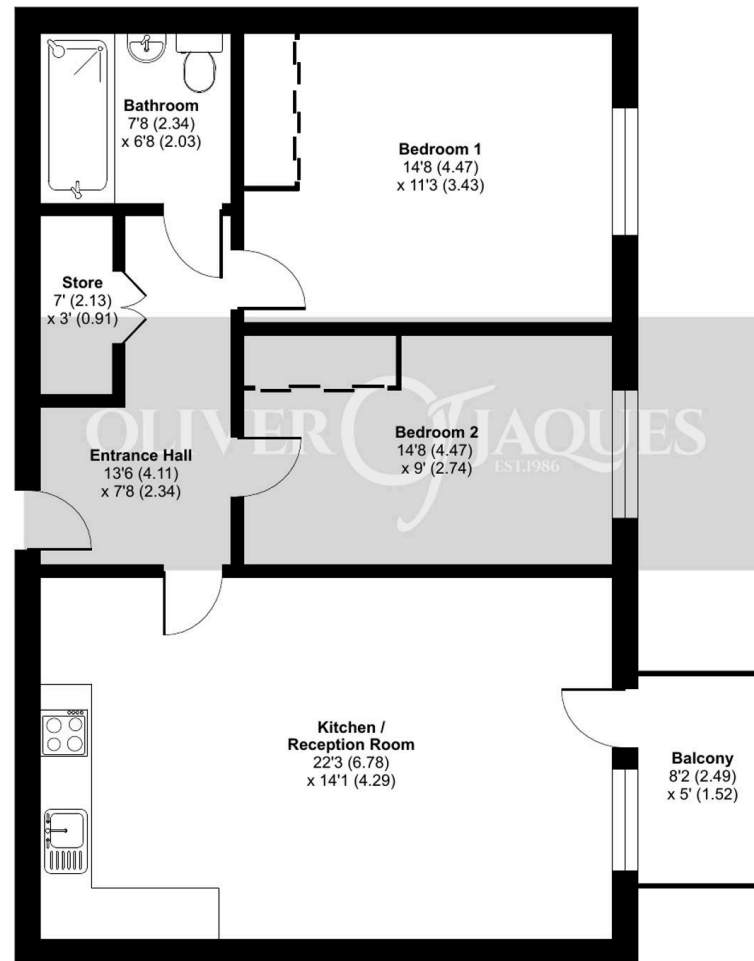
EPC Environmental Impact Rating: B



# Yeoman Street, London, SE8

Approximate Area = 798 sq ft / 74.1 sq m

For identification only - Not to scale



FIRST FLOOR



Floor plan produced in accordance with RICS Property Measurement 2nd Edition, Incorporating International Property Measurement Standards (IPMS2 Residential). © nchecon 2024. Produced for Oliver Jaques. REF: 1219768





## Oliver Jaques

Oliver Jaques, 229-231 Lower Road - SE16 2LW

02072315050 • southeast@o-j.co.uk • o-j.co.uk/

Every care has been taken with the preparation of this brochure but it is for general guidance and complete accuracy can't be guaranteed. Prospective purchasers should seek clarification from their solicitor. The mention of any appliances fixtures or fittings does not imply they are in working order.