



Harbourside Court, Gullivers Walk

London

Guide Price £575,000

OLIVER *OJ* JAQUES
EST. 1986

Harbourside Court, London

Substantial 3-Bedroom first-floor duplex flat with a secure entry system, private south facing balcony.

Council Tax band: D

Tenure: Leasehold

EPC Energy Efficiency Rating: B

EPC Environmental Impact Rating: A

- Private Balcony
- 993 Years Left Remaining On Lease
- Two Double Bedrooms
- Two Bathrooms
- Concierge/Porter Service
- Water and heating included in service charge
- Communal Gardens

Leasehold

Lease Expiry - 16/11/3017

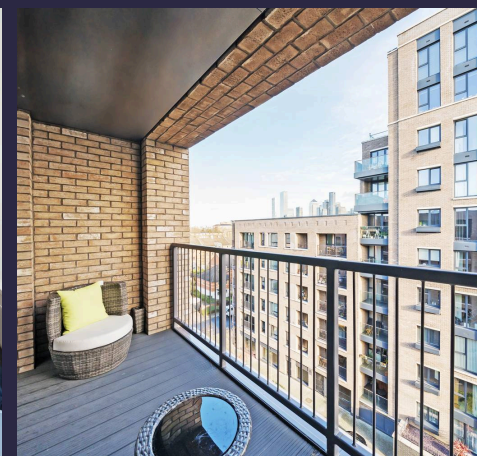
Ground Rent - £225.00 per year

Service Charge - £4,390.00 per year

Council Tax band: D

EPC Energy Efficiency Rating: B

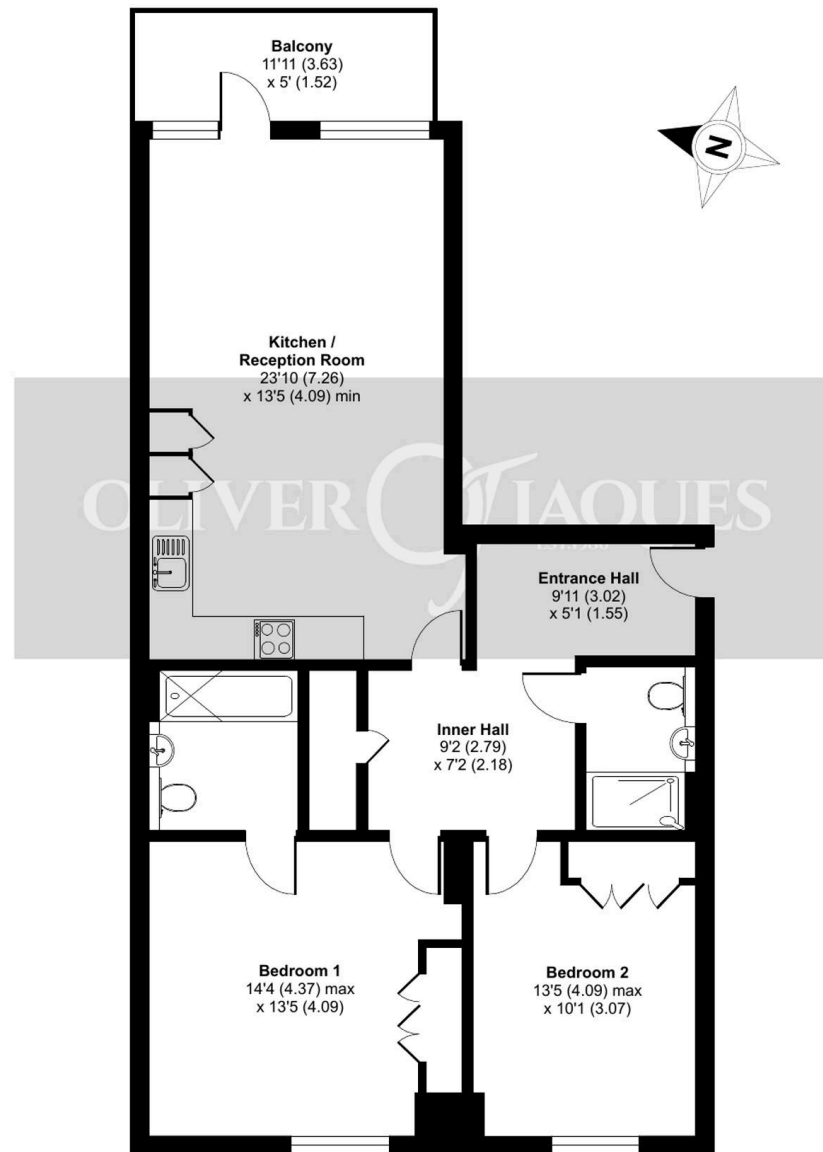
EPC Environmental Impact Rating: A



Gullivers Walk, London, SE8

Approximate Area = 929 sq ft / 86.3 sq m

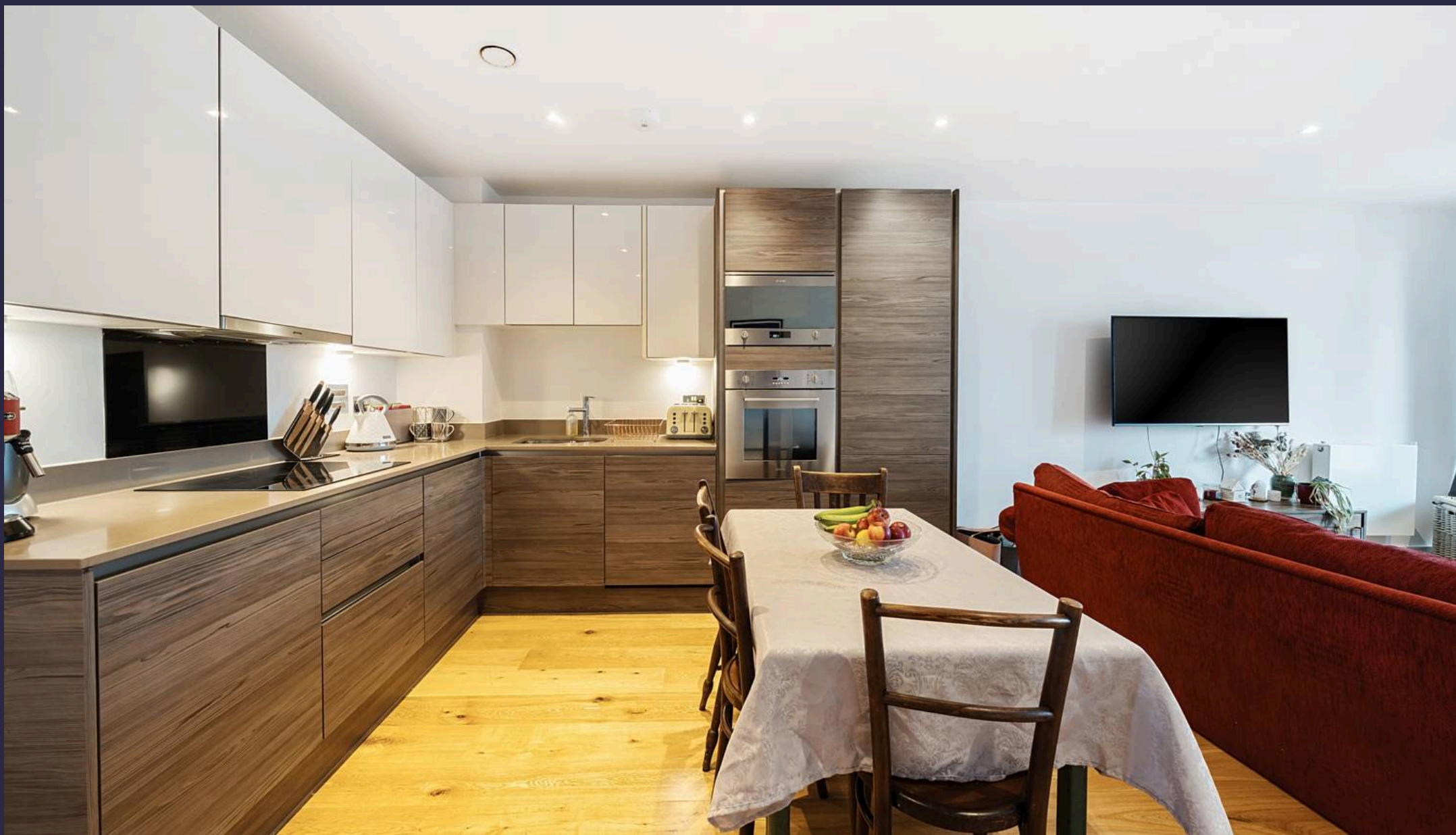
For identification only - Not to scale



FIFTH FLOOR



Floor plan produced in accordance with RICS Property Measurement 2nd Edition, Incorporating International Property Measurement Standards (IPMS2 Residential). © nchecon 2024. Produced for Oliver Jaques. REF: 1217191



Oliver Jaques

Oliver Jaques, 229-231 Lower Road - SE16 2LW

02072315050 • southeast@o-j.co.uk • o-j.co.uk/

Every care has been taken with the preparation of this brochure but it is for general guidance and complete accuracy can't be guaranteed. Prospective purchasers should seek clarification from their solicitor. The mention of any appliances fixtures or fittings does not imply they are in working order.