



Flat 26, Tideway Court, 238 Rotherhithe Street

London

£450,000





## Flat 26

Tideway Court, London

A light spacious 1st floor apartment situated in this secure modern purpose-built development. Located on the ever-Popular Rotherhithe Street, SE16.

The apartment boasts modern recently fitted kitchen and bathroom, two equal sized double bedrooms and Juliet Balcony overlooking Mayflower Park. It also benefits from secure allocated parking, located just Infront of the entrance gate.

Positioned within short walking distance of major bus routes and Rotherhithe village and overground station and approximately two thirds of a mile from Canada Water Jubilee line station, leading from Stratford to green Park/Bond Street, giving easy access to both Canary Wharf and the West End.

Council Tax band: D

Tenure: Leasehold

EPC Energy Efficiency Rating: B

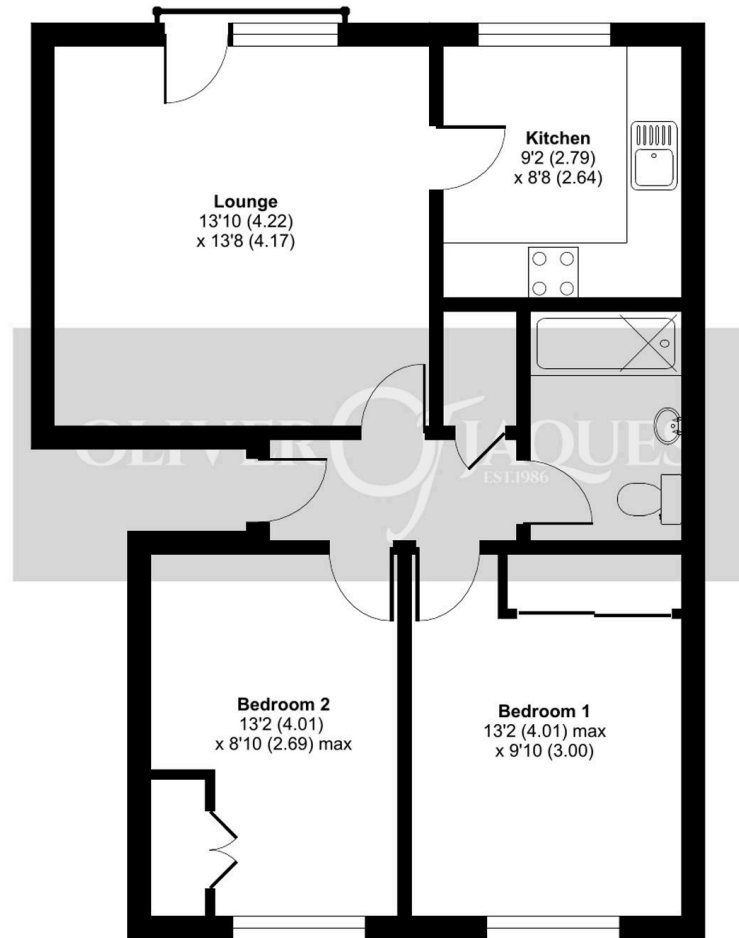
EPC Environmental Impact Rating: C

- 92 years remaining on the lease
- £100 PA Ground Rent
- £4,059.26 PA Service Charge

# Rotherhithe Street, London, SE16

Approximate Area = 640 sq ft / 59.4 sq m

For identification only - Not to scale



FIRST FLOOR



Floor plan produced in accordance with RICS Property Measurement Standards incorporating International Property Measurement Standards (IPMS2 Residential). © nchecon 2024. Produced for Oliver Jaques. REF: 1196092





## Oliver Jaques

Oliver Jaques, 229-231 Lower Road - SE16 2LW

02072315050 • southeast@o-j.co.uk • o-j.co.uk/

Every care has been taken with the preparation of this brochure but it is for general guidance and complete accuracy can't be guaranteed. Prospective purchasers should seek clarification from their solicitor. The mention of any appliances fixtures or fittings does not imply they are in working order.