



Goldsworthy Gardens, Surrey Quays, London

London

Offers in excess of £425,000

OLIVER *OJ* JAQUES
EST. 1986

Goldsworthy Gardens, Surrey Quays, London

Spacious and immaculately presented second floor two double bedroom apartment situated within this modern development in the heart of Surrey Quays.

- Two Double Bedrooms
- Private Balcony
- Spacious Reception Room

Leasehold

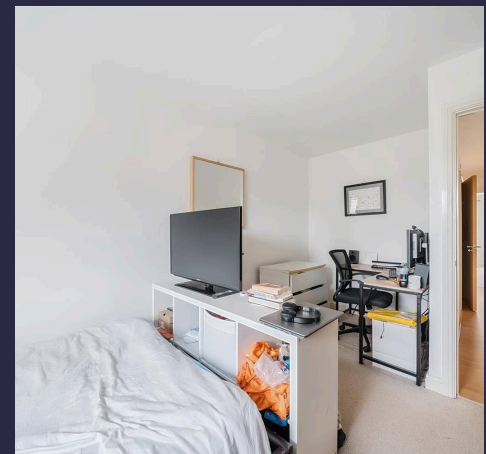
Lease expires 01/12/2132

Service Charge £1946.52 per annum

Council Tax band: C

EPC Energy Efficiency Rating: B

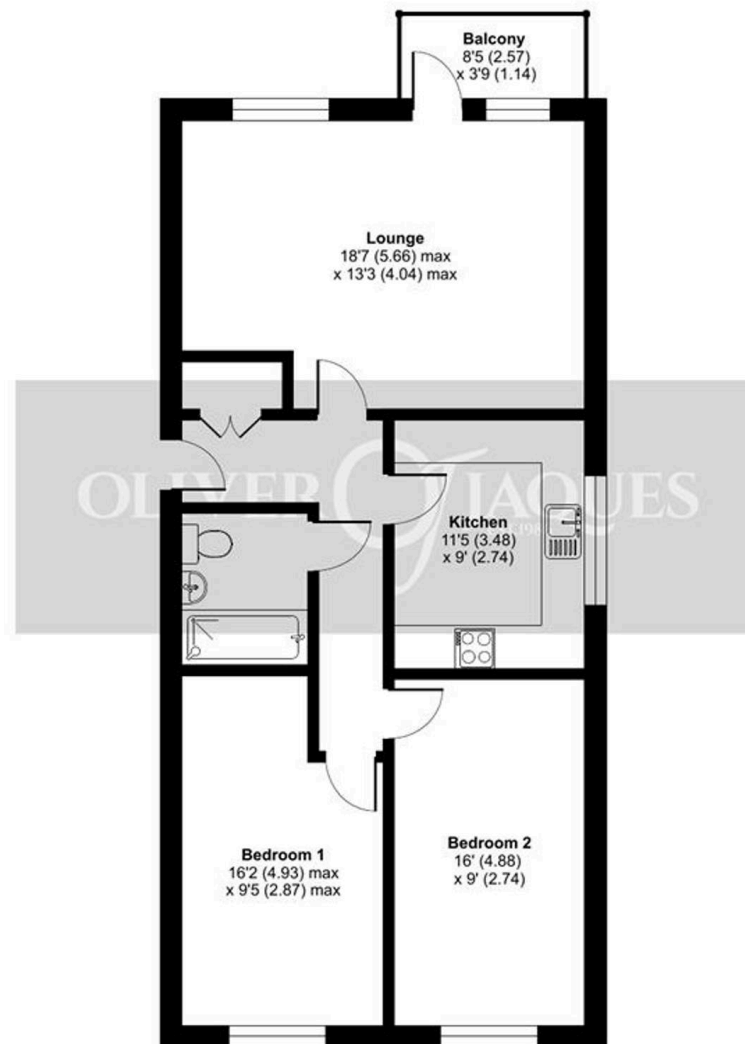
EPC Environmental Impact Rating: B



Goldsworthy Gardens, Surrey Quays, London, SE16

Approximate Area = 780 sq ft / 72.4 sq m

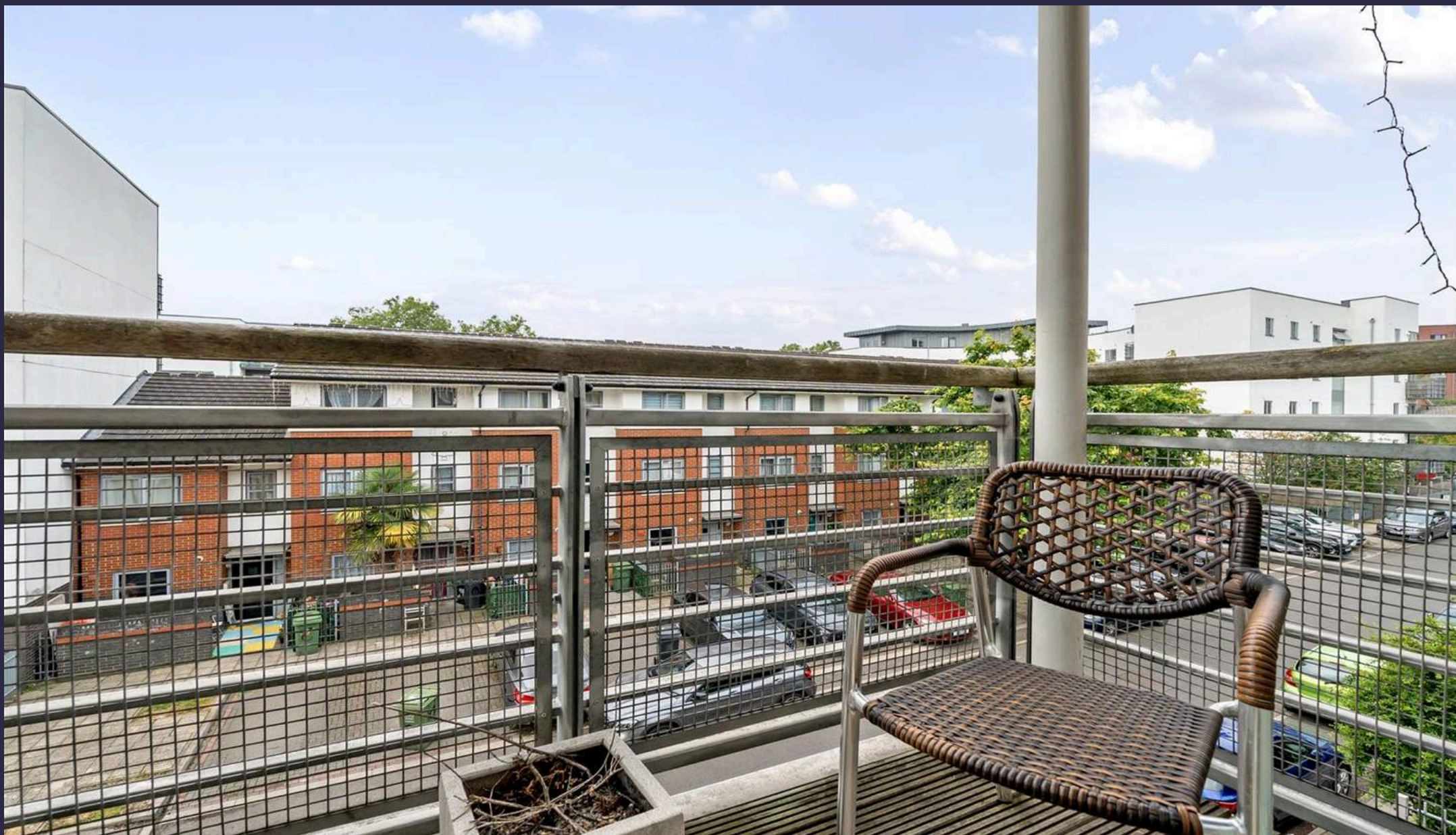
For identification only - Not to scale



SECOND FLOOR



Floor plan produced in accordance with RICS Property Measurement Standards incorporating International Property Measurement Standards (IPMS2 Residential). © nîcheom 2023. Produced for Oliver Jaques. REF: 1166032



Oliver Jaques

Oliver Jaques, 229-231 Lower Road - SE16 2LW

02072315050 • southeast@o-j.co.uk • o-j.co.uk/

Every care has been taken with the preparation of this brochure but it is for general guidance and complete accuracy can't be guaranteed. Prospective purchasers should seek clarification from their solicitor. The mention of any appliances fixtures or fittings does not imply they are in working order.