



Rotherhithe New Road, London

London

£600,000

OLIVER *OJ* JAQUES  
EST. 1986

# Rotherhithe New Road

London

An exquisite example of a duplex apartment forming a large section of this traditional London Town House with private rear garden, located just 0.2 miles from Surrey Quays Station

- Stunning Duplex style apartment
- Spacious reception room
- Popular Surrey Quays location
- Modern kitchen with Island and bi-folding doors
- Private garden

## TENURE

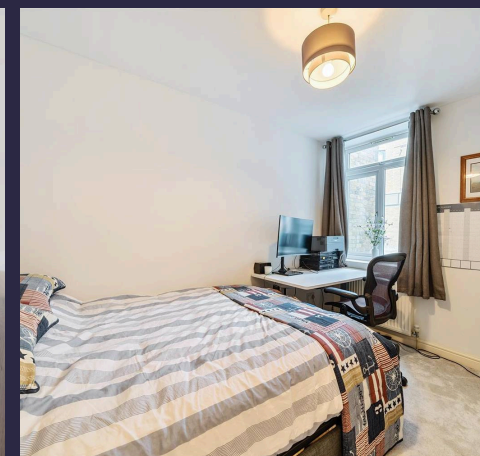
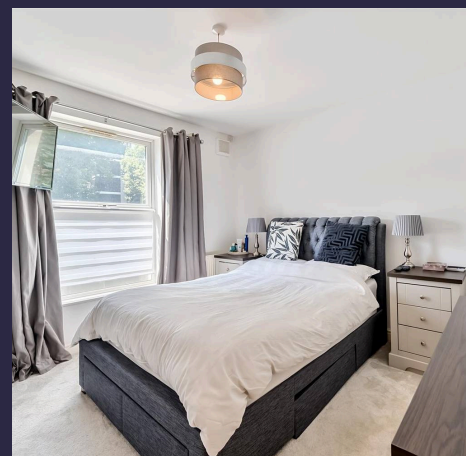
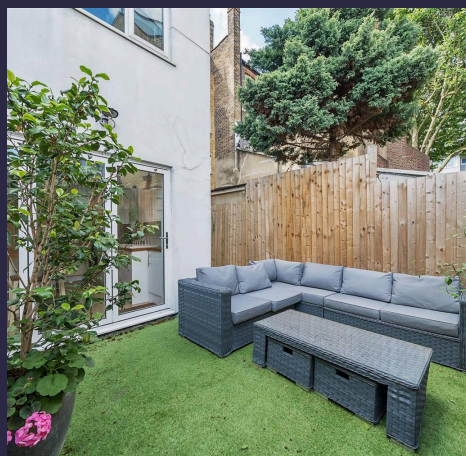
- Leasehold
- Lease expires 30/10/2142
- Service Charge - Works agreed with the other flat when required

Council Tax band: C

Tenure: Leasehold

EPC Energy Efficiency Rating: C

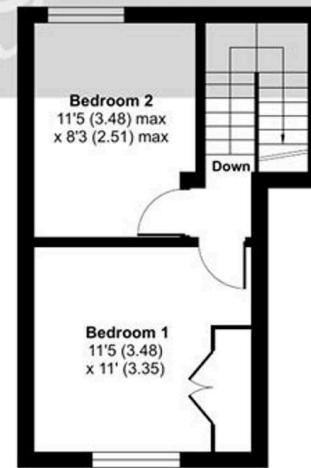
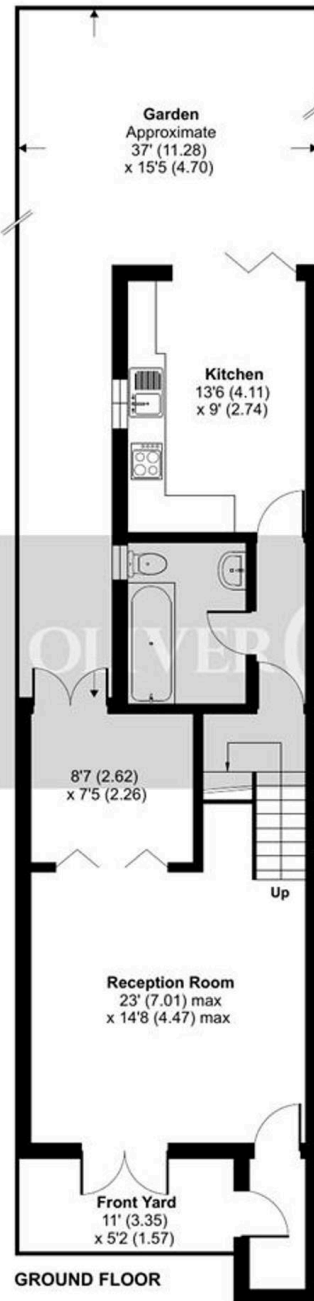
EPC Environmental Impact Rating: B



# Rotherhithe New Road, London, SE16

Approximate Area = 873 sq ft / 81.1 sq m

For identification only - Not to scale



Floor plan produced in accordance with RICS Property Measurement Standards incorporating International Property Measurement Standards (IPMS2 Residential). © n7cheom 2024. Produced for Oliver Jaques. REF: 1159240



## Oliver Jaques

Oliver Jaques, 229-231 Lower Road - SE16 2LW

02072315050 • southeast@o-j.co.uk • o-j.co.uk/

Every care has been taken with the preparation of this brochure but it is for general guidance and complete accuracy can't be guaranteed. Prospective purchasers should seek clarification from their solicitor. The mention of any appliances fixtures or fittings does not imply they are in working order.