



Greenland Mews, London

London

£625,000 - £650,000

OLIVER *OJ* JAQUES
EST. 1986

14 Greenland Mews

London, London

GUIDE PRICE £625,000 – £650,000 Spanning over 1,100sqft, this substantial four bedroom mews house complete with rear garden and double driveway offers...

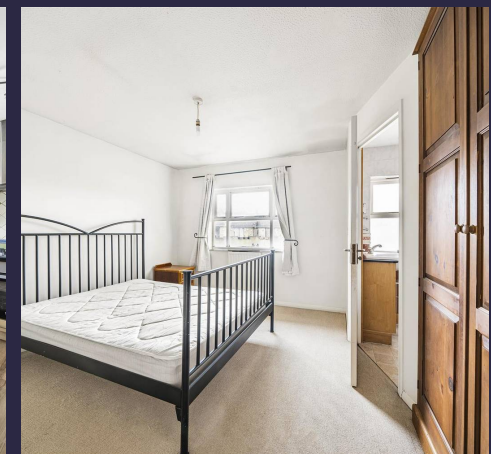
Council Tax band: D

Tenure: Freehold

EPC Energy Efficiency Rating: C

EPC Environmental Impact Rating: D

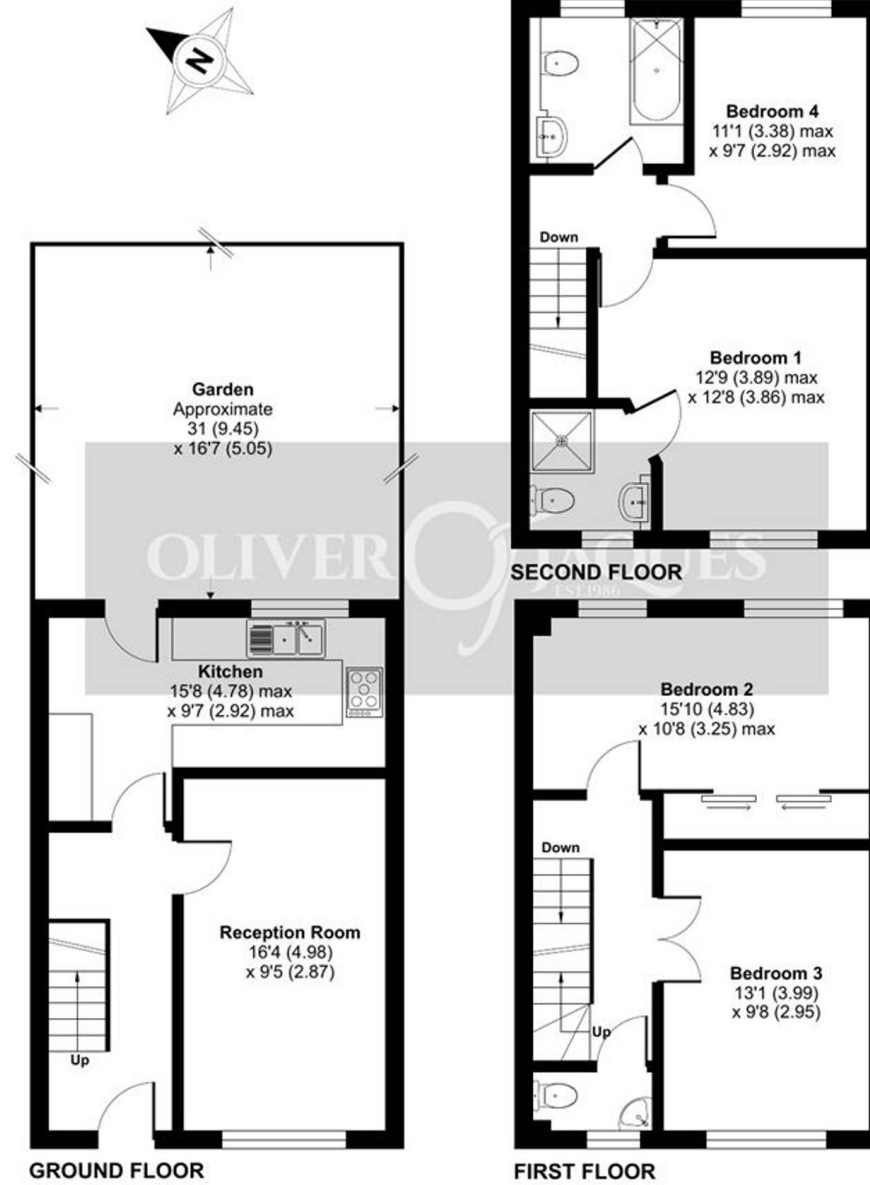
- Four Double Bedrooms
- Two Bathrooms
- Private Rear Garden
- Front Reception Room
- Separate Kitchen
- Entry-com Controlled Gates / Secure Mews



Greenland Mews, London, SE8

Approximate Area = 1125 sq ft / 104.5 sq m

For identification only - Not to scale



Floor plan produced in accordance with RICS Property Measurement Standards incorporating International Property Measurement Standards (IPMS2 Residential). © nichecom 2023. Produced for Oliver Jaques. REF: 984194



Oliver Jaques

Oliver Jaques, 229-231 Lower Road - SE16 2LW

02072315050 • southeast@o-j.co.uk • o-j.co.uk/

Every care has been taken with the preparation of this brochure but it is for general guidance and complete accuracy can't be guaranteed. Prospective purchasers should seek clarification from their solicitor. The mention of any appliances fixtures or fittings does not imply they are in working order.