



5 Brewhouse Walk, London
London

£700,000

OLIVER *OJ* JAQUES
EST. 1986

5 Brewhouse Walk

London, London

Located in the regeneration area of Canada Water, situated between Canary Wharf and Bermondsey on the South side of the river, is this well presented...

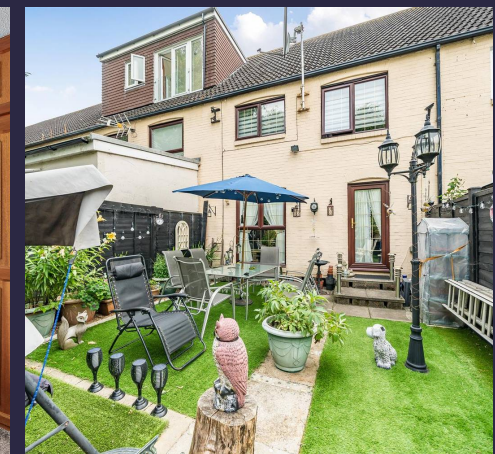
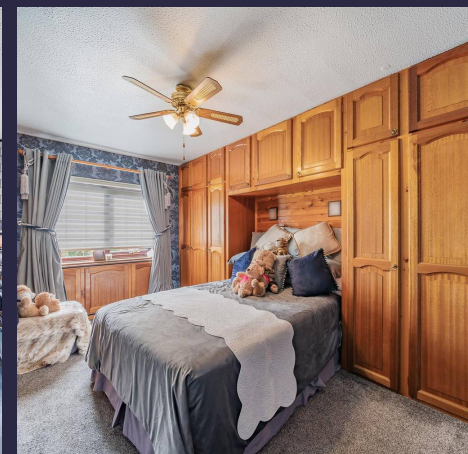
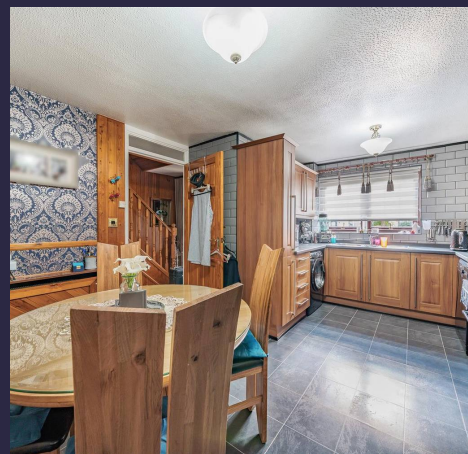
Council Tax band: D

Tenure: Freehold

EPC Energy Efficiency Rating: C

EPC Environmental Impact Rating: C

- KITCHEN/BREAKFAST ROOM
- VIEWING HIGHLY RECOMMENDED
- SPACIOUS THREE DOUBLE BEDROOM HOUSE
- POPULAR RESIDENTIAL AREA
- POTENTIAL TO EXTEND (SUBJECT TO PLANNING PERMISSION)
- RECEPTION ROOM OVERLOOKING THE REAR GARDEN
- SERVICE CHARGE £2683 PER ANNUM TO INCLUDE HEATING CHARGES



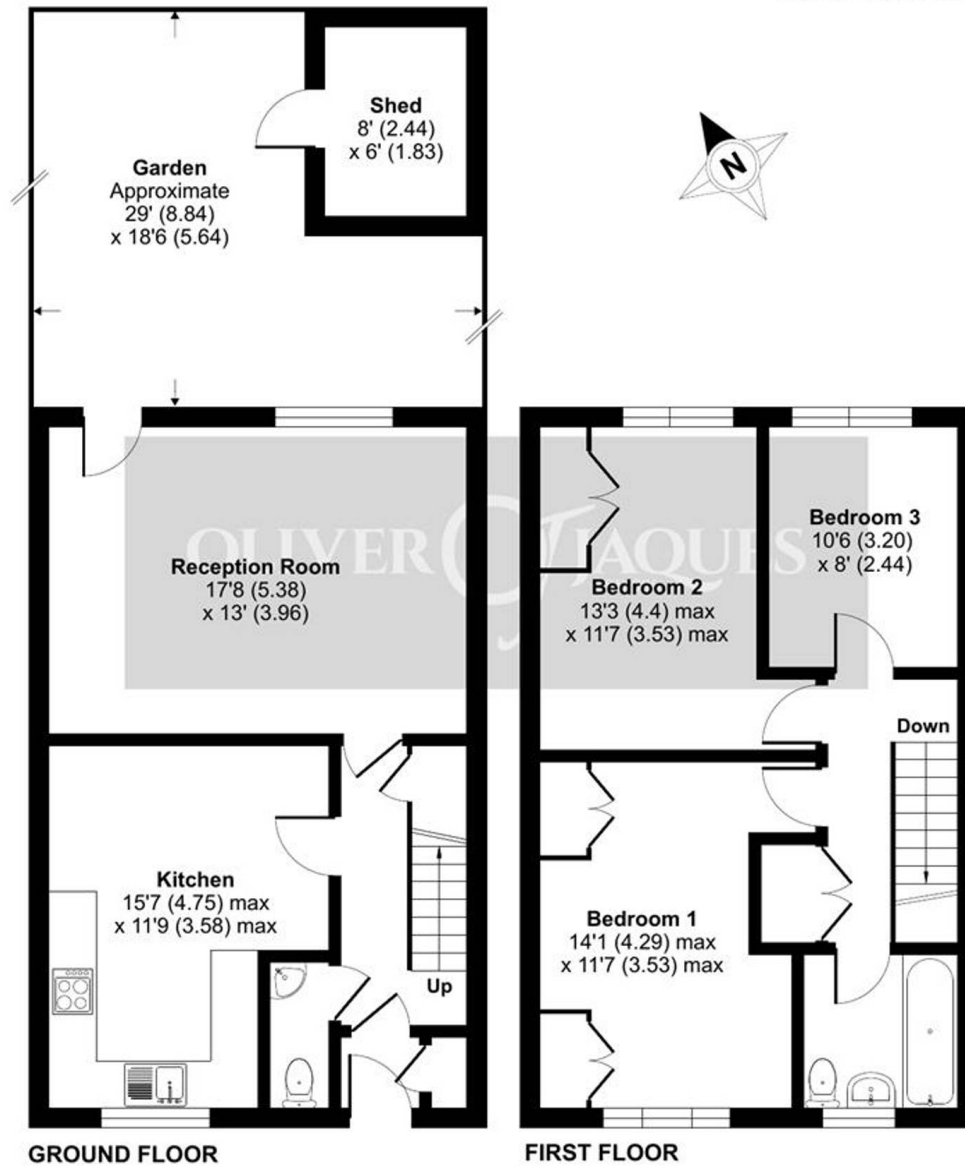
Brewhouse Walk, London, SE16

Approximate Area = 1018 sq ft / 94.5 sq m

Outbuilding = 48 sq ft / 4.4 sq m

Total = 1066 sq ft / 99 sq m

For identification only - Not to scale



Floor plan produced in accordance with RICS Property Measurement Standards incorporating International Property Measurement Standards (IPMS2 Residential). © nichecom 2024. Produced for Oliver Jaques. REF: 1162657



Oliver Jaques

Oliver Jaques, 229-231 Lower Road - SE16 2LW

02072315050 • southeast@o-j.co.uk • o-j.co.uk/

Every care has been taken with the preparation of this brochure but it is for general guidance and complete accuracy can't be guaranteed. Prospective purchasers should seek clarification from their solicitor. The mention of any appliances fixtures or fittings does not imply they are in working order.