



Flat 23, Tower Walk, 3 Leroy Street
London

Guide Price **£340,000**

OLIVER O'JAQUES
EST. 1986

Flat 23

Tower Walk, London

GUIDE PRICE £340,000 – £350,000 ONE BEDROOM apartment with PARKING. Located equidistant between Elephant and Castle station (Northern/Bakerloo Line) Zone 1+2 and Borough Station (Nor...

Council Tax band: B

Tenure: Leasehold

EPC Energy Efficiency Rating: C

EPC Environmental Impact Rating: D

- Secure Entry System
- Second Floor
- Off Street Gated Parking
- Close to Transport
- One Bedroom Apartment
- Close to Amenities

- Tenure : Leasehold
- Lease Expires : 26/06/2116
- Ground Rent : £150 pa
- Service Charge : £1,996.96 pa

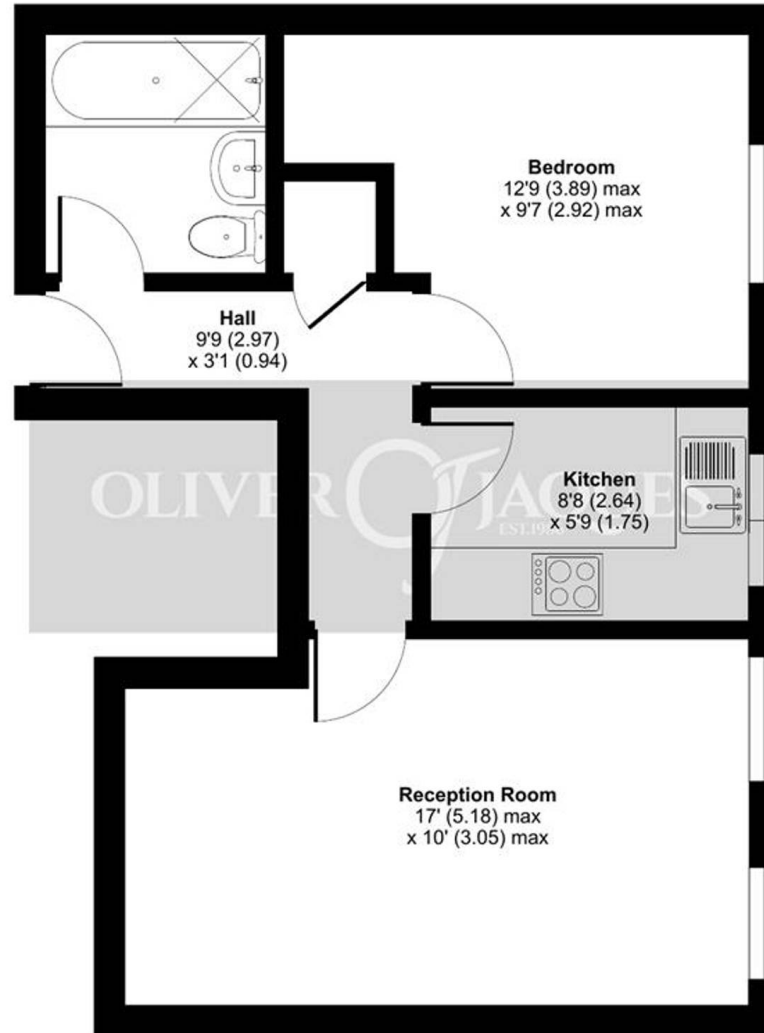




Leroy Street, London, SE1

Approximate Area = 431 sq ft / 40 sq m

For identification only - Not to scale



SECOND FLOOR



Floor plan produced in accordance with RICS Property Measurement Standards incorporating International Property Measurement Standards (IPMS2 Residential). © nichecom 2024. Produced for Oliver Jaques. REF: 1137996



Oliver Jaques

Oliver Jaques, 229-231 Lower Road - SE16 2LW

02072315050 • southeast@o-j.co.uk • o-j.co.uk/

Every care has been taken with the preparation of this brochure but it is for general guidance and complete accuracy can't be guaranteed. Prospective purchasers should seek clarification from their solicitor. The mention of any appliances fixtures or fittings does not imply they are in working order.