



138 Adams Gardens Estate, London  
London

£450,000

OLIVER *OJ* JAQUES  
EST. 1986

# 138 Adams Gardens Estate

London, London

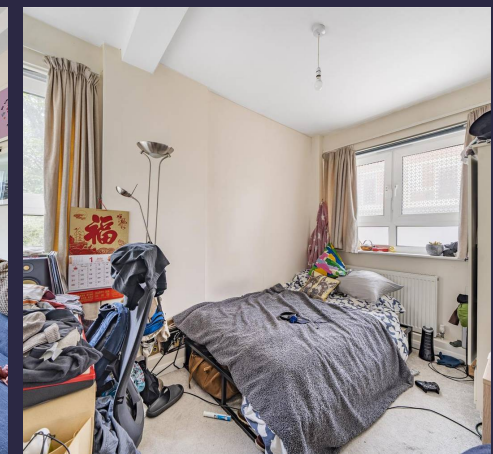
Tucked into the old cobbled streets of Rotherhithe's historic village centre, the 1950's built Adams Gardens Estate enjoys a peaceful charm rarely found in the city. Council Tax band: C

Tenure: Leasehold

EPC Energy Efficiency Rating: C

EPC Environmental Impact Rating: C

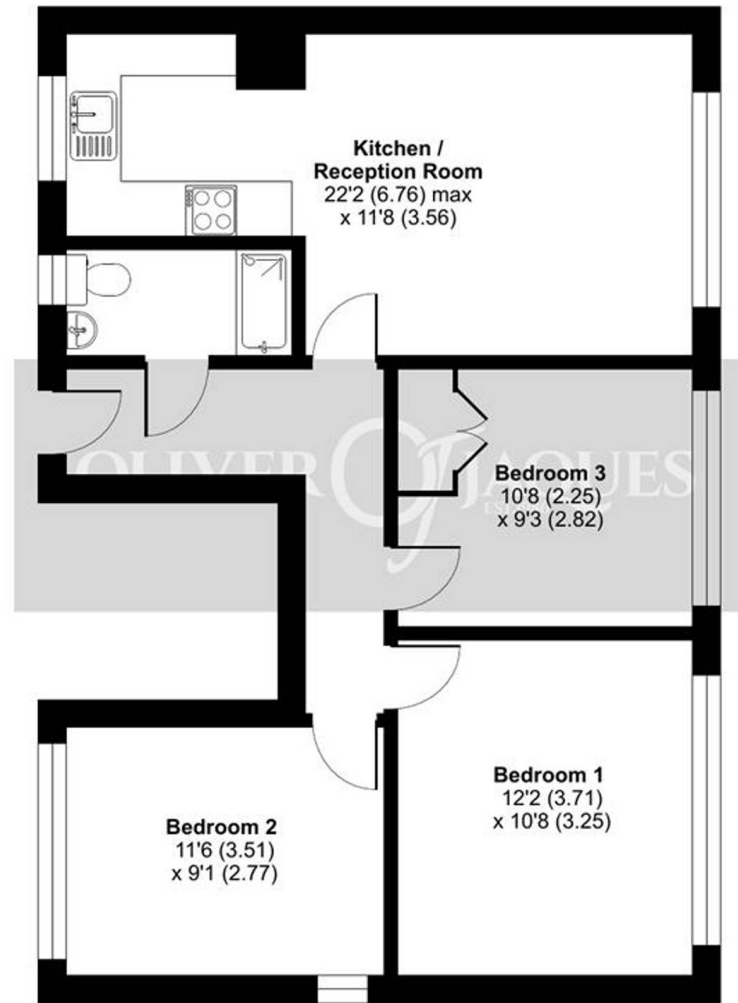
- Historic Rotherhithe Location
- 0.1m to Rotherhithe Station
- Three Double Bedrooms
- 0.2m to Canada Water Station
- Double Glazed, Gas Central Heating
- First Floor Apartment
  
- Tenure : Leasehold
- Lease Expires : 25/06/2119
- Ground Rent : £10 pa
- Service Charge : £1,964.88 pa



# Adams Gardens Estate, London, SE16

Approximate Area = 695 sq ft / 64.6 sq m

For identification only - Not to scale



FIRST FLOOR



Floor plan produced in accordance with RICS Property Measurement Standards incorporating International Property Measurement Standards (IPMS2 Residential). © nichecom 2024. Produced for Oliver Jaques. REF: 1119216



## Oliver Jaques

Oliver Jaques, 229-231 Lower Road - SE16 2LW

02072315050 • southeast@o-j.co.uk • o-j.co.uk/

Every care has been taken with the preparation of this brochure but it is for general guidance and complete accuracy can't be guaranteed. Prospective purchasers should seek clarification from their solicitor. The mention of any appliances fixtures or fittings does not imply they are in working order.