



10 Dreadnought Court 247 Lower

£2,000 PCM **Arrow Above**

INDECON
APPROVED BY
MAYOR OF LONDON

asra
APARTMENTS

COMING SOON
Shared Ownership
Apartments
0203 394 0078

OLIVER T JAQUES
EST.1986



10 Dreadnought Court 247 Lower Road, Surrey Quays

Situated conveniently just 175yds from Surrey Quays station offering London Overground services, as well as nearby Canada Water for Jubilee Line services, this stunning two bedroom, second floor apartment enjoys a communal rooftop terrace for residents, private balcony and all mod cons.

This property is packed with contemporary fixtures and fittings and boasts two double bedrooms, a modern three piece tiled bathroom suite with power shower and an abundance of storage space in its large cupboards. Further benefits include gas central heating, video entry phone system, bike storage and a plethora of day and night bus routes on the adjacent A200. Available to rent from early August on a furnished basis.

- Two Bedroom Apartment
- Roof Terrace
- £2,307 Deposit Amount
- Close to Transport Links
- Private Balcony
- EPC Rating B
- Council Tax Band C
- Close to Amenities

Oliver Jaques Surrey Quays Lettings
020 7231 5050

Email southeast@o-j.co.uk

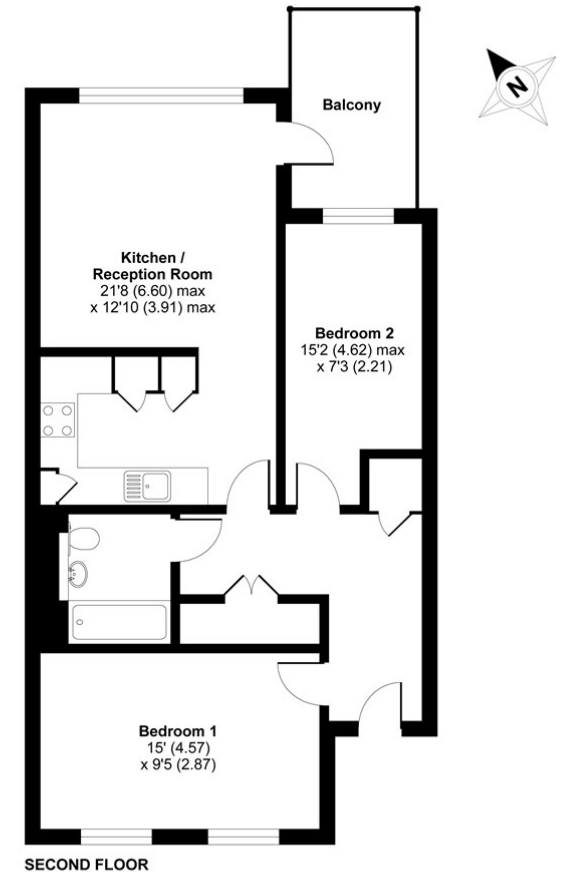
229/231 Lower Road, Surrey Quays, London, SE16 2LW

web <https://www.o-j.co.uk>

Every care has been taken with the preparation of this brochure but it is for general guidance only and complete accuracy cannot be guaranteed. If there is any point, which is of importance professional verification should be sought. This brochure does not constitute a contract or part of a contract. We are not qualified to verify tenure of property. Prospective purchasers should seek clarification from their solicitor or verify the tenure of this property for themselves by visiting www.gov.uk/government/organisations/land-registry. The mention of any appliances, fixtures or fittings does not imply they are in full working order. Photographs are reproduced for general information and it cannot be inferred that any item shown is included in the sale. All dimensions are approximate. Walking times are taken from Google Maps and measured from the centre of the postcode, which may differ from the individual property. We always refer prospective buyers to our panelled conveyancers and Chancery Mortgage Services Ltd. It is your decision whether to use them. Should you decide to do so you should know that we could receive a referral fee from them for recommending them to you.

Dreadnought Court, Lower Road, Surrey Quays, London, SE8

APPROX. GROSS INTERNAL FLOOR AREA 719 SQ FT 66.7 SQ METRES



Whilst every attempt has been made to ensure the accuracy of the floor plan contained here, measurements of doors, windows and rooms are approximate and no responsibility is taken for any error, omission or misstatement. These plans are for representation purposes only as defined by RICS Code of Measuring Practice and should be used as such by any prospective purchaser. Specifically no guarantee is given on the total square footage of the property if quoted on this plan. Any figure given is for initial guidance only and should not be relied on as a basis of valuation.

Copyright nichecom.co.uk 2015 Produced for Oliver Jaques REF : 57569

