



1 Varcoe Road, London

Asking Price £295,000 Leasehold

OLIVER *OJ* JAUQUES
EST.1986



1 Varcoe Road, London

Ideal for the commuting homeowner, this naturally bright one bedroomed apartment, presented in a high decorative order, can have you from the platform of London Bridge station to your own front door in just 11 minutes. Located on a quiet side street which is just a 7 minute walk from South Bermondsey station (offering 4 minute journeys to London Bridge), this location is expected to experience an above average appreciation in coming years, by riding on the coat tails of the Surrey Canal Triangle development and Bermondsey Works. The development includes a communal workroom which is an ideal space to work from home away from the apartment, a sunroom, a top floor (7th) roof terrace, as well as another terrace on the 6th-floor, and a bike room with ample spaces.

Eligibility Criteria: This home is currently available to applicants who:

*Live and/or work in the London Borough of Southwark (this applies only for the first 3 months of sale, after which it opens up to anyone living or working in London)

*Have a household income of under £90,000.

*Do not currently own any property

- One Double Bedroom
- High Decorative Order
- Close To Transport Links
- Communal Roof Terrace
- Secure Bike Storage Room
- First Floor Apartment

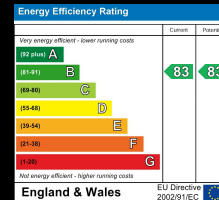
Oliver Jaques Surrey Quays Sales
0207 231 5050

Email southeast@o-j.co.uk

229/331 Lower Road, Surrey Quay, London, SE16 2LW

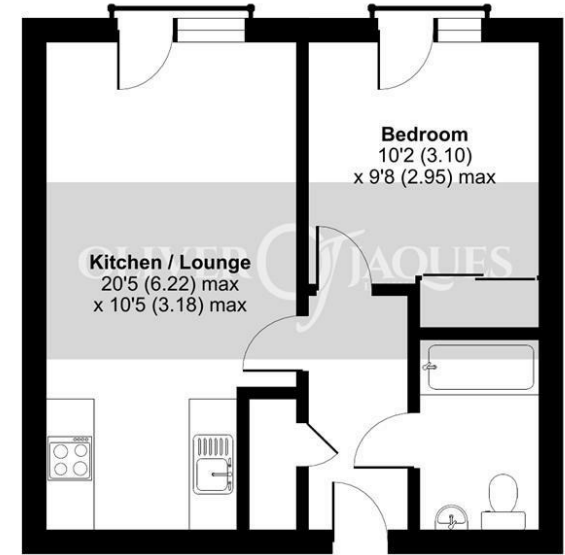
web <https://www.o-j.co.uk>

Every care has been taken with the preparation of this brochure but it is for general guidance only and complete accuracy cannot be guaranteed. If there is any point, which is of importance professional verification should be sought. This brochure does not constitute a contact or part of a contract. We are not qualified to verify tenure of property. Prospective purchasers should seek clarification from their solicitor or verify the tenure of this property for themselves by visiting www.gov.uk/government/organisations/land-registry. The mention of any appliances, fixtures or fittings does not imply they are in full working order. Photographs are reproduced for general information and it cannot be inferred that any item shown is included in the sale. All dimensions are approximate. Walking times are taken from Google Maps and measured from the centre of the postcode, which may differ from the individual property. We routinely refer clients to Chancery Mortgage Services Ltd. It is your decision whether you choose to deal with Chancery Mortgage Services Ltd. In making that decision, you should know that we receive an annual payment benefits from Chancery Mortgage Services Ltd, equating to approximately £220 per referral



Varcoe Road, London, SE16

Approximate Area = 423 sq ft / 39.3 sq m
For identification only - Not to scale



FIRST FLOOR

Floor plan produced in accordance with RICS Property Measurement Standards incorporating International Property Measurement Standards (IPMS2 Residential). © rnichecom 2024. Produced for Oliver Jaques. REF: 1139349

Tenure: Leasehold
Ground Rent: £350 pa
Service Charge: £2,273.81 pa
Lease Expires: 25/11/2144
Shared Ownership: No
Council Tax Band: Southwark London Borough Council (Band C)
 £1,593.76