



Southwark Park Road, Rotherhithe

Asking Price £425,000 Leasehold

OLIVER  JAUQUES
EST.1986



Southwark Park Road, Rotherhithe

A beautifully presented, apartment forming part of a 1950s period development, moments from the River Thames and the Jubilee Line at Bermondsey station. Tucked into the side of Southwark Park with its own park entrance, the development enjoys the large windows and brick elevations associated with properties of this age. Briefly comprising two double bedrooms, naturally bright west facing reception room, modern bathroom, fitted kitchen and wood flooring throughout. To the front is an enclosed patio area for use on those summer days. Ideal as a starter home or for a young family, the property is within the catchment of the 'Outstanding' Riverside primary school. Further facilities within easy walking distance include Shad Thames, Rotherhithe's Overground Line and the shopping & leisure parks of Canada Water.

- 450m Walk to Bermondsey Station
- 1950s Period Property
- Double Glazed and Gas Central Heating
- Two Double Bedrooms
- High Decorative Order Throughout
- Triple Aspect Property

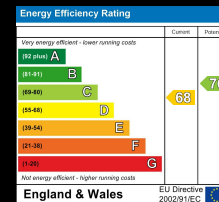
Oliver Jaques Surrey Quays Sales
0207 231 5050

Email southeast@o-j.co.uk

229/331 Lower Road, Surrey Quay, London, SE16 2LW

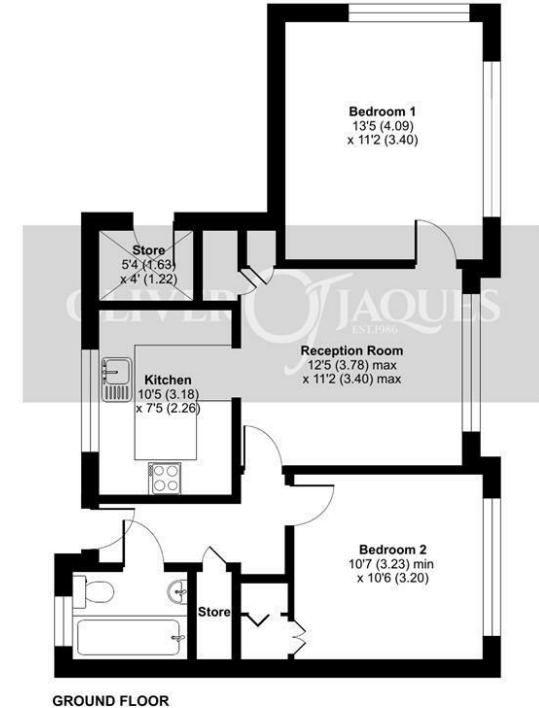
web <https://www.o-j.co.uk>

Every care has been taken with the preparation of this brochure but it is for general guidance only and complete accuracy cannot be guaranteed. If there is any point, which is of importance professional verification should be sought. This brochure does not constitute a contact or part of a contract. We are not qualified to verify tenure of property. Prospective purchasers should seek clarification from their solicitor or verify the tenure of this property for themselves by visiting www.gov.uk/government/organisations/land-registry. The mention of any appliances, fixtures or fittings does not imply they are in full working order. Photographs are reproduced for general information and it cannot be inferred that any item shown is included in the sale. All dimensions are approximate. Walking times are taken from Google Maps and measured from the centre of the postcode, which may differ from the individual property. We routinely refer clients to Chancery Mortgage Services Ltd. It is your decision whether you choose to deal with Chancery Mortgage Services Ltd. In making that decision, you should know that we receive an annual payment benefits from Chancery Mortgage



Southwark Park Road, London, SE16

Approximate Area = 652 sq ft / 60.5 sq m
For identification only - Not to scale



Floor plan produced in accordance with RICS Property Measurement Standards incorporating International Property Measurement Standards (IPMS2 Residential). © rnichecom 2023. Produced for Oliver Jaques. REF: 1001370

Tenure: Leasehold

Ground Rent: £10 pa

Fixed

Service Charge: £1,100 pa

Lease Expires: 4th September 2130

Shared Ownership: No

Council Tax Band: Southwark London Borough

Council (Band B)

£1,316.72 pa