



Rainbow Quay, Surrey Quays

Asking Price £450,000 Leasehold - Share of Freehold

OLIVER *OJ* JAQUES
EST.1986



Rainbow Quay, Surrey Quays

A generously proportioned second floor apartment forming part of the popular quayside Rainbow Quay. Enjoying a scenic balcony sitting directly above the edge of the water, this peaceful property offers a real taste of Docklands life to the market. Internally, the 53.4sqm (575sqft) apartment accommodates a spacious open plan kitchen/reception room with an abundance of natural light leading to the balcony where you can enjoy the stunning sunsets looking down the dock, an en suite master bedroom with fitted wardrobes. Rainbow Quay are very proud of their well used, immaculate communal gardens with benches and BBQ pits which are free to use to all residents, there is also secure allocated parking beneath the building.

- One Bedroom Second Floor Apartment
- Triple Aspect Windows
- Two Communal Gardens
- Private Balcony
- Stunning Views
- Secure Underground Parking

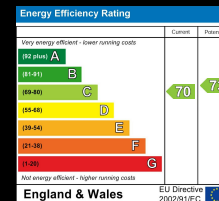
Oliver Jaques Surrey Quays Sales
0207 231 5050

Email southeast@o-j.co.uk

229/331 Lower Road, Surrey Quay, London, SE16 2LW

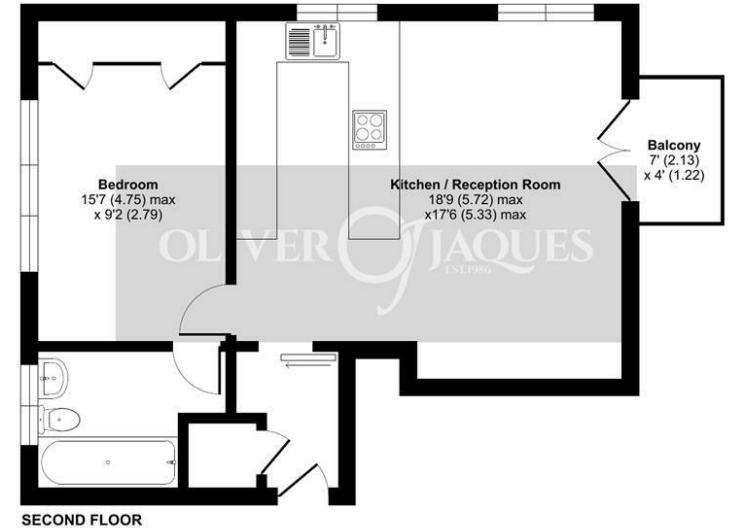
web <https://www.o-j.co.uk>

Every care has been taken with the preparation of this brochure but it is for general guidance only and complete accuracy cannot be guaranteed. If there is any point, which is of importance professional verification should be sought. This brochure does not constitute a contract or part of a contract. We are not qualified to verify tenure of property. Prospective purchasers should seek clarification from their solicitor or verify the tenure of this property for themselves by visiting www.gov.uk/government/organisations/land-registry. The mention of any appliances, fixtures or fittings does not imply they are in full working order. Photographs are reproduced for general information and it cannot be inferred that any item shown is included in the sale. All dimensions are approximate. Walking times are taken from Google Maps and measured from the centre of the postcode, which may differ from the individual property. We routinely refer clients to Chancery Mortgage Services Ltd. It is your decision whether you choose to deal with Chancery Mortgage Services Ltd. In making that decision, you should know that we receive an annual payment benefits from Chancery Mortgage Services Ltd, equating to approximately £220 per referral.



Rainbow Quay, London, SE16

Approximate Area = 570 sq ft / 52.9 sq m
For identification only - Not to scale



SECOND FLOOR

Floor plan produced in accordance with RICS Property Measurement Standards incorporating International Property Measurement Standards (IPMS2 Residential). © nrichecom 2024. Produced for Oliver Jaques. REF: 1146516

Tenure: Leasehold - Share of Freehold

Ground Rent: N/A

Service Charge: £2,100 pa

Lease Expires: 18/02/3023

Shared Ownership: No

Council Tax Band: Southwark London Borough Council (Band D)

£1,792.98 pa